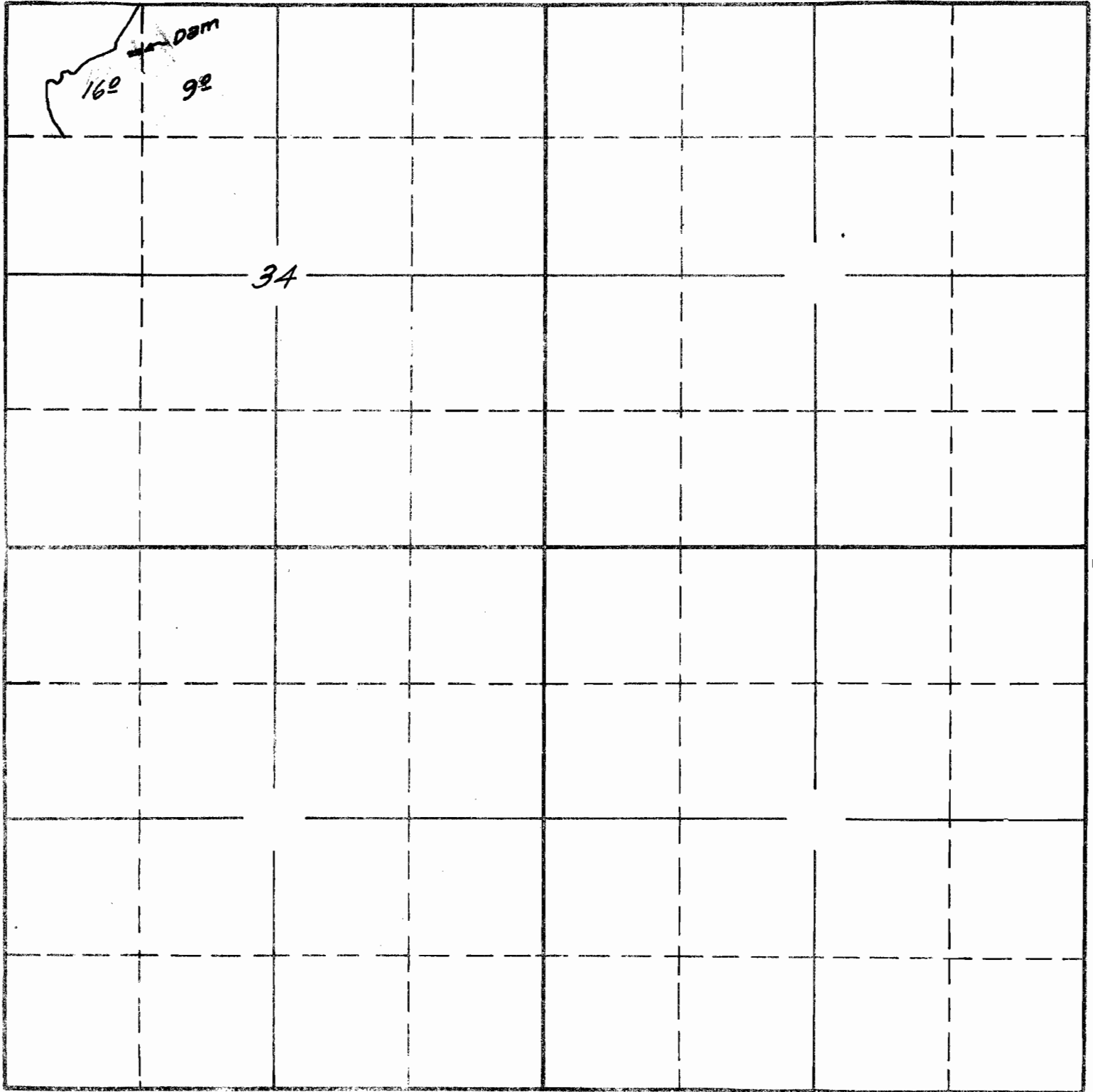


SECTION

TOWNSHIP 7S, RANGE 39E, W. M.

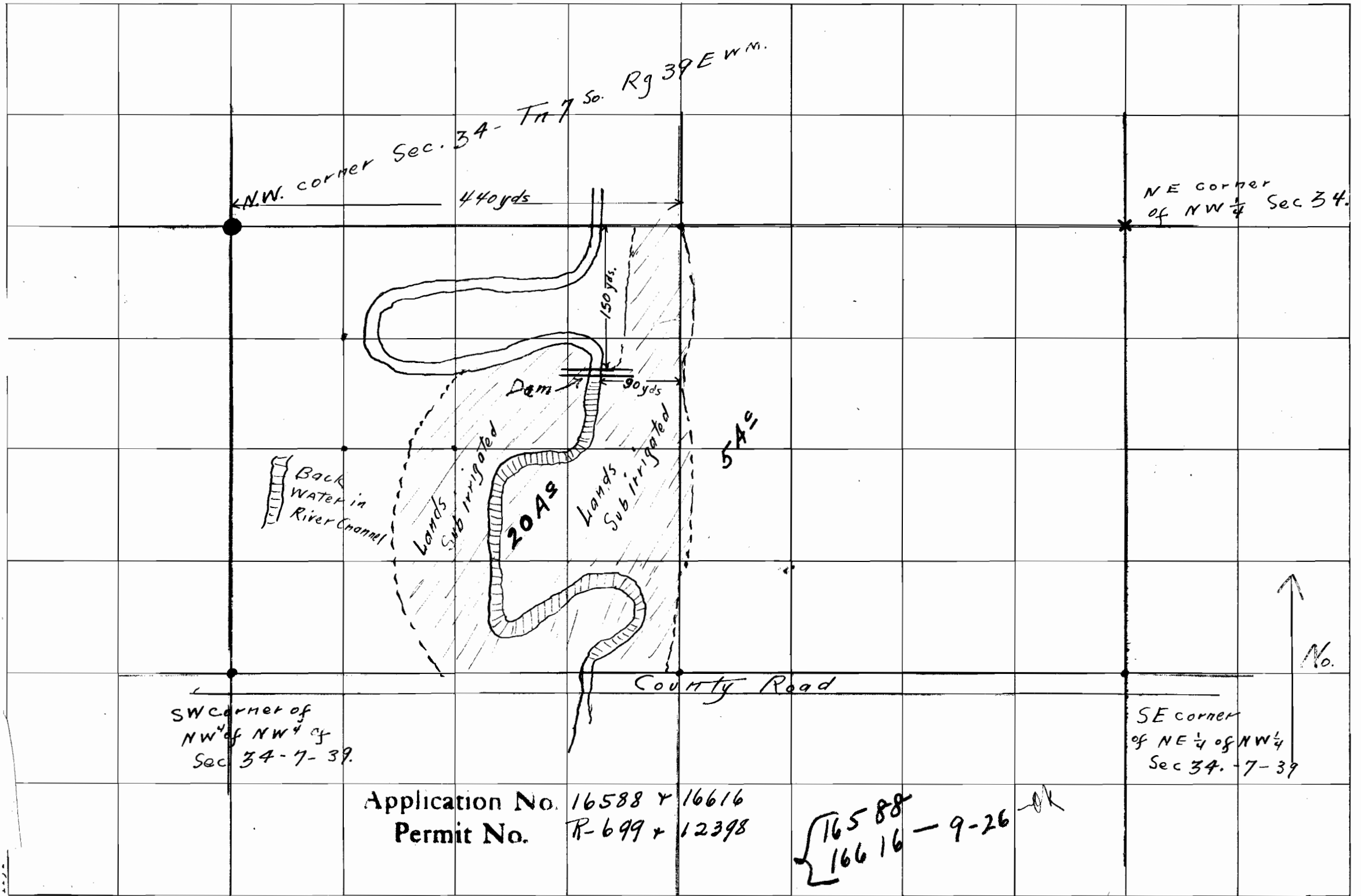
North



Surveyed Sept 29 1940
by C.A.C.

South

APPLICATION No. ¹⁶⁶¹⁶ R-16588
PERMIT No. 12398
R-699



N.W. corner Sec. 34 - Tn 7 So. R9 39E W.M.
 440 yds

NE corner of NW 1/4 Sec 34.

Back Water in River Channel

Lands Sub Irrigated

20 AS

Lands Sub Irrigated

5 AS

County Road

SW corner of NW 1/4 of NW 1/4 of Sec 34-7-39.

SE corner of NE 1/4 of NW 1/4 Sec 34-7-39

No. ↑

Application No. 16588 + 16616
 Permit No. R-699 + 12398

{ 16588 - 9-26 - OK
 16616