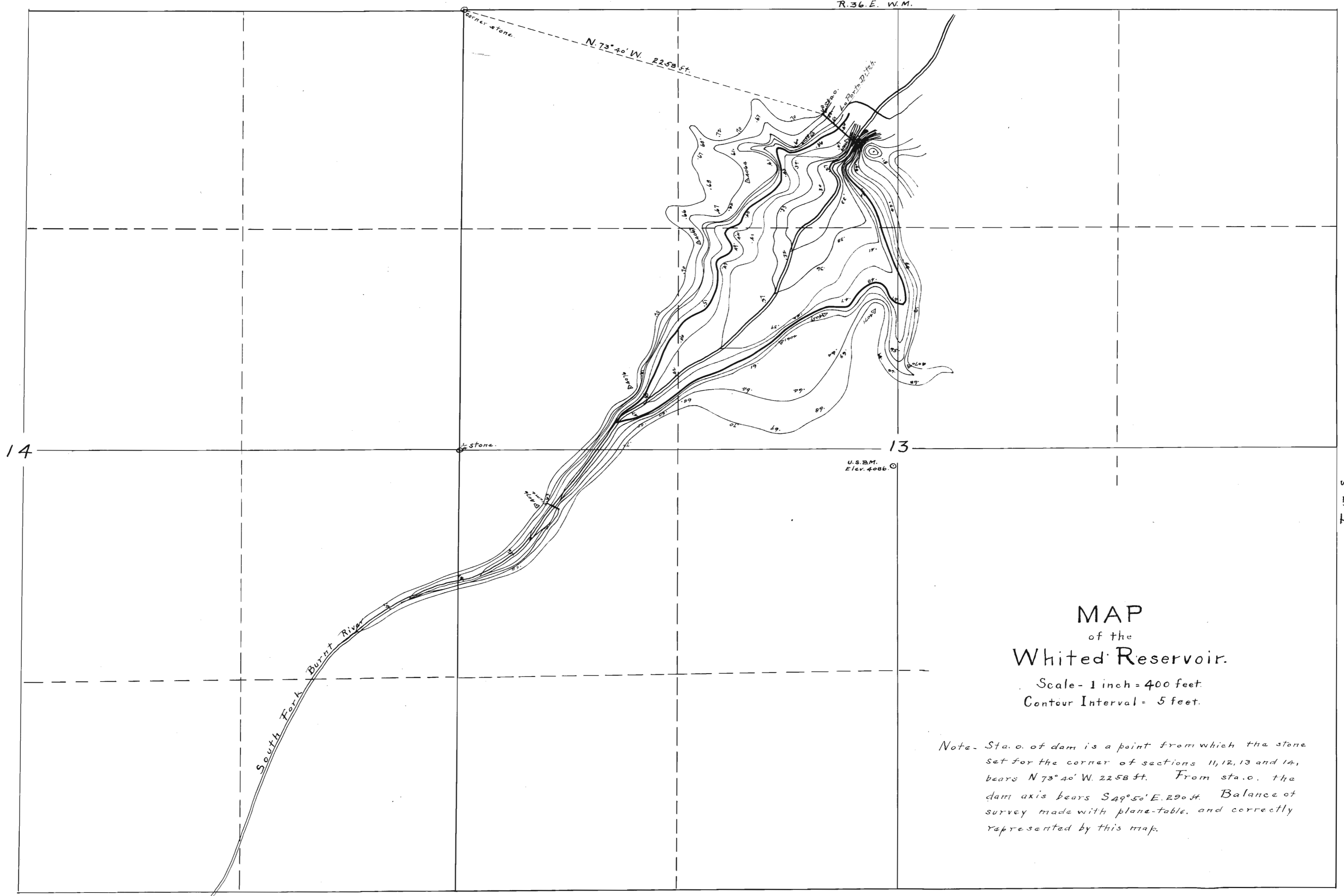


5657  
3738

**MAP**  
showing  
**LANDS**  
to be  
**IRRIGATED**  
from the  
**Whited Reservoir.**  
Scale - 2 inches = 1 mile.

Statement - v indicates the lands to be irrigated. The water stored by Whited Reservoir is to be released into the natural channel of the South Fork Burnt River and used as an auxiliary supply for the Tiger and Currop Ditches, which ditches are a matter of record and location of which is approximately shown on this map.

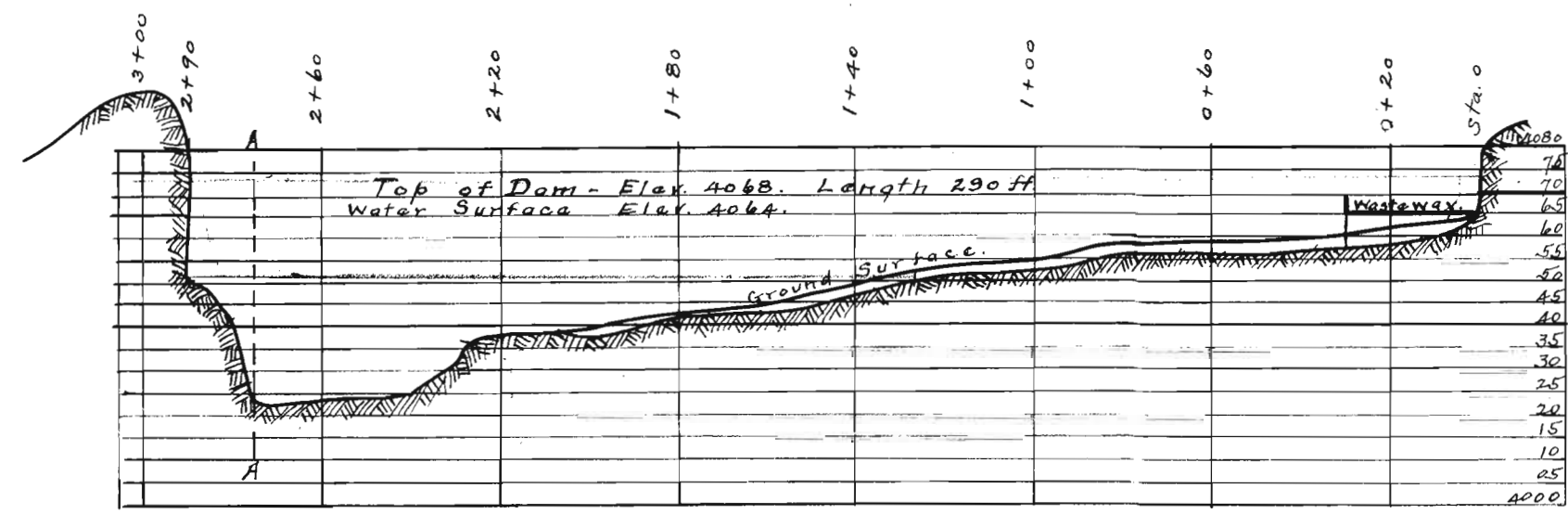
N = New rights  
S = Supplemental Supply



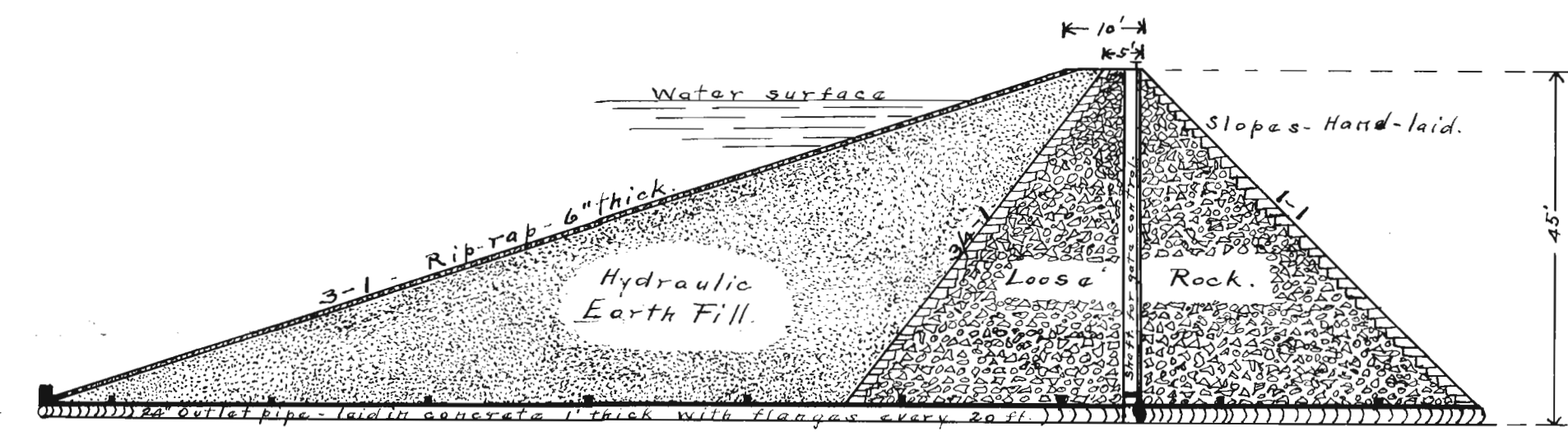
**MAP**  
of the  
**Whited Reservoir.**  
Scale - 1 inch = 400 feet  
Contour Interval - 5 feet.

Note. Sta. 0 of dam is a point from which the stone set for the corner of sections 11, 12, 13 and 14, bears N 73° 40' W. 2258 ft. From sta. 0, the dam axis bears S 49° 50' E. 290 ft. Balance of survey made with plane-table, and correctly represented by this map.

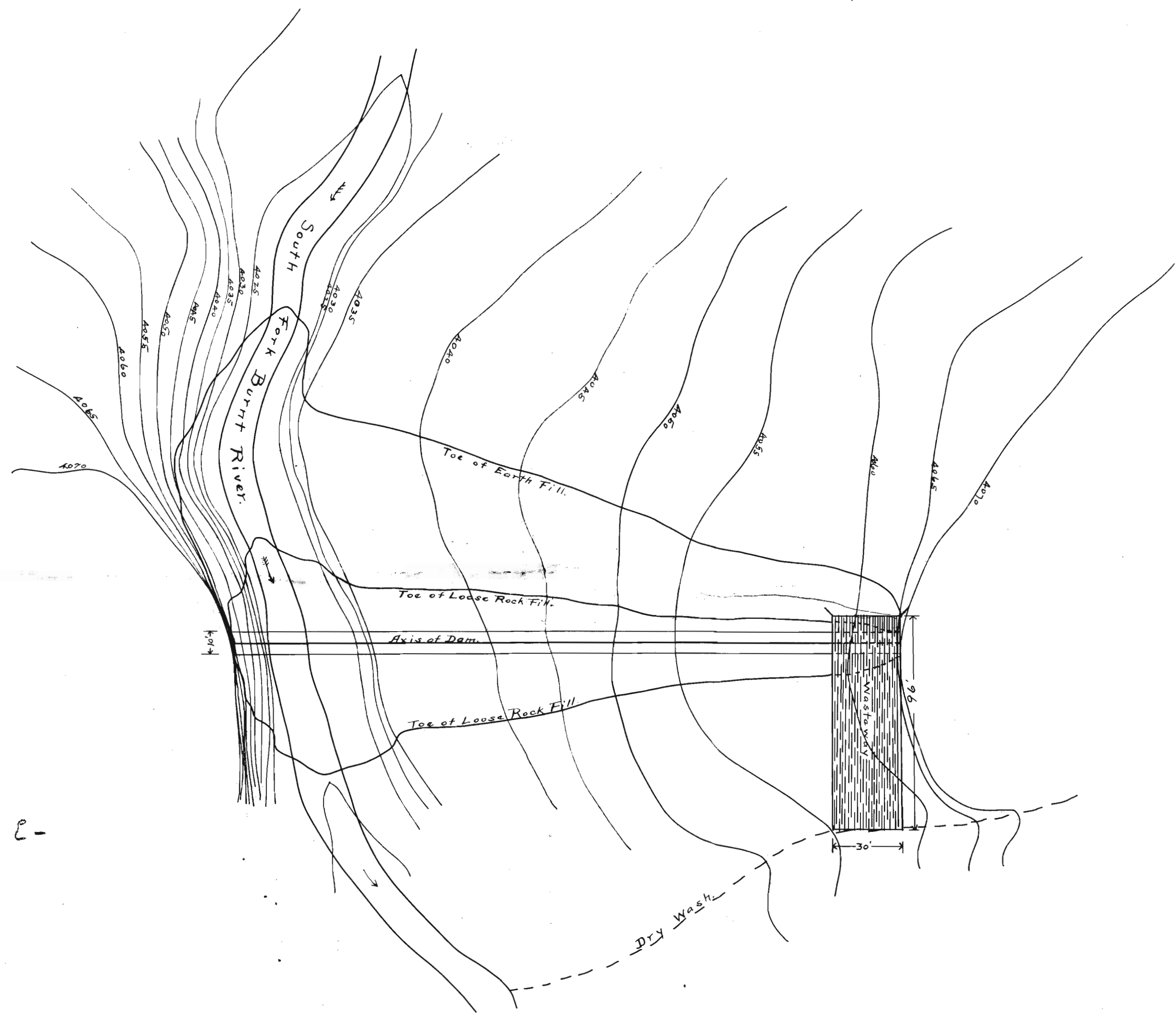
Application No. 993  
Reservoir Permit No. 72



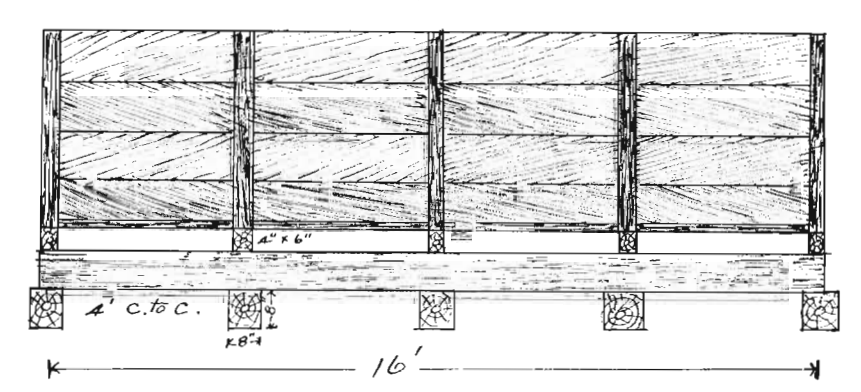
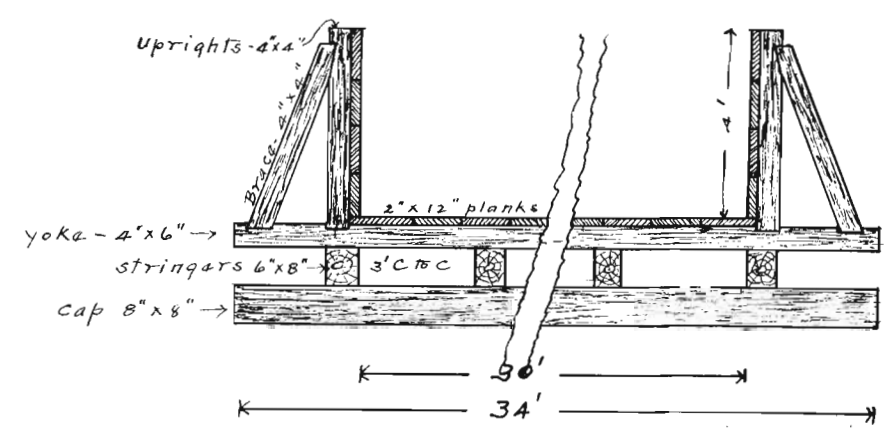
Profile of Dam Site.  
Scale 1 in. = 40 ft.



Cross-Section of Dam at A-A.  
Scale 1" = 20'

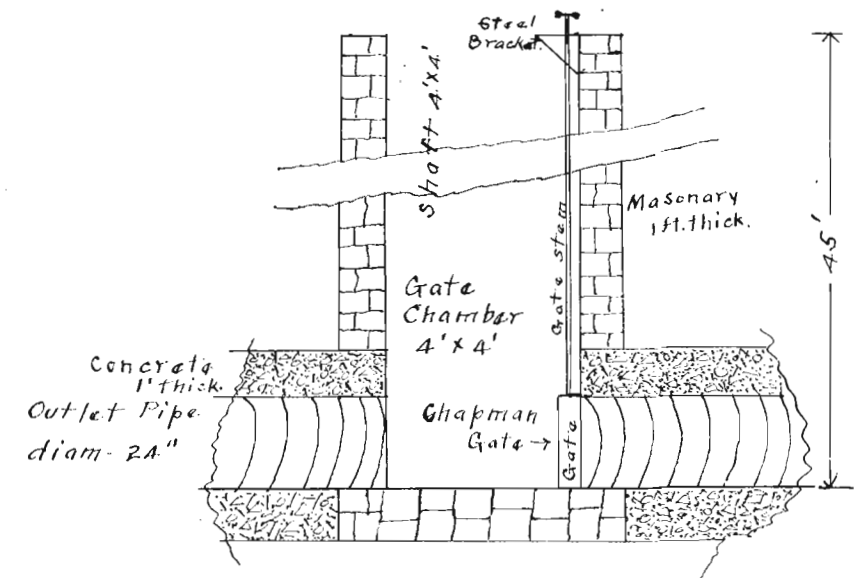


Plan of Dam  
Scale 1 in. = 40 ft.



Note - Panels #1, thro' dam to be level. Panels #2-6 to have - fall of 1 ft. in 10 ft.

Detail of Wasteway.  
Scale - 1" = 4'



Detail of Control Works.  
Scale 1" = 4'

I, W.W. Atwater, of Baker, Ore., do hereby certify that this map (sheets 1-3) was made from notes taken during an actual survey made by me on Oct. 10-11, 1910, and that it correctly represents the works described on the accompanying application together with the location of streams and other ditches in the immediate vicinity and has written thereon the area in each smallest legal subdivision which it is proposed to irrigate.

W.W. Atwater  
Surveyor.

Application No. 993  
Reservoir Permit No. 72

See 15-135-36 E-

412