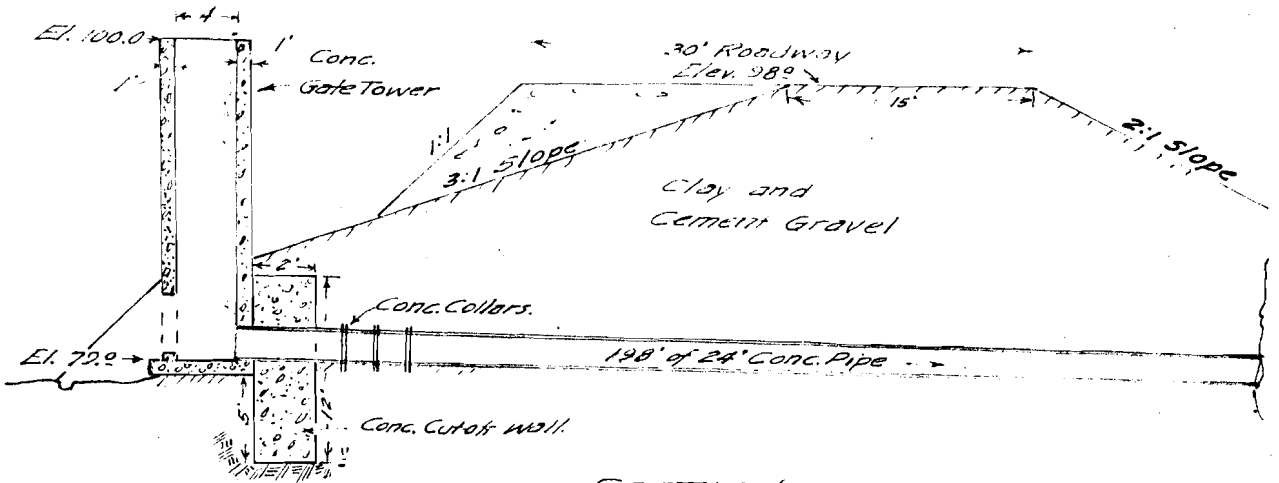
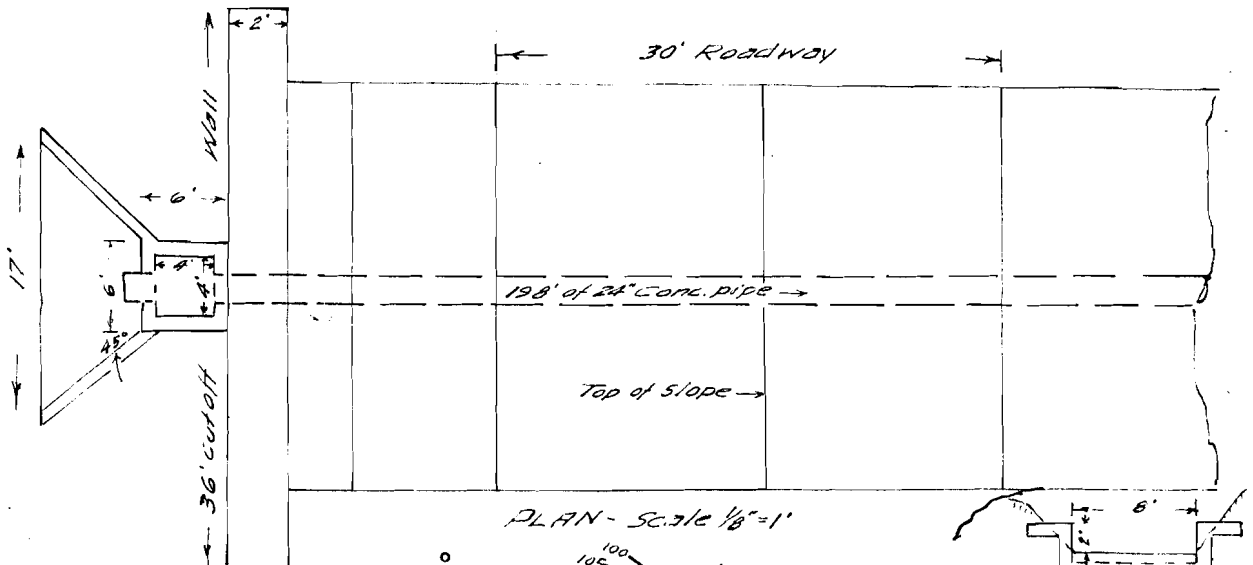


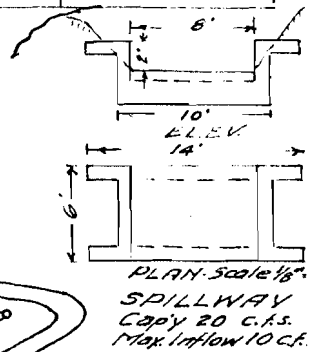
H.B. Holzhauser, Reservoir Application
 Scale as shown. April 1953



SECTION
 Scale 1/8" = 1'

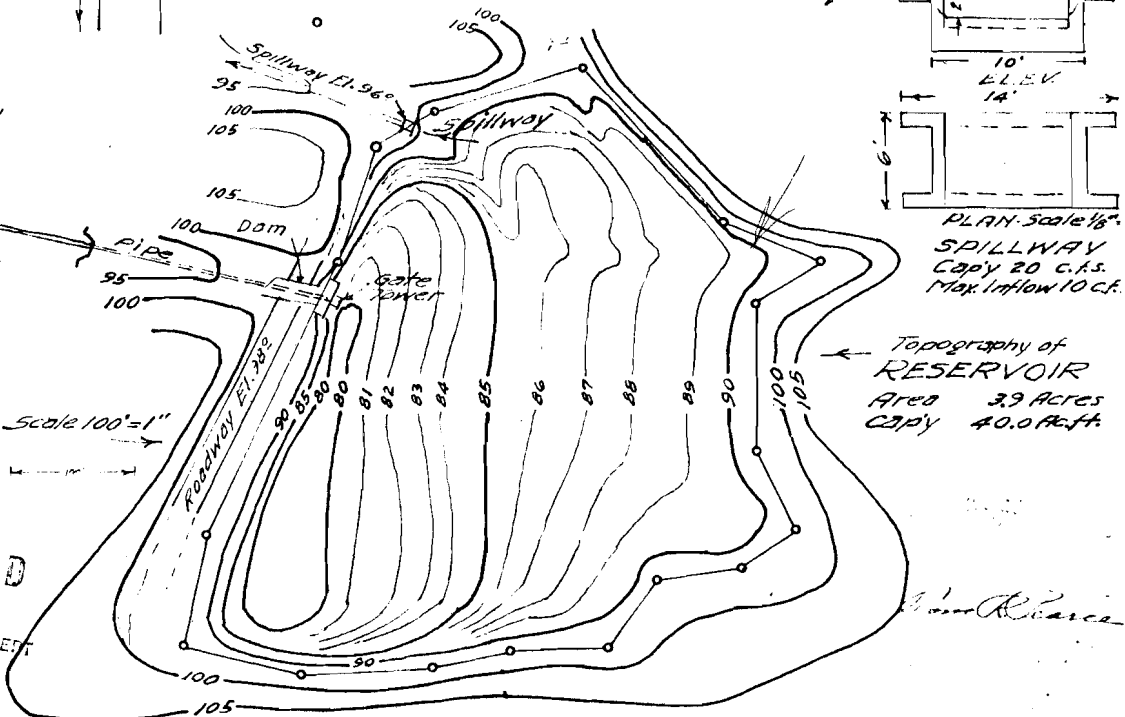


PLAN - Scale 1/8" = 1'



PLAN - Scale 1/8"
 SPILLWAY
 Cap'y 20 c.f.s.
 Max. Inflow 10 c.f.

Application No. 57062
 Permit No.



Topography of
 RESERVOIR
 Area 3.9 Acres
 Cap'y 40.0 A.C.F.

RECEIVED
 JUL 15 1977
 WATER RESOURCES DEPT
 SALEM, OREGON

Wm. R. Carver