

BLACK OAK
DUANE CULBERTSON
MANAGER

RECEIVED

FEB 17 1982

WATER RESOURCES DEPT
SALEM, OREGON

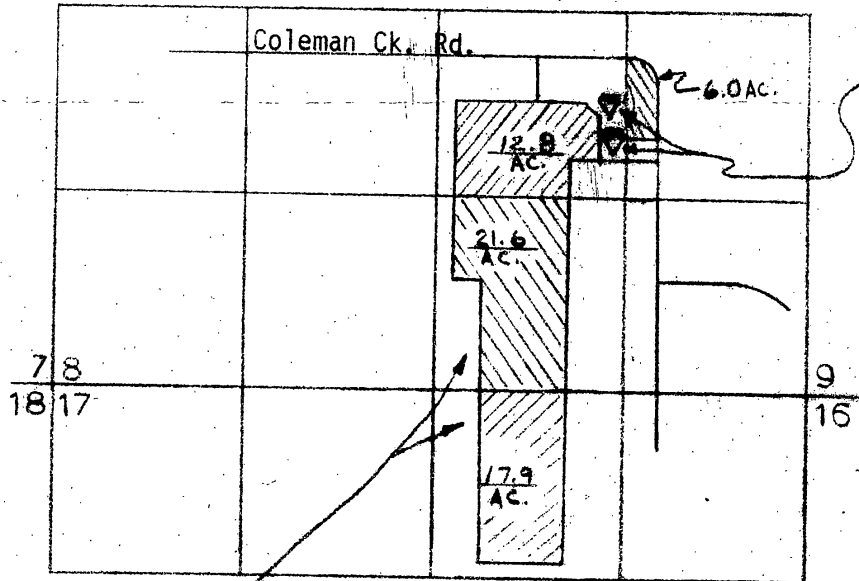
Application No.
Permit No.

R-63267 &
63268

Superseded
6/10/82

R.1W.

N



APPROX.
RESERVOIR
LOCATIONS

PROPOSED
COMBINED
CAPACITY
15.0 Ac.Ft.

T.38 S.

58.3 Ac.-total area covered
by frost control

RECEIVED

JUN 10 1982

WATER RESOURCES DEPT
SALEM, OREGON

Scale 4" = 1 Mile

NOTE:

North Pond Coordinates- 2150'N 1400'W of SE corner Sec. 8

South Pond Coordinates- 1700'N 1550'W of SE corner Sec. 8

1/82, J. F. Jones, USDA, SCS