

Points of Diverson

POD #4 Sump/Res #4 is 906' N 2274' W from SE cor of NW 1/4 NE 1/4 being w/in NE 1/4 NW 1/4 Sec 18  
 POD #2 Res #2 is 1166' N 1856' W " " " " NE 1/4 NW 1/4 Sec 18  
 POD #5 [Res #5 Crooked Cr] is 1707' N 264' E " " " " SE 1/4 SE 1/4 Sec 7  
 POD #6 Res #6 is 922' N 140' E " " " " NE 1/4 NE 1/4 Sec 18  
 POD #7 Res #7 is 656' N 563' E " " " " NW 1/4 NE 1/4 Sec 18

Boq Acreage by 1/4 1/4 section

SE 1/4 SW 1/4, Sec 7:

1-8 = 11.5 Ac

5, 6 = 2.25 Ac  
 NE 1/4 NW 1/4, Sec 18:

9 = 3.2 Ac

10, 11, 12 = 5.5 Ac

NW 1/4 NE 1/4, Sec 18:

13, 14, 15(P) = 6.6 Ac

17, 18, 19, 22 = 6.6 Ac

20 = 0.2 Ac

21(P) = 0.1 Ac

23, 24 = 3.7 Ac

27(P) = 1.0 Ac

NE 1/4 NE 1/4, Sec 18

15(P) = 0.5 Ac

16A = 3.6 Ac

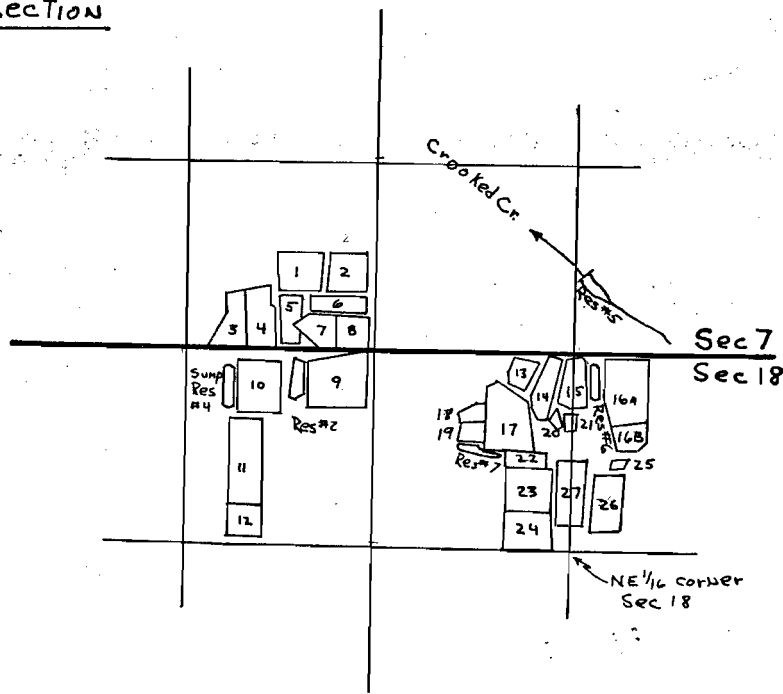
16B = 1.5 Ac

21(P) = 0.2 Ac

25 = 0.5 Ac

26 = 1.5 Ac

27(P) = 2.3 Ac



T29S R14W



Note: (P) after a bog number signifies "partial" bog acreage. The bog is divided by a 1/4 1/4 section line and only the bog's acreage for a particular 1/4 1/4 section is listed under that 1/4 1/4 section.

RECEIVED  
 APR 27 1982

Boq #	POD #	Source	USE
1-8	5	Crooked Cr	HC
1-8	5	Res #5	IS, TCS
5, 6	2	Res #2	IS, TCS
9	5	Crooked Cr	HC
10, 11, 12	5	Crooked Cr	I, TC, FH
10, 11, 12	4	Sump/Res #4	IS, TCS
9, 10, 11, 12	5	Res #5	IS, TCS
13, 14, 15(P)	5	Crooked Cr	HC
17, 18, 19, 22	5	Res #5	IS, TCS
13, 14, 15(P)	5	Res #5	IS, TCS
17, 18, 19, 22	5	Res #5	IS, TCS
20	5	Crooked Cr	HC
20	5	Res #5	IS, TCS
21(P)	5	Crooked Cr	I, TC, FH
21(P)	5	Res #5	IS, TCS
21(P)	7	Res #7	IS, TCS
23, 24	5	Crooked Cr	HC
23, 24	5	Res #5	IS, TCS
27(P)	5	Crooked Cr	I, TC, FH
27(P)	5	Res #5	IS, TCS

WATER RESOURCES DEPT  
 OREGON

Boq #	POD #	Source	Use
15(P)	5	Crooked Cr	HC
15(P)	5	Res #5	IS, TCS
16A	5	Crooked Cr	HC
16A	5	Res #5	IS, TCS
16B	5	Crooked Cr	I, TC, FH
16B	5	Res #5	IS, TCS
16B	6	Res #6	IS, TCS
	5	Res #5	IS, TCS
21(P)	7	Res #7	IS, TCS
25	5	Crooked Cr	I, TC, FH
25	5	Res #5	IS, TCS
25	6	Res #6	IS, TCS
26	5	Crooked Cr	HC
		Res #5	IS, TCS
27(P)	5	Crooked Cr	I, TC, FH
27(P)	5	Res #5	IS, TCS

Abbreviations

I = Irrigation  
 IS = Supp. irrigation  
 TC = temperature control  
 TCS = Supp temp control  
 FH = flood harvest  
 FHS = supp flood harvest  
 HC = heat control

JUL 8 - 1982  
 WATER RESOURCES DEPT  
 SALEM, OREGON

RECEIVED