

Section 29 T2N R3W W.M.

SCALE 1" = 400'
Section 28 T2N R3W W.M.

RECEIVED

AUG 12 1982

WATER RESOURCES DEPT.
SALEM, OREGON

Application No. R-63446 & R 8494
Permit No. 63447

46979

RECEIVED

JUN 23 1982

WATER RESOURCES DEPT
SALEM, OREGON

RECEIVED

APR 2 1982

WATER RESOURCES DEPT
SALEM, OREGON

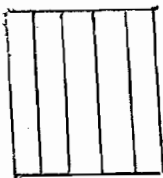
RECEIVED

SEP 13 1982

WATER RESOURCES DEPT
SALEM, OREGON

NE 1/4 of Sect 29

SE 1/4 of Sect 29



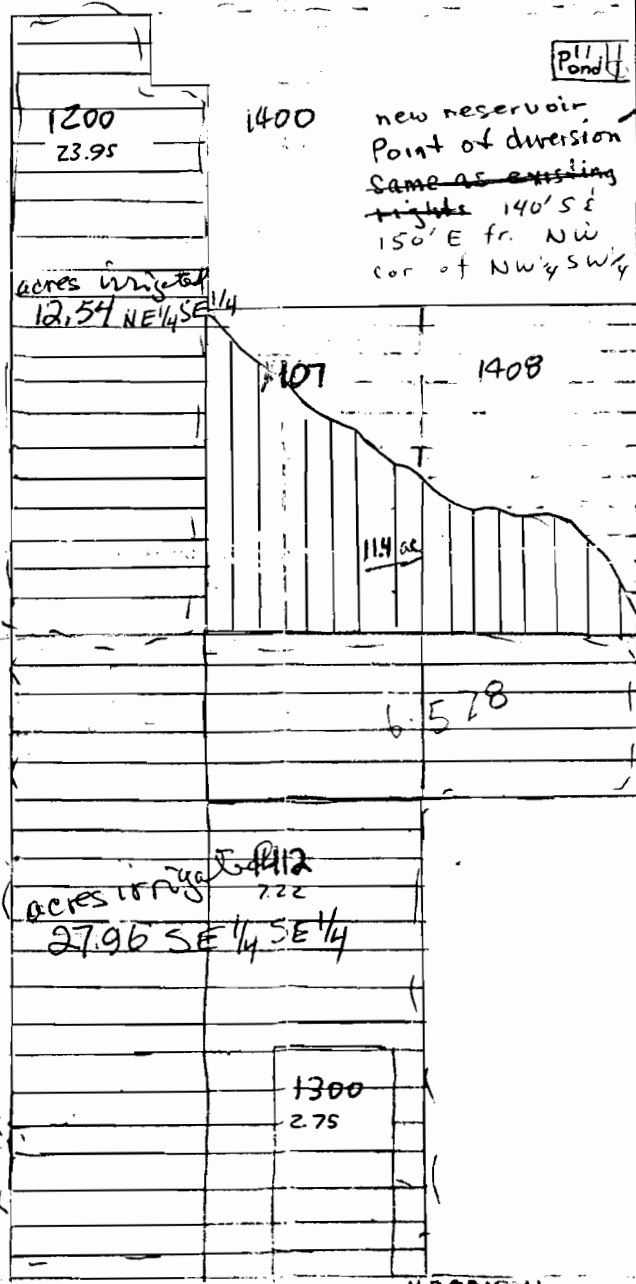
EXISTING RIGHTS = 11.4 AC.



NEW RIGHTS

APPLYING FOR:

12.54
17.06 acres
5.45 acres
58.45



new reservoir
Point of diversion
Same as existing
right 140' S &
150' E fr. NW
cor of NW 1/4 SW 1/4

SW 1/4 & NW 1/4 = 5.82 acres

acres irrigated
8.62 NW 1/4 SW 1/4

NW 1/4 & SW 1/4 = 27.14 ac.

NE 1/4 of SE 1/4 = 12.54 ac

SE 1/4 of SE 1/4 = 29.96 ac