

T30S R15W  
NW1/4 SE 1/4

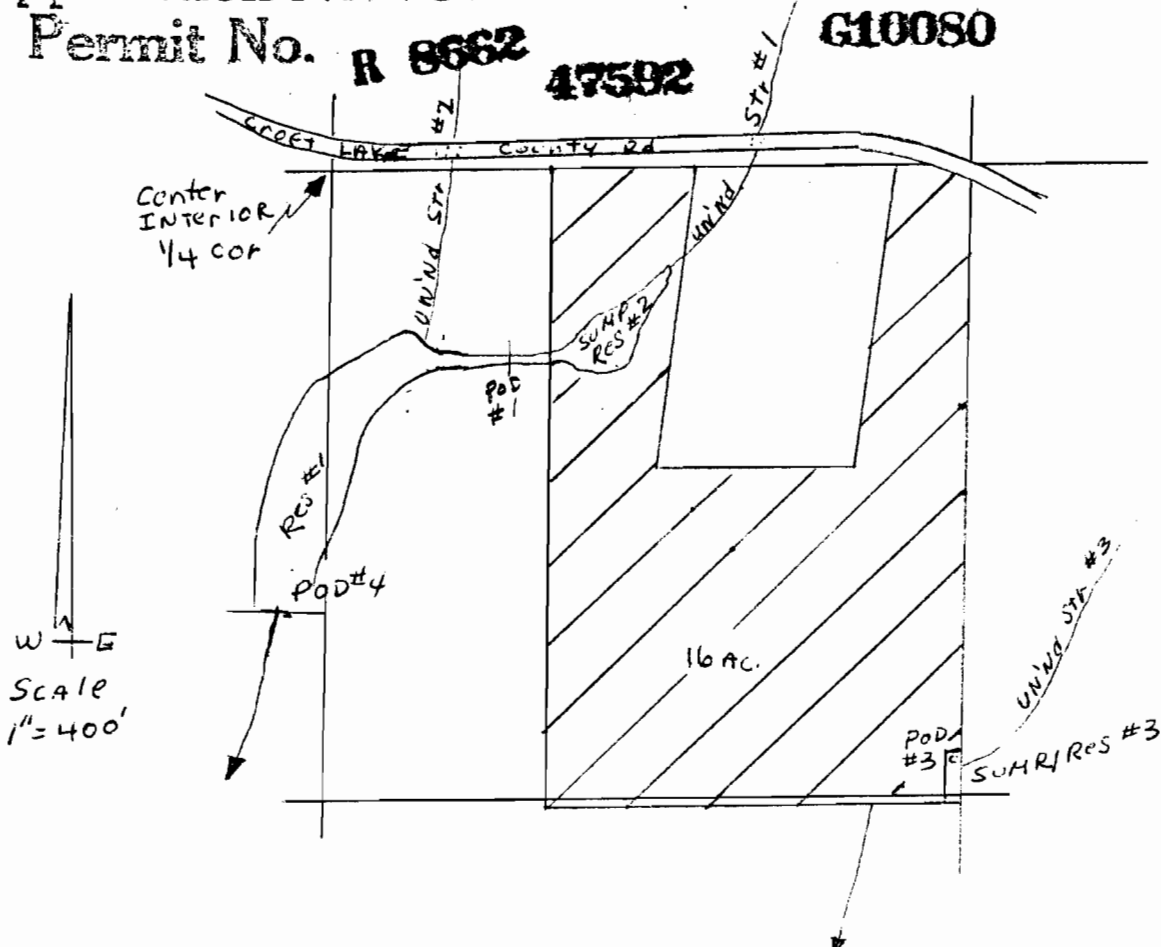
RECEIVED  
JUN 25 1982

WATER RESOURCES DEPT  
SALEM, OREGON

Application No. R-63735, Sec 11  
Permit No. R 8662 and G-10769

47592

G10080



SOURCES:

- POD #1 400'S 380'E FA Interior 1/4 Corner direct flow & stored water
- POD #2 400'S 380'E " " " "
- POD #3 1280'S 1300'E " " direct flow, stored water, Ground WATER
- POD #4 920'S 100'W " " direct flow, stored water

USES:

Primary Chanberry Irrigation, temperature Control AND Flood Harvest from direct flow, From UNIND STR #1. Supp irrigation, Supp temperature Control, Supp Flood Harvest From All other Sources.

RECEIVED

DEC 10 1982

WATER RESOURCES DEPT.  
SALEM, OREGON

RECEIVED

JUN 25 1982

WATER RESOURCES DEPT  
SALEM, OREGON

RECEIVED

OCT 6 1982

WATER RESOURCES DEPT.  
SALEM, OREGON

By WAYNE Foster