

SECTION 32 T.39S. R.8W. W. M.

JOSEPHINE COUNTY

1" = 400'

RECEIVED

MAY 6 1963

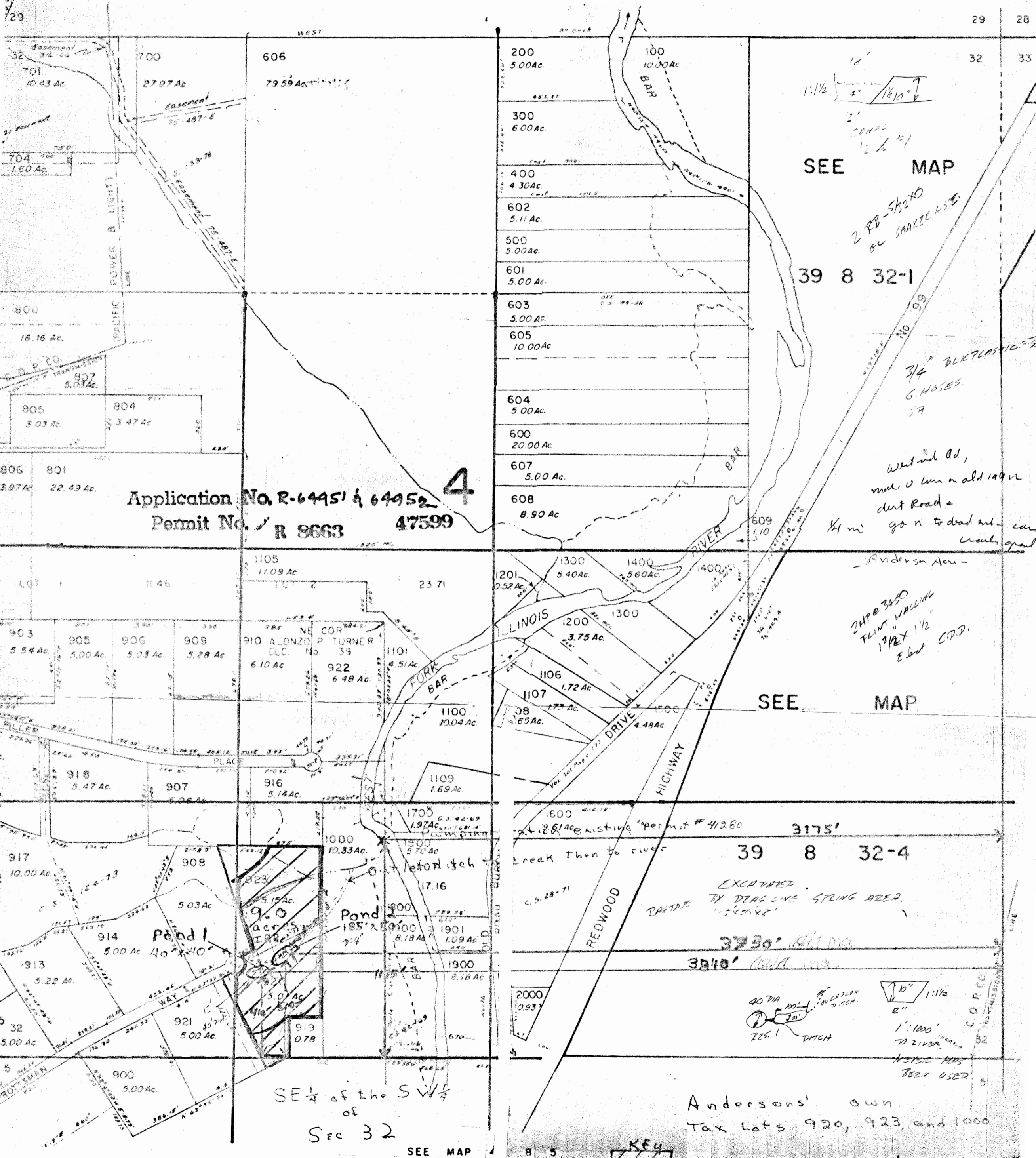
WATER RESOURCES DEPT. SALEM, OREGON

RECEIVED

APR 26 1963

WATER RESOURCES DEPT. SALEM, OREGON

SEE MAP 39 8 29



Application No. R-64451 & 64452 **4**  
 Permit No. R 8663 47599

SEE MAP

39 8 32-1

SEE MAP

39 8 32-4

Andersons' own  
 Tax Lots 920, 923, and 1000

SE 1/4 of the SW 1/4  
 of  
 Sec 32

SEE MAP

KEY