

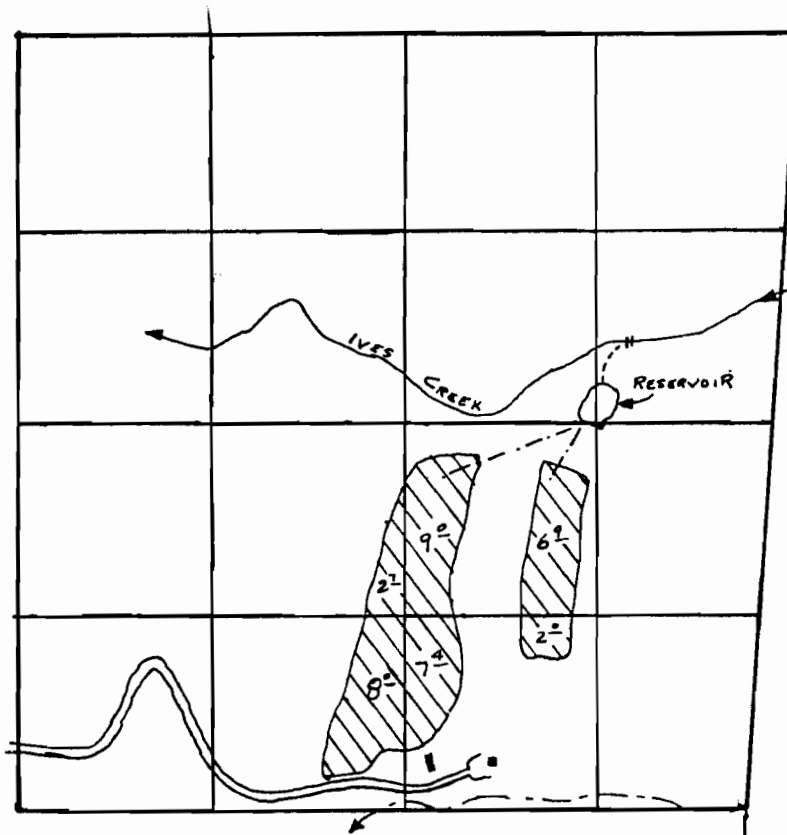
T. 8 S. R. 25 E. W.M.

Section 24

Application No. R-65076, 68077

Permit No. R 8799 47608

4" = 1 mile



Ives Creek Diversion is 8480'N & 800'W  
from SE corner of Section 25

5280'  
SE. CORNER OF  
SECTION. 25

RECEIVED  
MAY 9 1983  
WATER RESOURCES DEPT.  
SALEM, OREGON