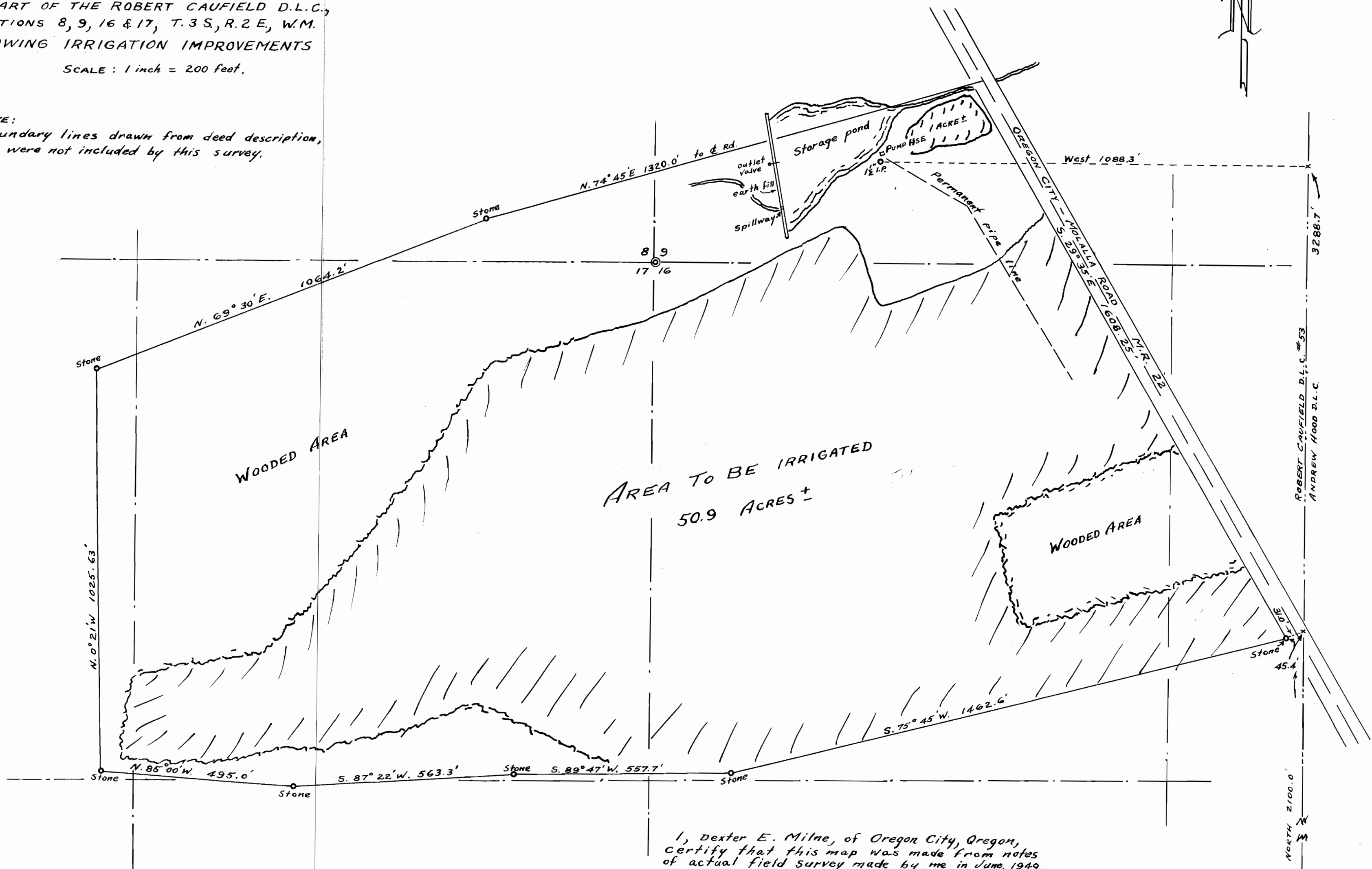


MAP OF A. GUNTHER PROPERTY,
 A PART OF THE ROBERT CAUFIELD D.L.C.,
 SECTIONS 8, 9, 16 & 17, T.3 S., R.2 E., W.M.
 SHOWING IRRIGATION IMPROVEMENTS

SCALE: 1 inch = 200 feet.

NOTE:
 Boundary lines drawn from deed description,
 and were not included by this survey.



I, Dexter E. Milne, of Oregon City, Oregon,
 certify that this map was made from notes
 of actual field survey made by me in June, 1949.
 The monument is an iron pipe 1 1/2" x 42", and is
 North 3288.7 ft., and West 1088.3 ft. from the
 S.E. corner of the Robert Caufield D.L.C. #53,
 T.3 S., R.2 E., W.M.

Dexter E. Milne
 Registered Oregon Land surveyor #245

S.E. CORNER
 ROBERT CAUFIELD
 D.L.C. #53

Application No. R-23606
 23607
 Permit No. R.9
 1980