

SECTION

15

Lots 12 & 13 of

William Acres

A Subdivision of

Lot 67, Steels Addition to Beaverton

TOWNSHIP 1 S, RANGE 1 W, W. M.

North

Scale 10 Chains to 1 inch.

STATE ENGINEER
RECEIVED

FEB 21 1931

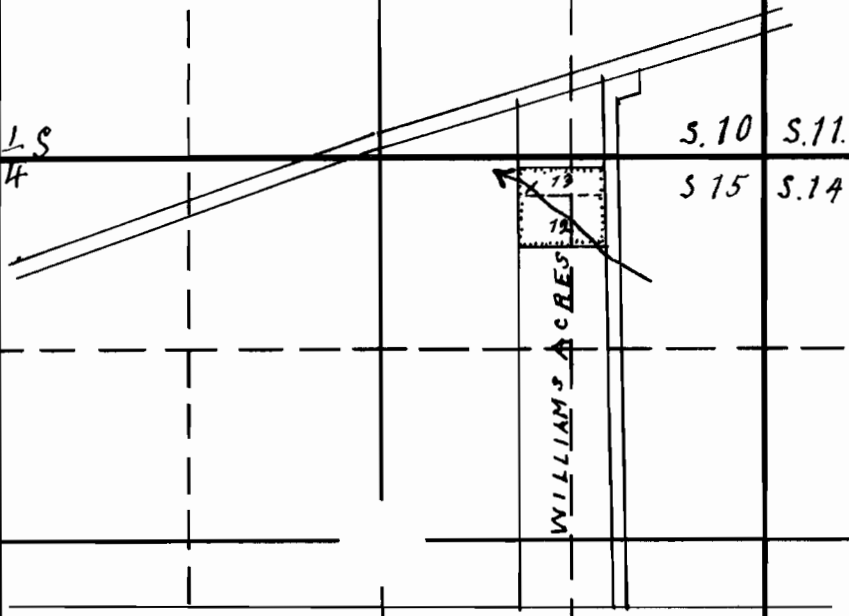
SALEM, OREGON

West

LS
4

LS
4

East



South

APPLICATION No. 13965

PERMIT No. 10062