

SECTION

TOWNSHIP 25, RANGE 1E., W. M.

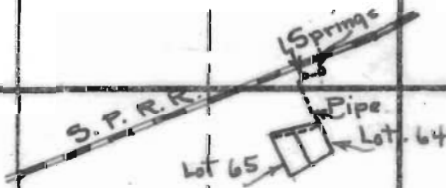
North

STATE ENGINEER
RECEIVED

JUN 8 1931

SALEM, OREGON

7



Lots Nos. 64 and 65 of
BRYANT ACRES as shown
on duly recorded plat on file
in Clackamas County.

18

South

APPLICATION No. 14134

PERMIT No. 10211

West

East