

STATE ENGINEER
FILED

point of diversion
1517.2 ft North of
2713.6 East of 1/4 corner between Sec
3-4 T.4S.R.8.W.17

SEC 4 T.4S.R.8.W.17
SEC 3 T.4S.R.8.W.17

SURVEYOR'S CERTIFICATE

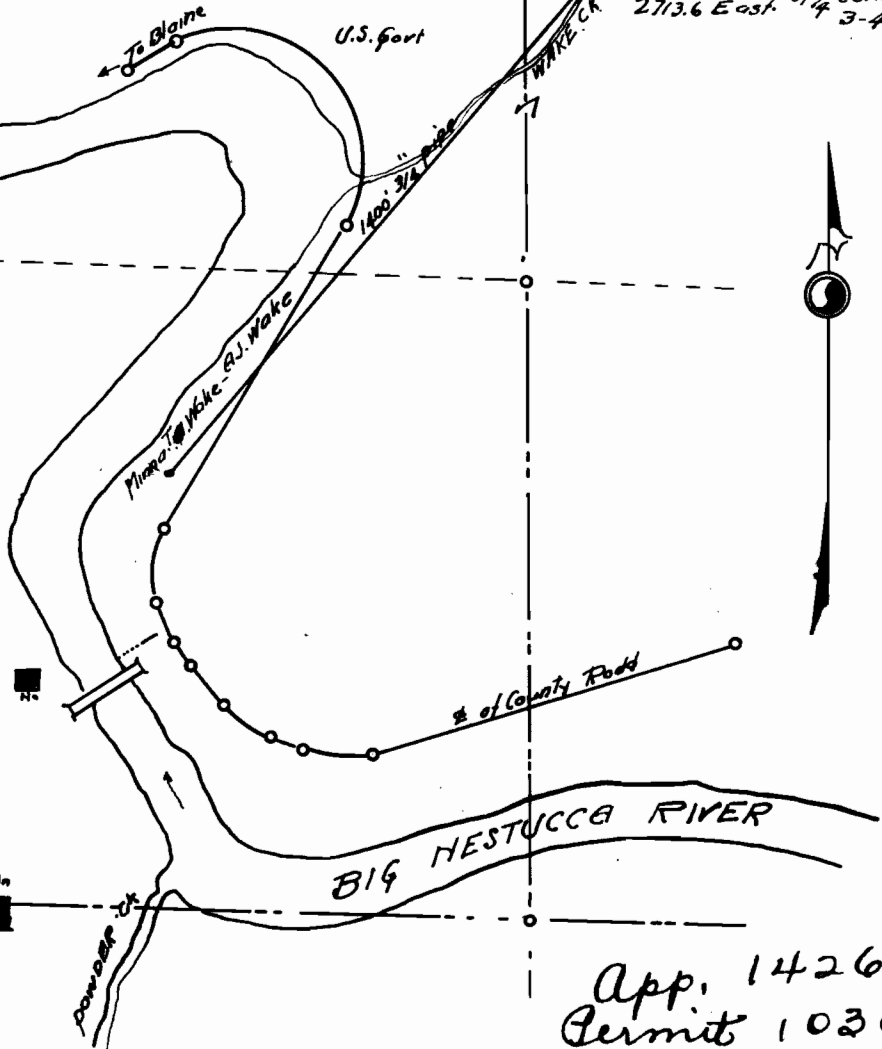
I, W.E. Anderson County Surveyor of
Tillamook County, Ore. do hereby certify
that this map was made from notes taken
during an actual survey made by me
in Aug. 1931. and that it correctly represents
the works herein shown
County Surveyor
W.E. Anderson

A.J. WAKE WATER RIGHT.

LOCATED
SEC. 3. T.4S.R.8.W.17. TILLAMOOK ORE.
Aug. 1931. Scale 1"=400.

1/4 cor
S 556926
E 412929

1
2
3
4
5
6
7
8
9
10
11
12



App. 14263
Permit 10301