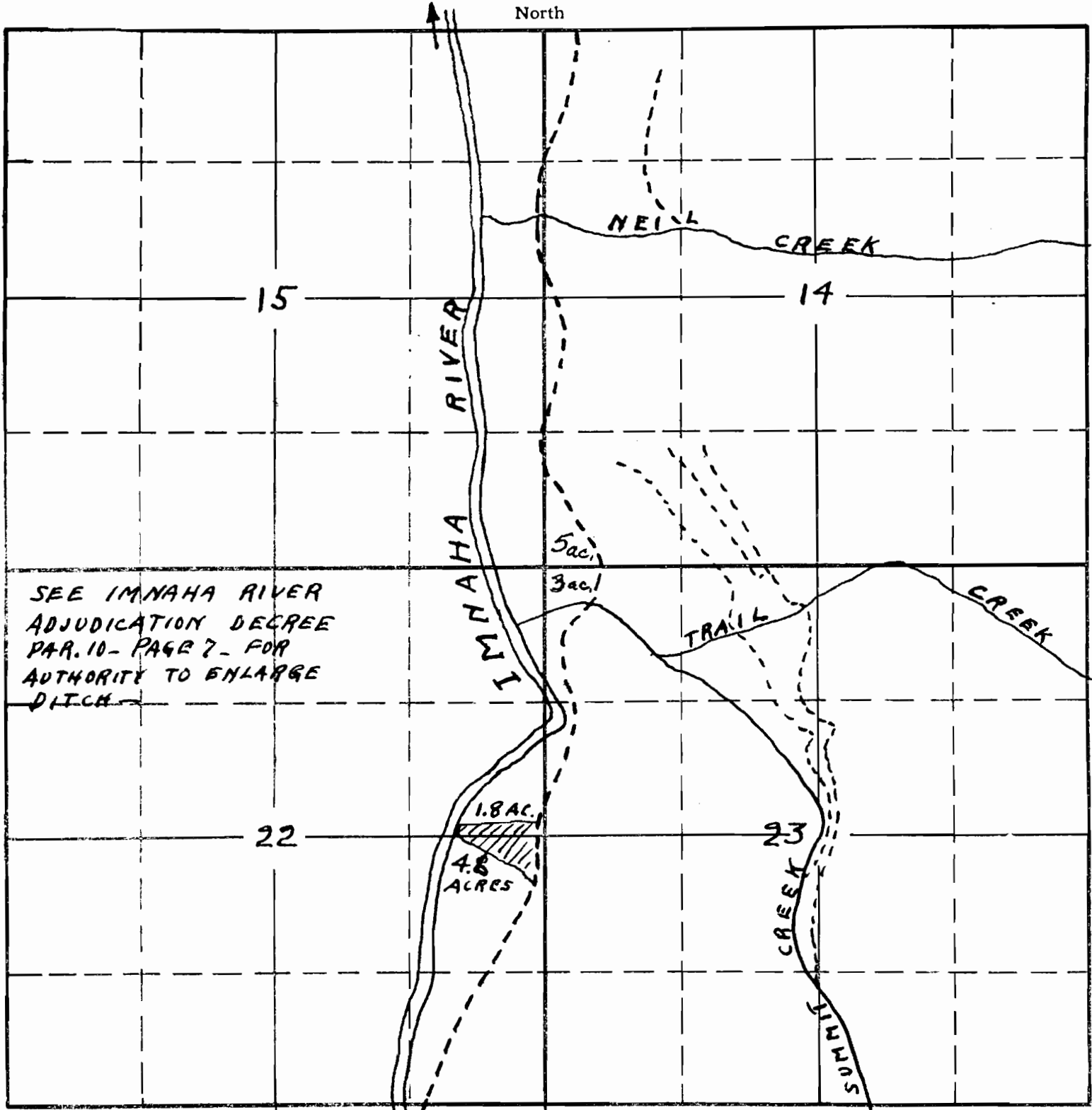


TOWNSHIP 35, RANGE 48E W. M.



SEE IMNAHA RIVER
 ADJUDICATION DECREE
 PAR. 10 - PAGE 7 - FOR
 AUTHORITY TO ENLARGE
 DITCH

1.8 AC.
 4.8 ACRES

DRAWN FROM IMNAHA
 RIVER ADJUDICATION
 SURVEY MAPS -
 9/29/31 - 18 - 27

APPLICATION No. 14341
 PERMIT No. 10370