

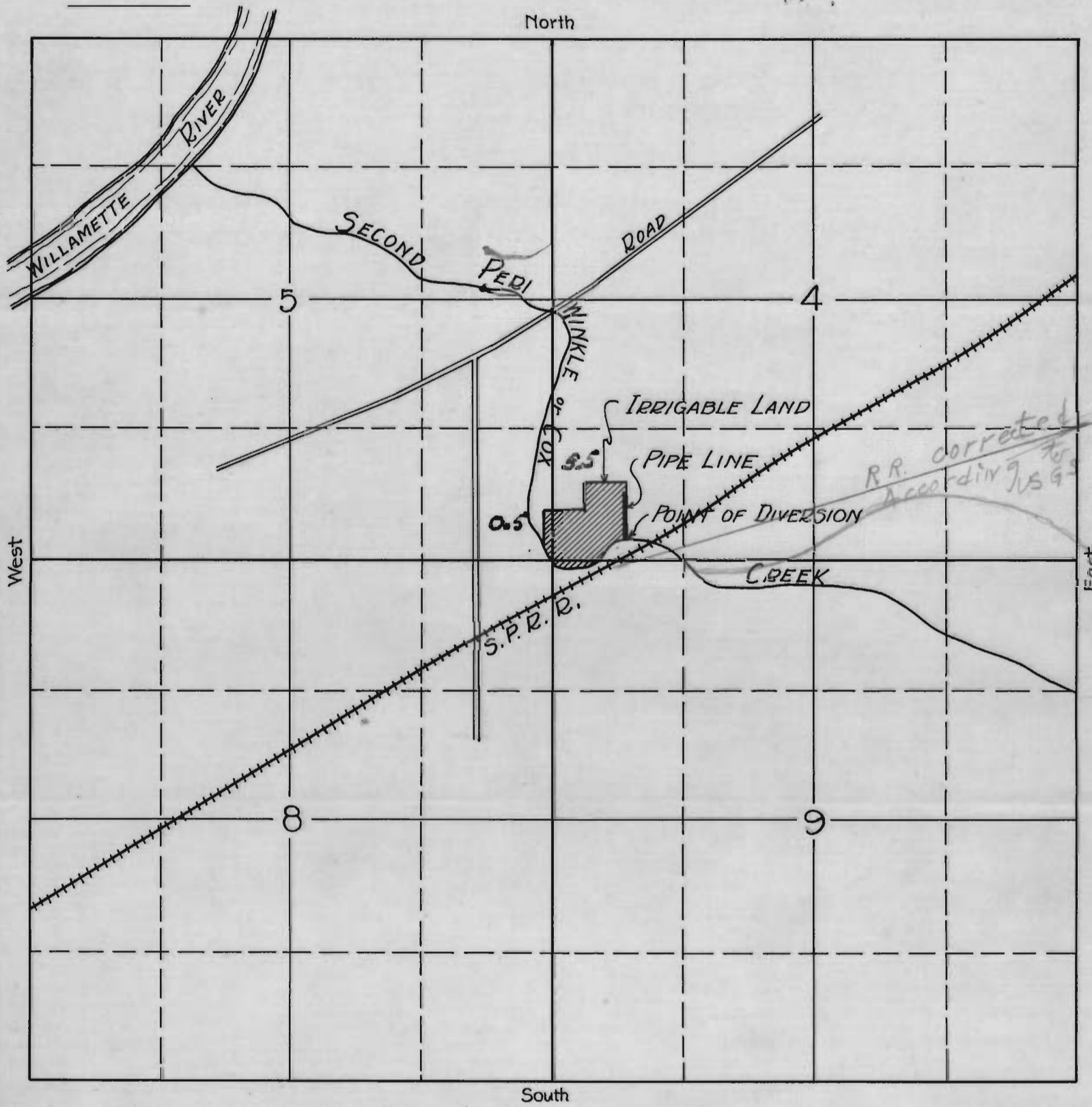
SECTION

\_\_\_\_\_

\_\_\_\_\_

\_\_\_\_\_

TOWNSHIP 11S, RANGE 3W, W.M.



*S.P.R.R. and creek location not  
entirely correct according to U.S.G.S.  
map (Alamy Quad) and witnesses — U.S.B. 9/30/32*

APPLICATION No. 14342  
PERMIT No. 10371