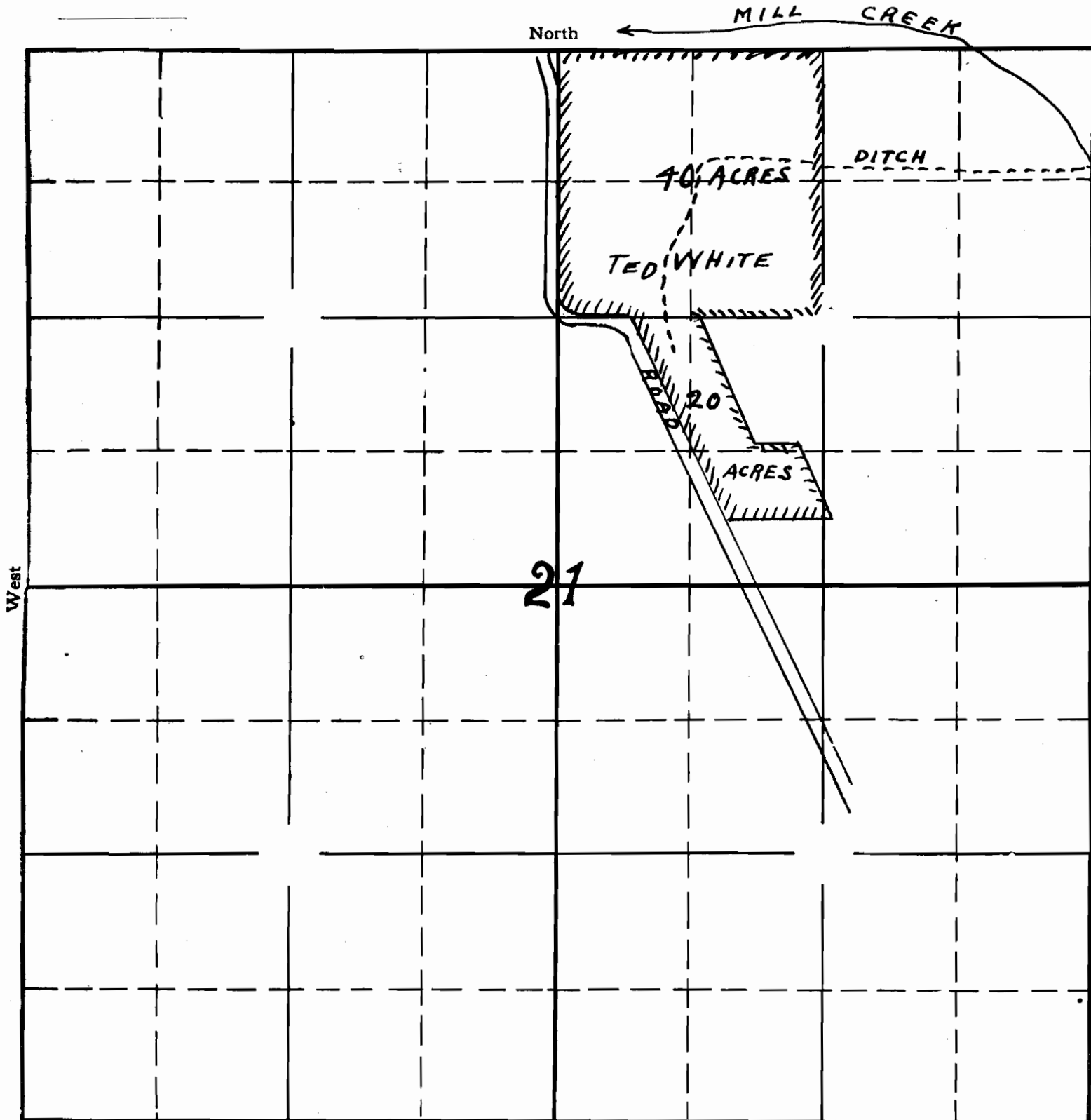


TOWNSHIP 35, RANGE 40E, W. M.



PREPARED IN STATE ENGINEERS  
OFFICE FROM APPLICANTS DEED  
AND TELECASET QUADRANGLE -  
11/16/31 - 18.

APPLICATION No. 14313  
PERMIT No. 10417

STATE ENGINEER  
RECEIVED

OCT 19 1931

SALEM, OREGON

35R40E

T539 R41E

