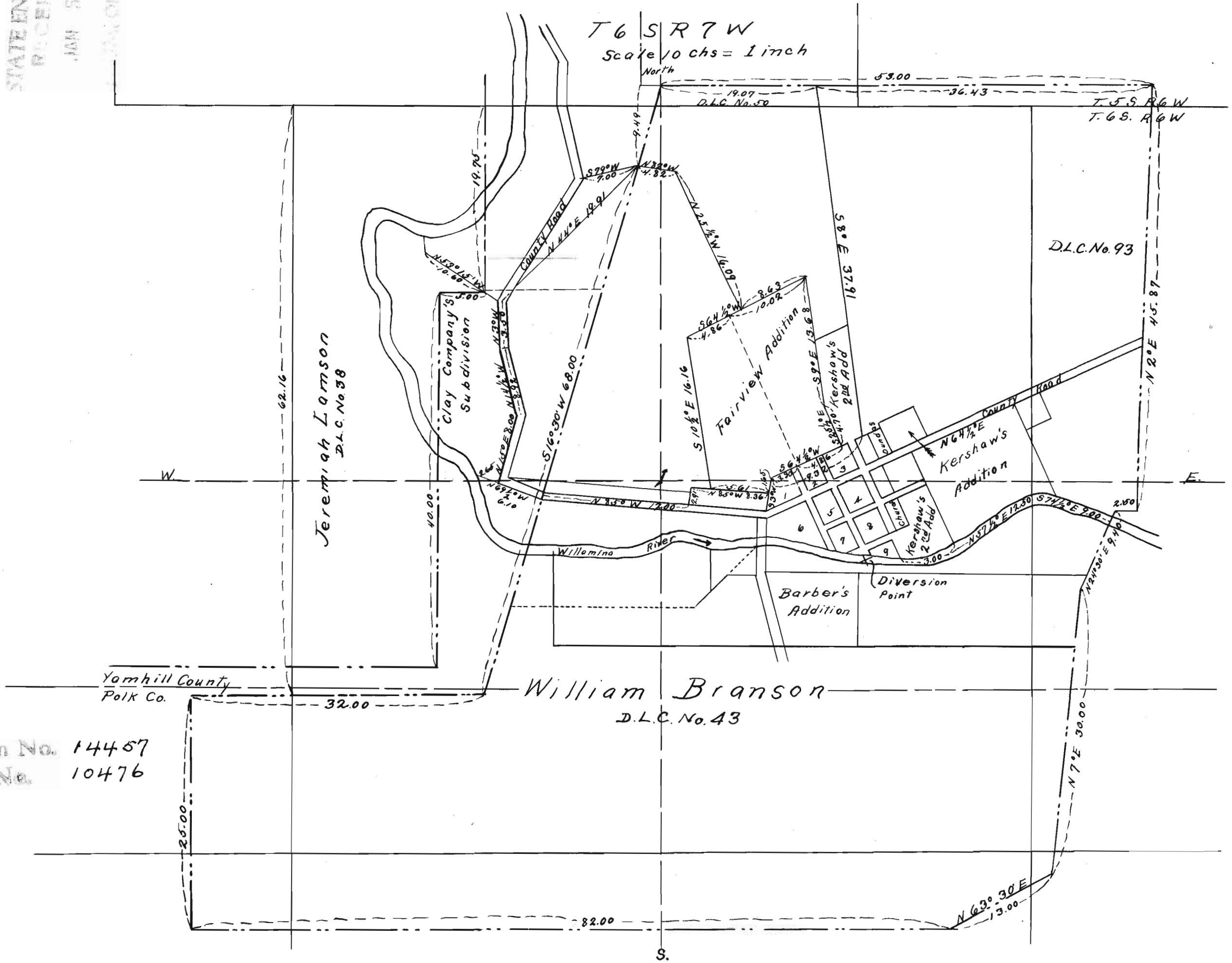


STATE ENGINEER
RECEIVED
JAN 5 1992
POLK COUNTY, OREGON



Application No. 14457
Permit No. 10476

Yamhill County
Polk Co.

William Branson
D.L.C. No. 43

D.L.C. No. 93

T. 5. S. R. 6. W
T. 6. S. R. 6. W

T6S R7W
Scale 10 chs = 1 inch
North

S.