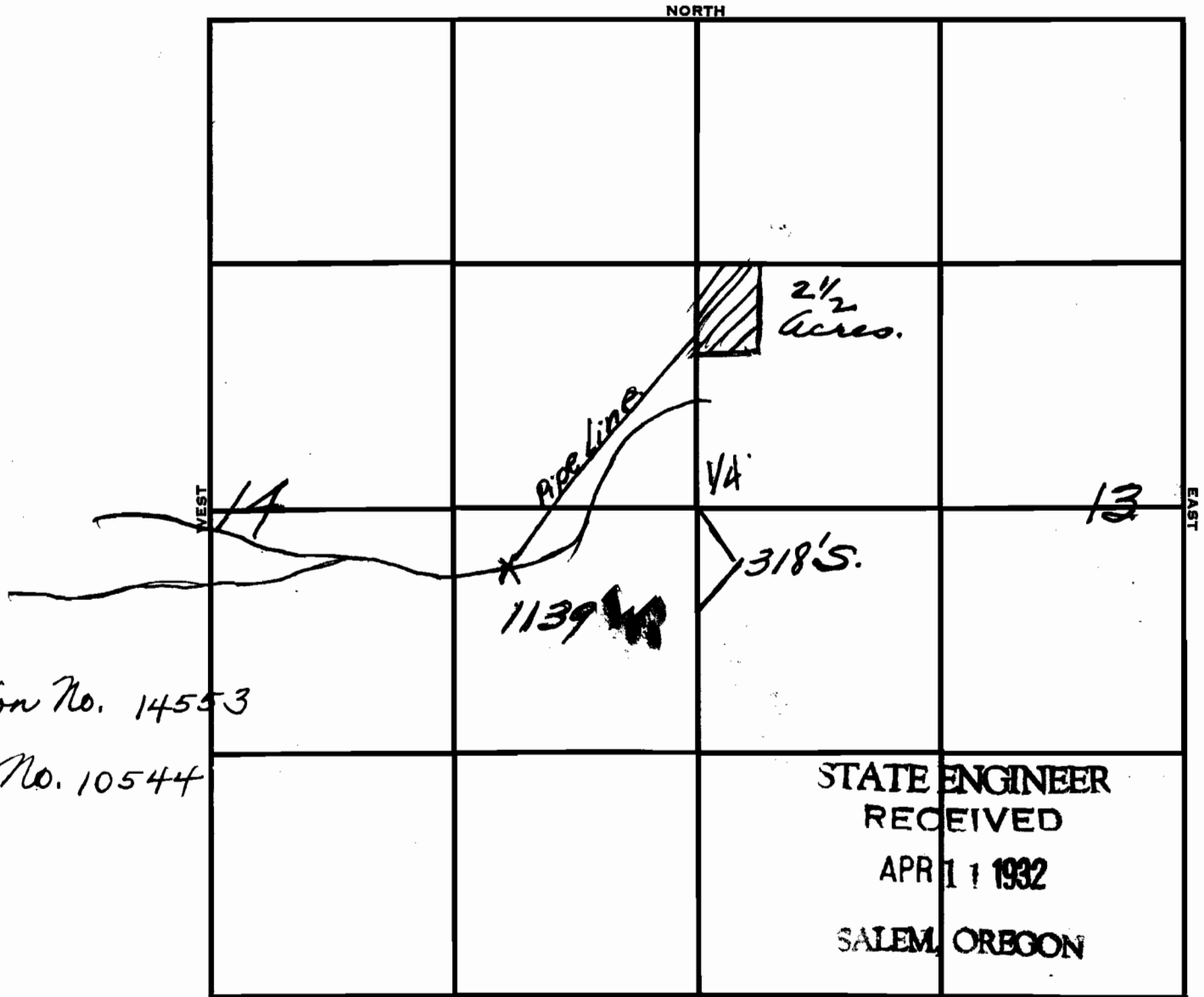


Section 13+14 Township 31S Range 12W Meridian Willamette.



Application No. 14553  
Permit No. 10544

STATE ENGINEER  
RECEIVED  
APR 11 1932  
SALEM, OREGON

REMARKS Intake lies 318 ft. S. and 1139 ft. W of 1/4 Cor between sections 13 and 14