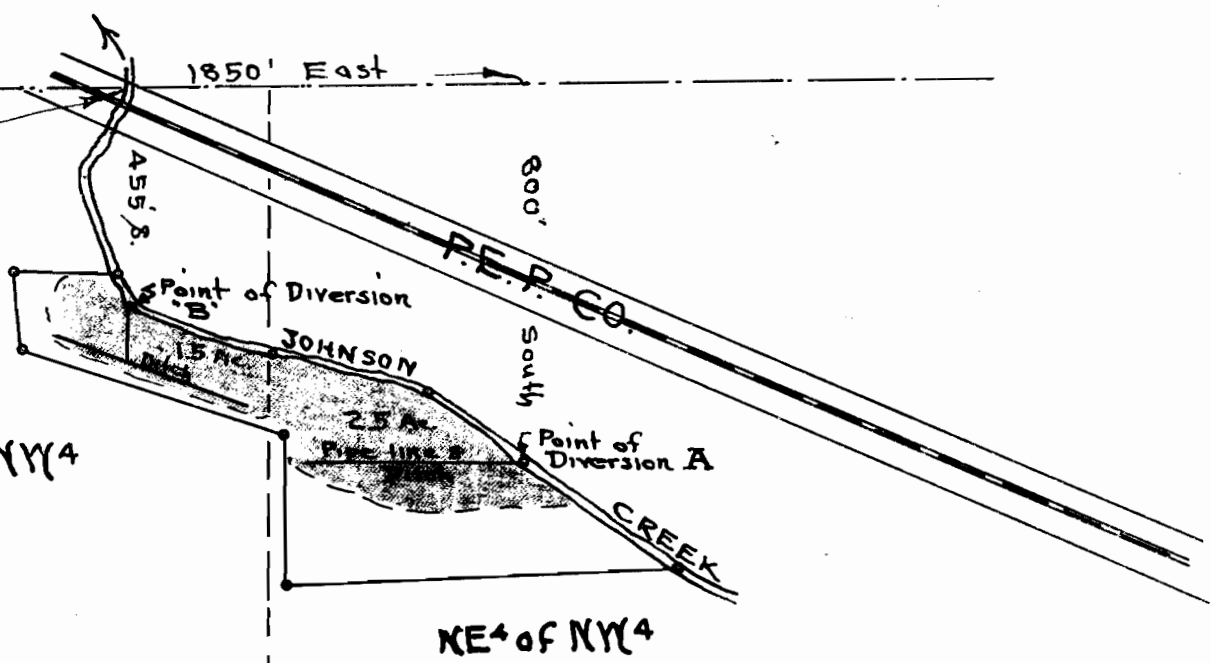


24 19
25 30

1020' East 1850' East



NW 1/4 of NW 1/4

NE 1/4 of NW 1/4

SW 1/4 of NW 1/4

Scale 1 inch = 400 ft.

MAP

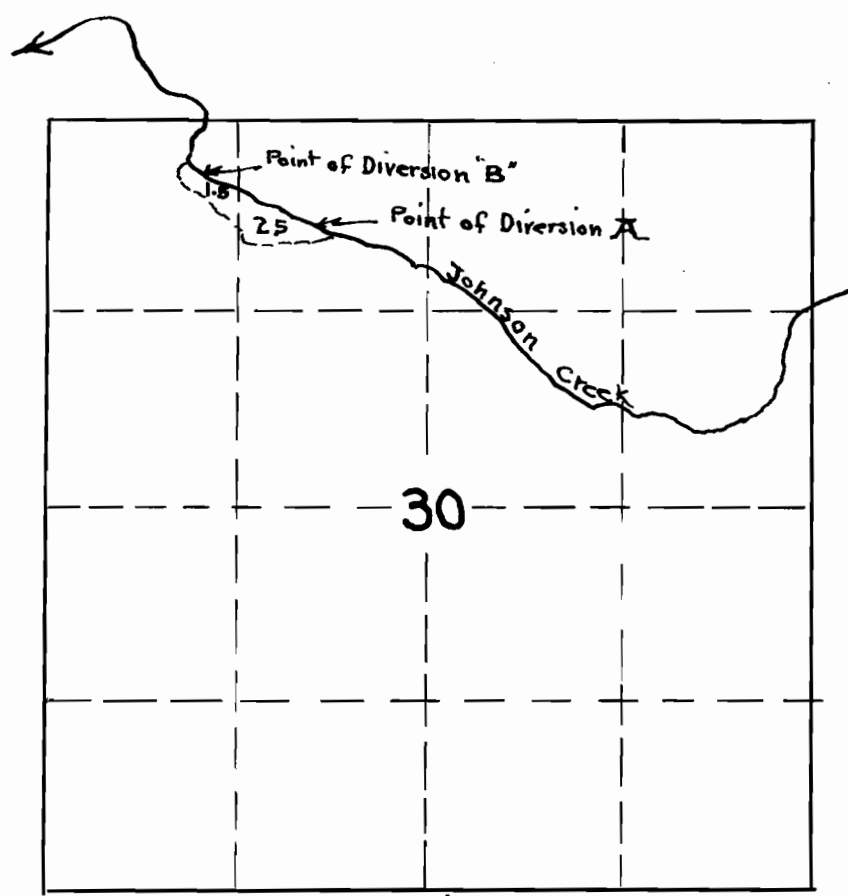
To accompany application of
 Oliver Irwin Jensen
 for permit to appropriate water
 from Johnson Creek, in Sec. 30
 T. 15 R. 2 E. N. M. for purpose of
 Irrigation -

Point of Diversion A is 800 ft.
 South and 1850 feet East of the
 NW Cor. of Sec. 30 -

Point of Diversion "B" is 455 ft.
 South and 1020 feet East of
 the NW Cor. of Sec. 30.

Land to be irrigated as
 follows -

- 1.5 Acres in NW 1/4 of NW 1/4
- 2.5 Acres in NE 1/4 of NW 1/4.



Scale 1 inch = 1320 ft.

Application No. 14600
 Permit No. 10605