

ST. ANDREWS SCHOOL
IRRIGATION
AND
WATER SUPPLY
WORKS

Umatilla Co. Or.

I Geary Kimbrell of Pendleton,
Or. do hereby certify that this map
was made from notes taken during
an actual survey made by me
on the 18th day of Dec. 1911 and that
it correctly represents the works
described in the accompanying
application, together with the location
of streams and other ditches in the
immediate vicinity.

Geary Kimbrell
Surveyor

OFFICE OF STATE ENGINEER

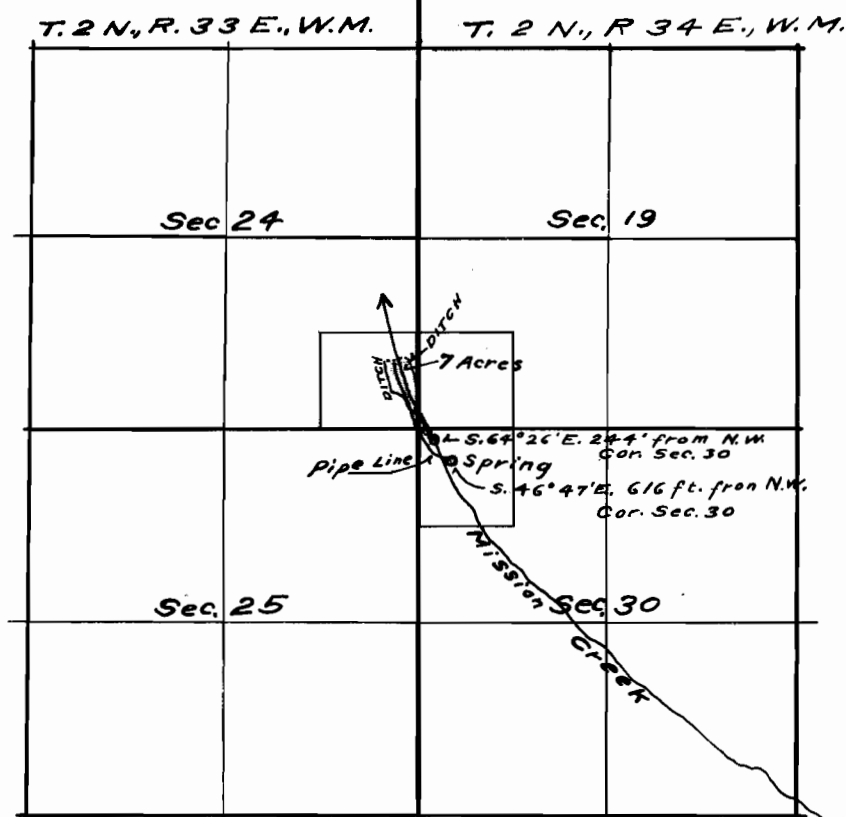
RECEIVED

FEB 5 1912

STATE OF OREGON

Application No. 2063

SECTION NO. 1071



Scale 40 Chs. = 1 Inch