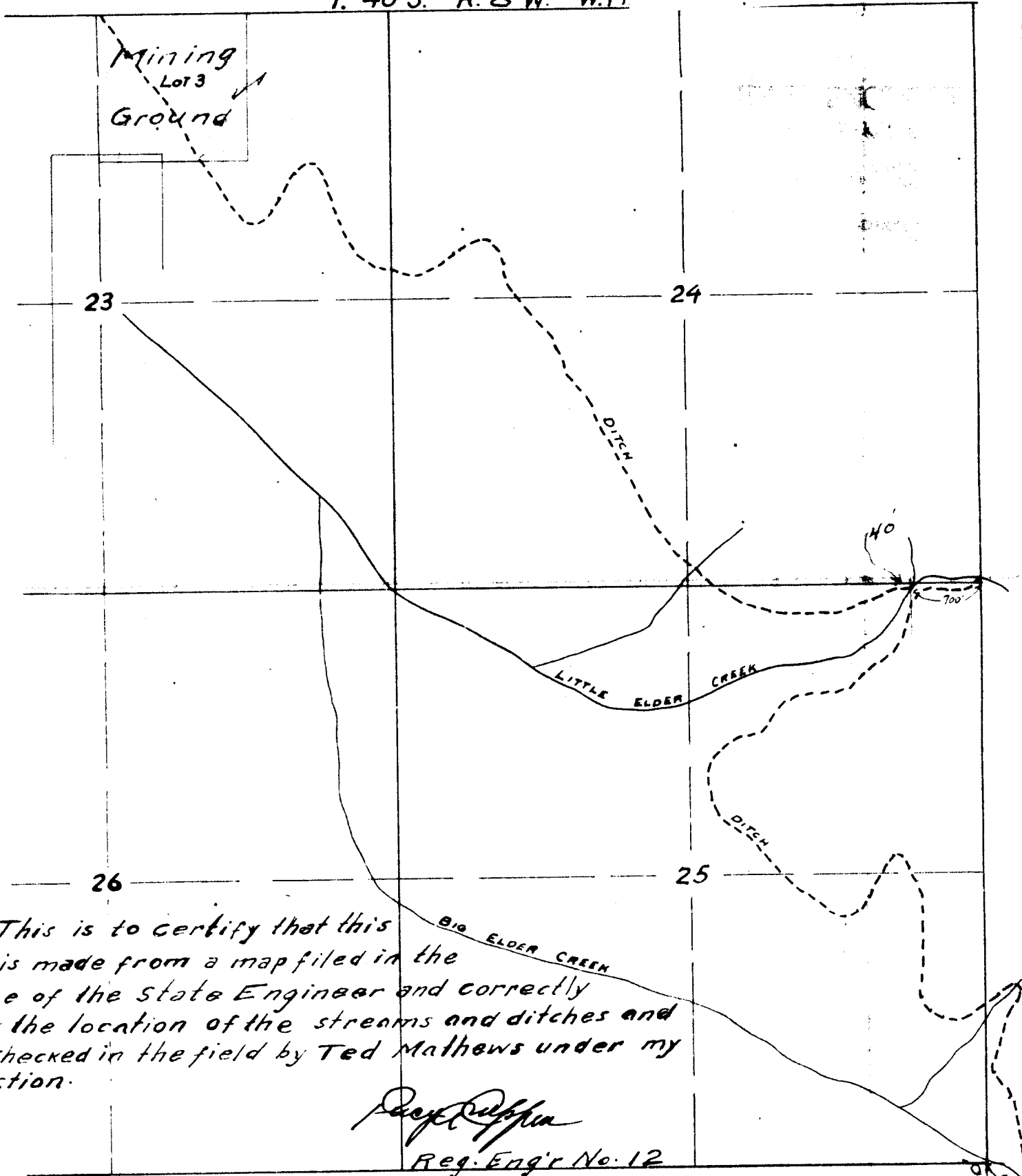


40 - x - 2  
Permit: S 10730  
Volume: 8  
Strm: LITTLE ELDER CR  
Trib: E FL ILLINOIS R  
Priority: 10/21/32

T. 40 S. R. 8 W. W.M



This is to certify that this map is made from a map filed in the office of the State Engineer and correctly shows the location of the streams and ditches and was checked in the field by Ted Mathews under my direction.

*Pace Ruffin*  
Reg. Eng'r No. 12

This tracing made from the original application map # 3921

Scale 1 in. = 1200 ft.

14730  
10730