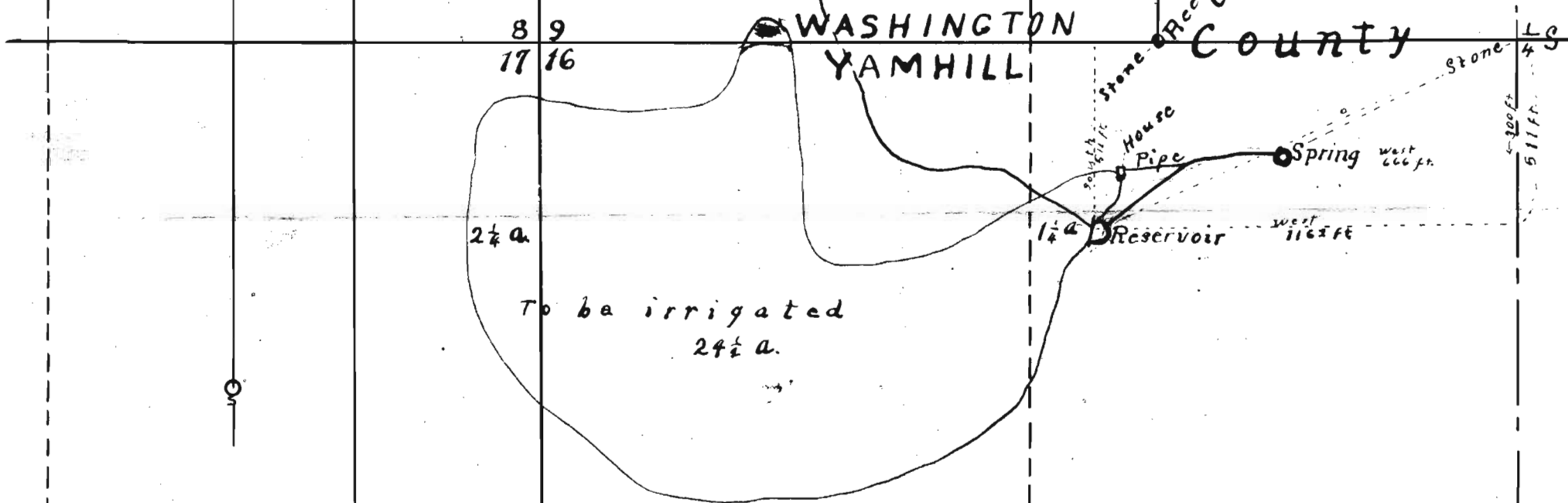


North Boundary Geo. Stewart D. L. C.

T. 2 S., R. 3 W.

Scale 400 ft. to 1 inch.



Application No. 14825  
Permit No. 10777

NE. 1/4 of NW. 1/4 of sec. 13,	1.25 acre.
NW. 1/4 of NW. 1/4 of sec. 16,	24.50 acres.
NE. 1/4 of NE. 1/4 of sec. 17,	2.25 acres.
Total	28.00 acres.

1/4 S.

This is only map submitted — Do not send out