

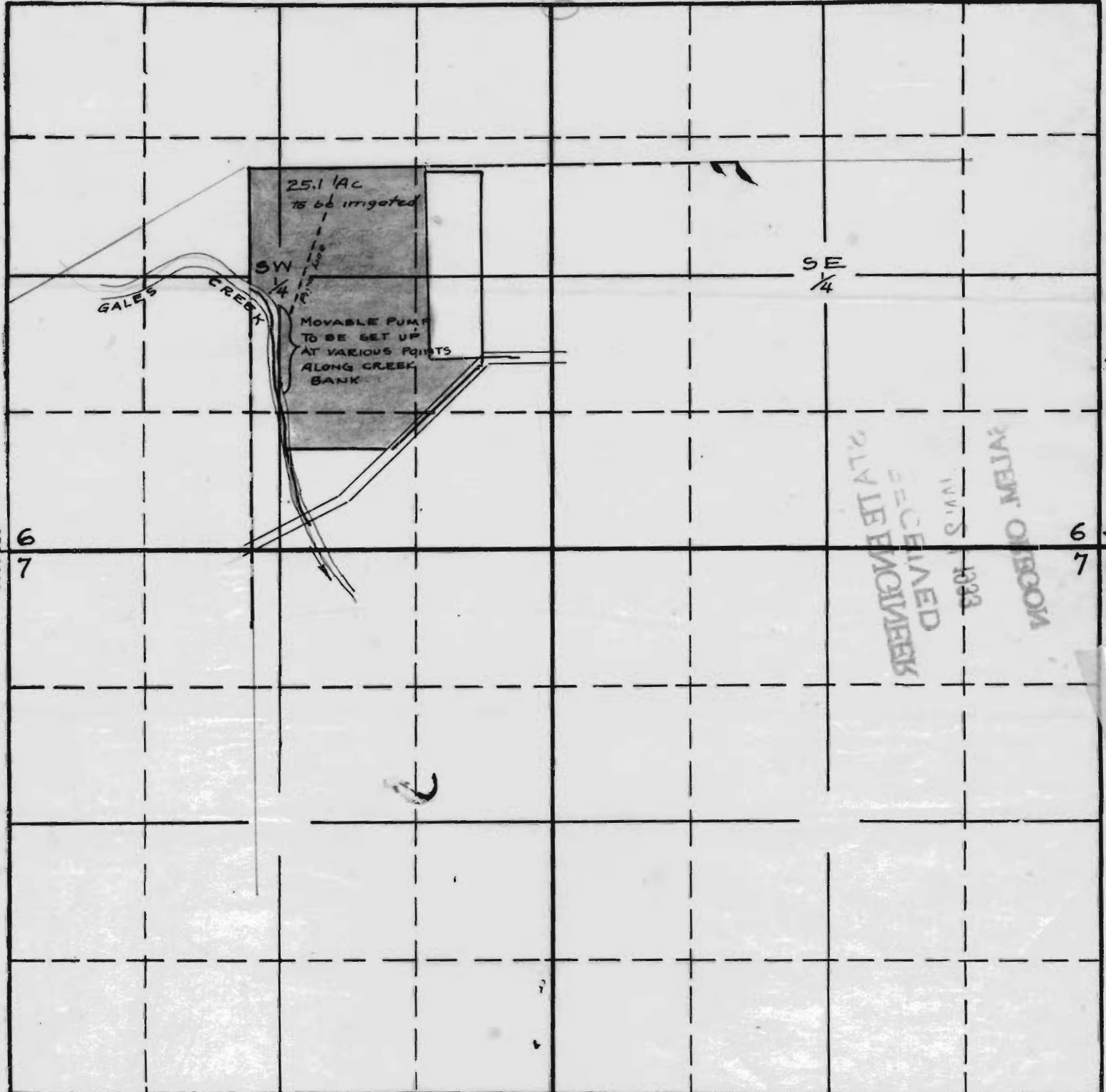
SECTION

6

TOWNSHIP 1 S., RANGE 3 W., W. M.

Scale 10 chs = 1 inch

North



RECEIVED  
PLATE ENGINEER  
JAN 15 1928  
STATE OF OREGON

South

APPLICATION No. 14851

PERMIT No. 10815

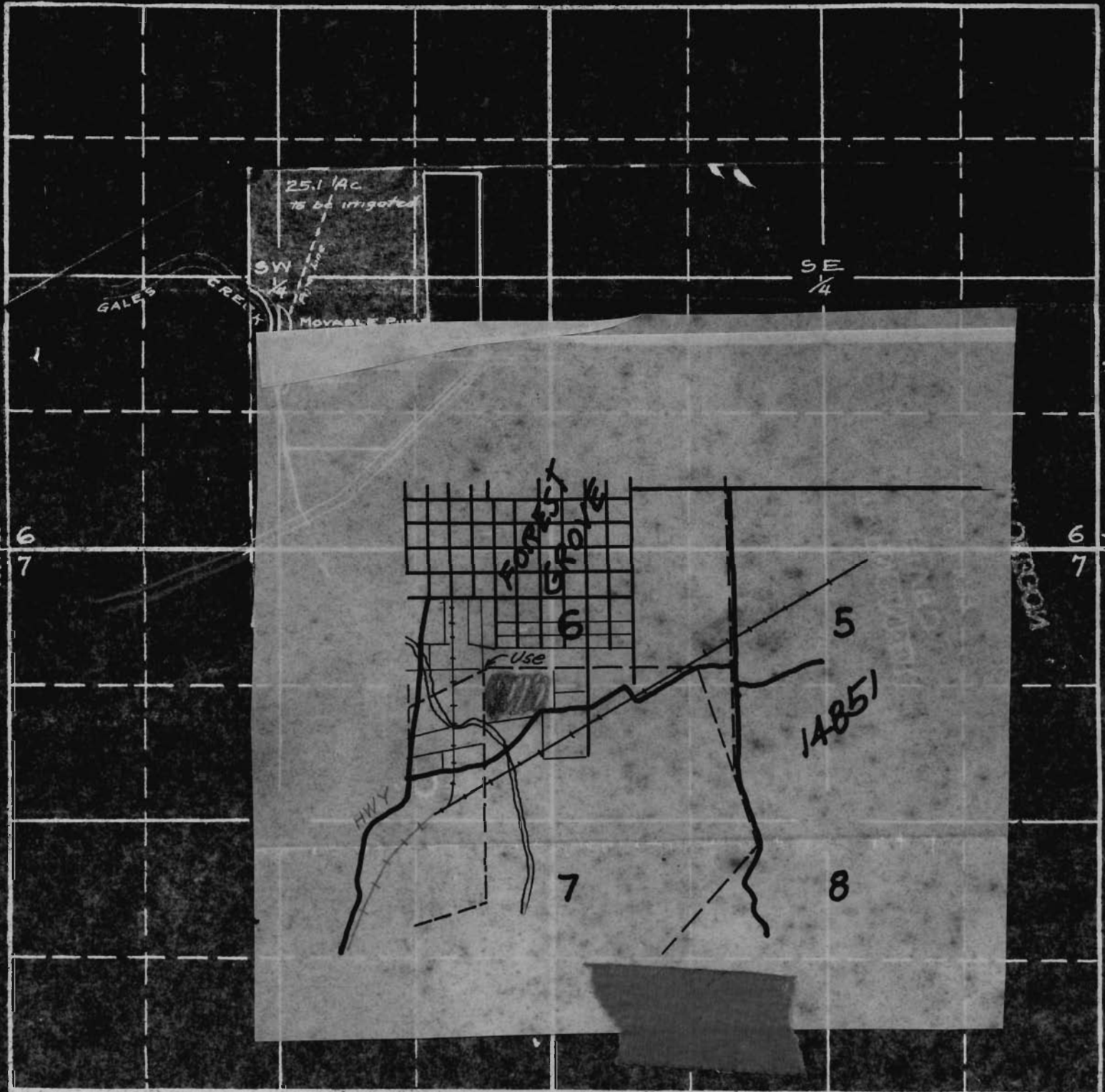
SECTION

6

TOWNSHIP 1 S., RANGE 3 W., W. M.

Scale 10 chs = 1 inch

North



South

APPLICATION No. 14851  
PERMIT No. 10815