

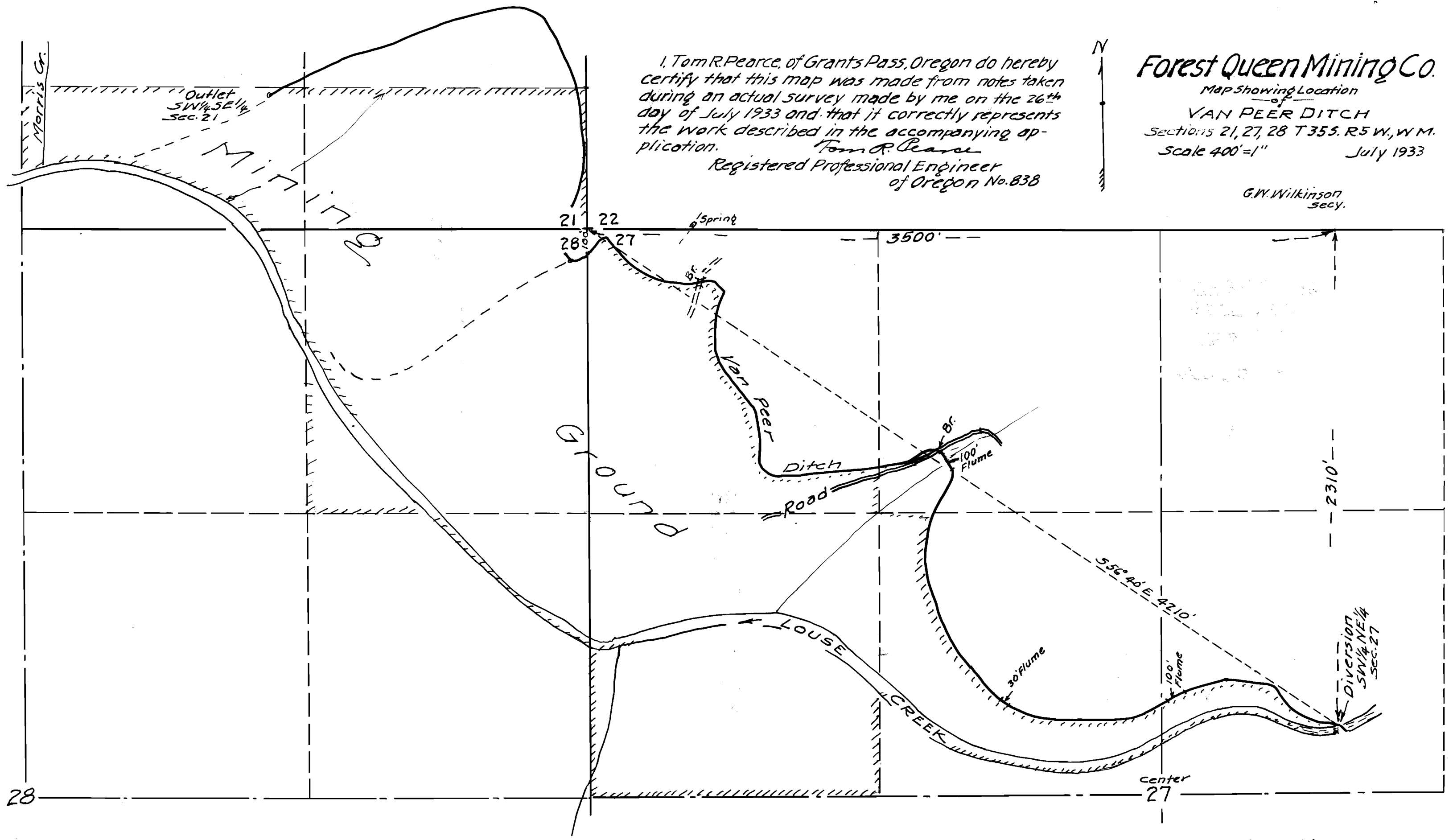
# Forest Queen Mining Co.

Map showing Location  
 VAN PEER DITCH  
 Sections 21, 27, 28 T35S. R5W, W.M.  
 Scale 400' = 1" July 1933

I, Tom R. Pearce, of Grants Pass, Oregon do hereby  
 certify that this map was made from notes taken  
 during an actual survey made by me on the 26<sup>th</sup>  
 day of July 1933 and that it correctly represents  
 the work described in the accompanying ap-  
 plication.  
 Tom R. Pearce  
 Registered Professional Engineer  
 of Oregon No. 838



G.W. Wilkinson  
 Secy.



App. No. 15053  
 Per. No. 10962