

Permit: S 11086  
Volume: 8  
Strm: DEMOCRAT G  
Trib: ALTHOUSE CR  
Priority: 10/20/33

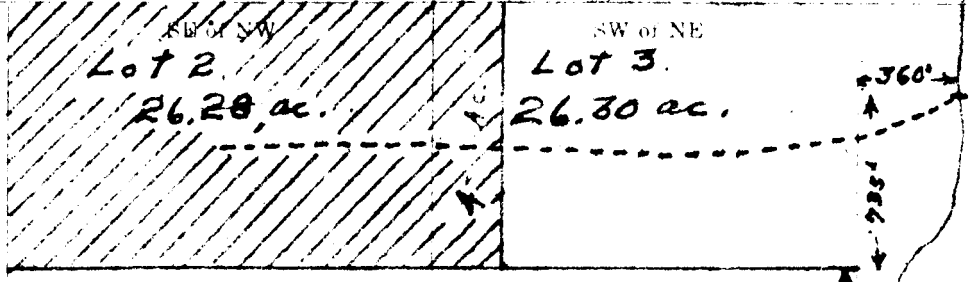
SEC. 6 TWP. 40S SOUTH. RANGE 7<sup>W</sup> WEST (

NW of NW  
NE of NW 40.15 ac.  
NW of NE 40.26 ac.  
NE of NE

C. E. Pullen.

MULVANEY

SW of NW  
SE of SW  
SW of NE 26.30 ac.  
SE of NE



NW of SW  
NE of SW  
NE of SE  
A compass rose is shown on the left with N, S, E, W directions.

SW of SW  
SE of SW  
SW of SE  
SE of SE

APP. No. 15166  
Per. No. 11086