

SIZES OF OPEN DITCHES
 12 line - Sta. 0+00 to 65+00 - 6' bottom
 width - 1/2 to 1 side slopes.
 12 line - Sta. 65+00 to 128+57.5 - 4' bottom
 width - 1/2 to 1 side slopes.
 12 line - Sta. 0+00 to 3+50 - 4' bottom
 width - 1/2 to 1 side slopes.

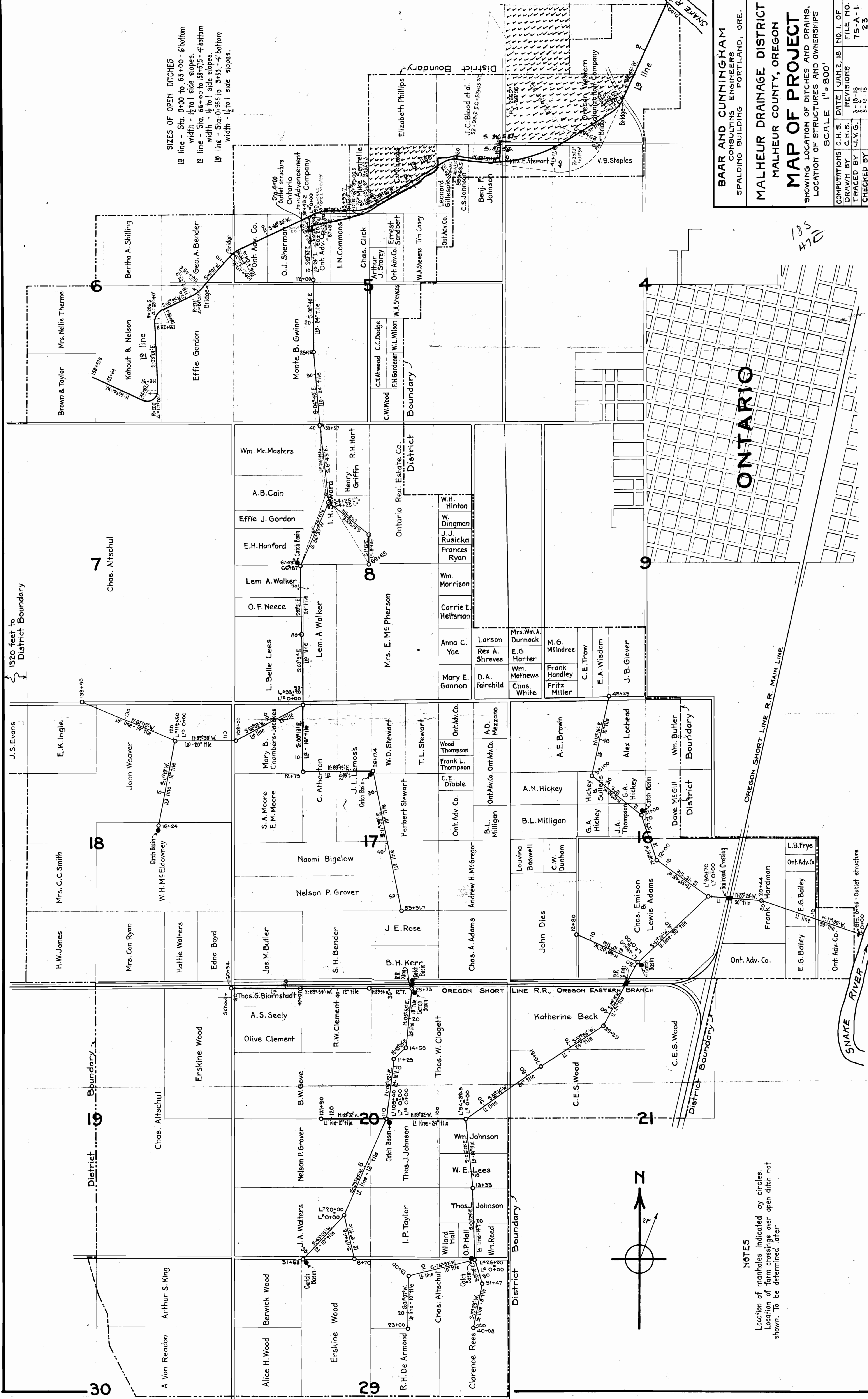
BAR AND CUNNINGHAM
 CONSULTING ENGINEERS
 SPALDING BUILDING
 PORTLAND, ORE.

MALHEUR DRAINAGE DISTRICT
MALHEUR COUNTY, OREGON

MAP OF PROJECT
 SHOWING LOCATION OF DITCHES AND DRAINS,
 LOCATION OF STRUCTURES AND OWNERSHIPS

SCALE 1" = 800'

COMPUTATIONS	C.H.S.	DATE	JAN. 2, 18	NO. 1. OF
DRAWN BY	C.H.S.	REVISIONS	3-13-18	FILE NO.
TRACED BY	J.V.G.		5-15-18	75-A-1
CHECKED BY				23



NOTES
 Location of manholes indicated by circles.
 Location of farm crossings over open ditch not shown. To be determined later.