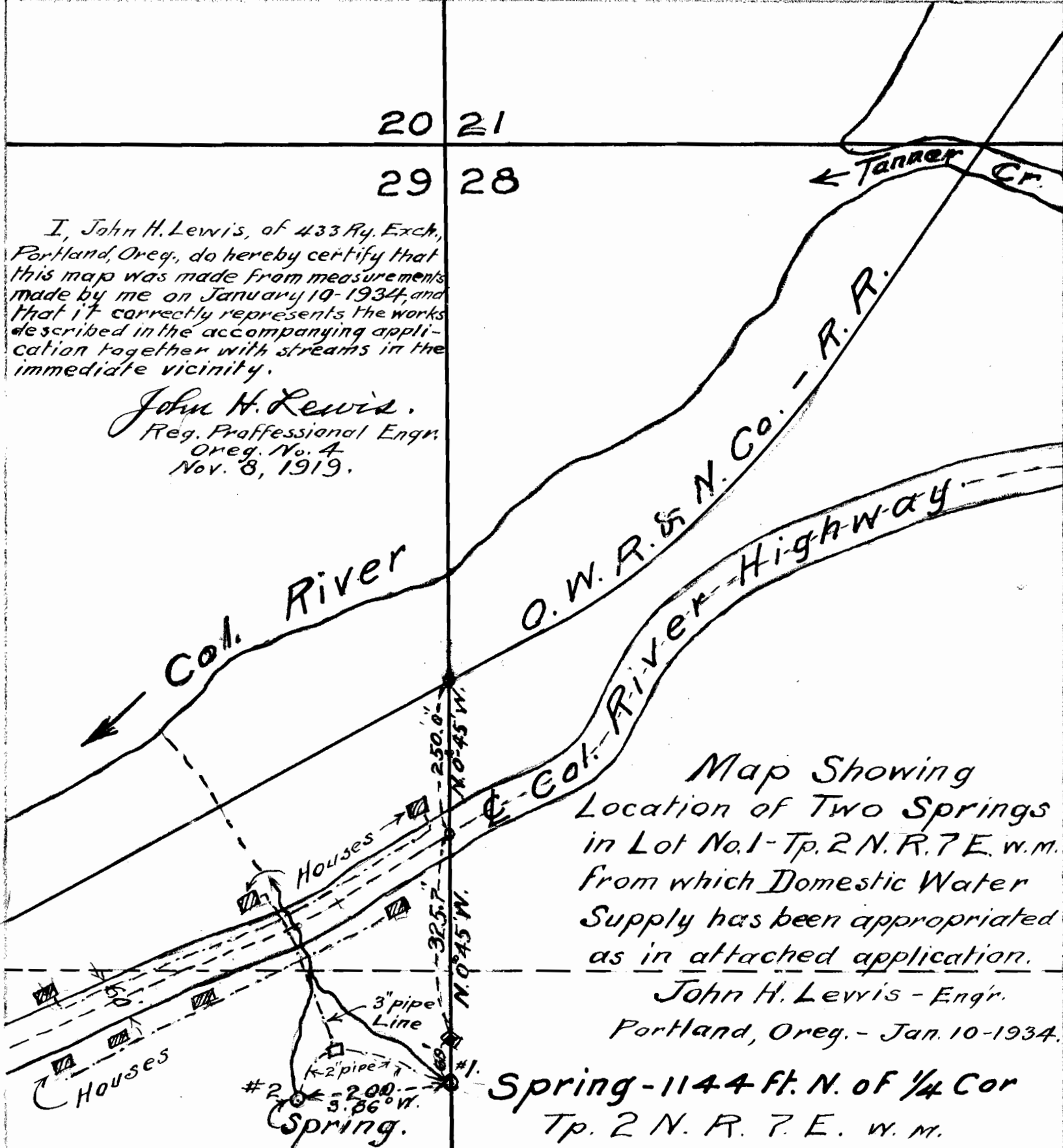


20 21

29 28

I, John H. Lewis, of 433 Ry. Exch., Portland, Oreg., do hereby certify that this map was made from measurements made by me on January 10-1934, and that it correctly represents the works described in the accompanying application together with streams in the immediate vicinity.

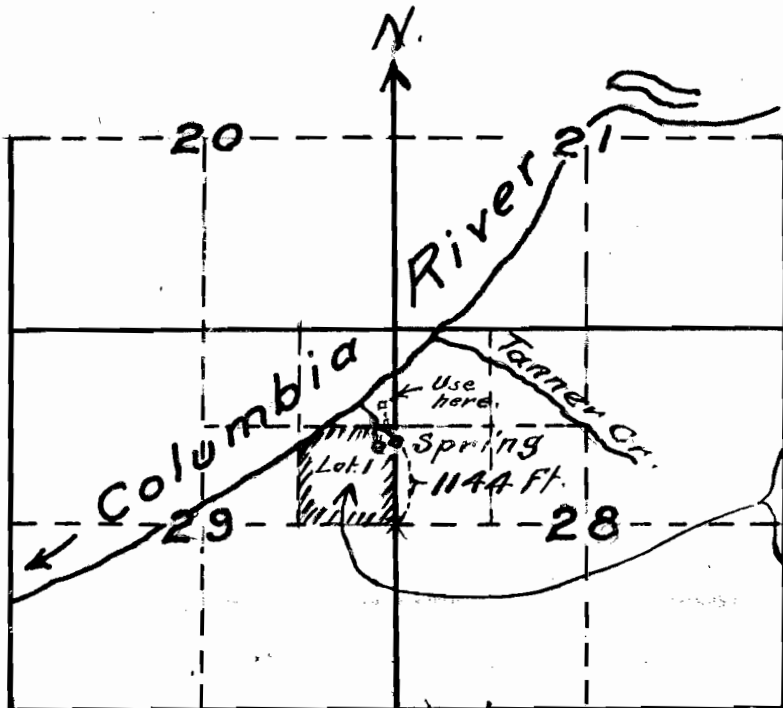
John H. Lewis.
Reg. Professional Engr.
Oreg. No. 4
Nov. 8, 1919.



Map Showing Location of Two Springs in Lot No. 1 - Tp. 2 N. R. 7 E. W. M. from which Domestic Water Supply has been appropriated as in attached application.

John H. Lewis - Engr.
Portland, Oreg. - Jan. 10-1934.

Spring - 1144 Ft. N. of $\frac{1}{4}$ Cor
Tp. 2 N. R. 7 E. W. M.



App. No. 15258
Per. No. 11179

40 Acre Tract
Leased By Erick Enquist
from Col. Riv. Packers Assn.