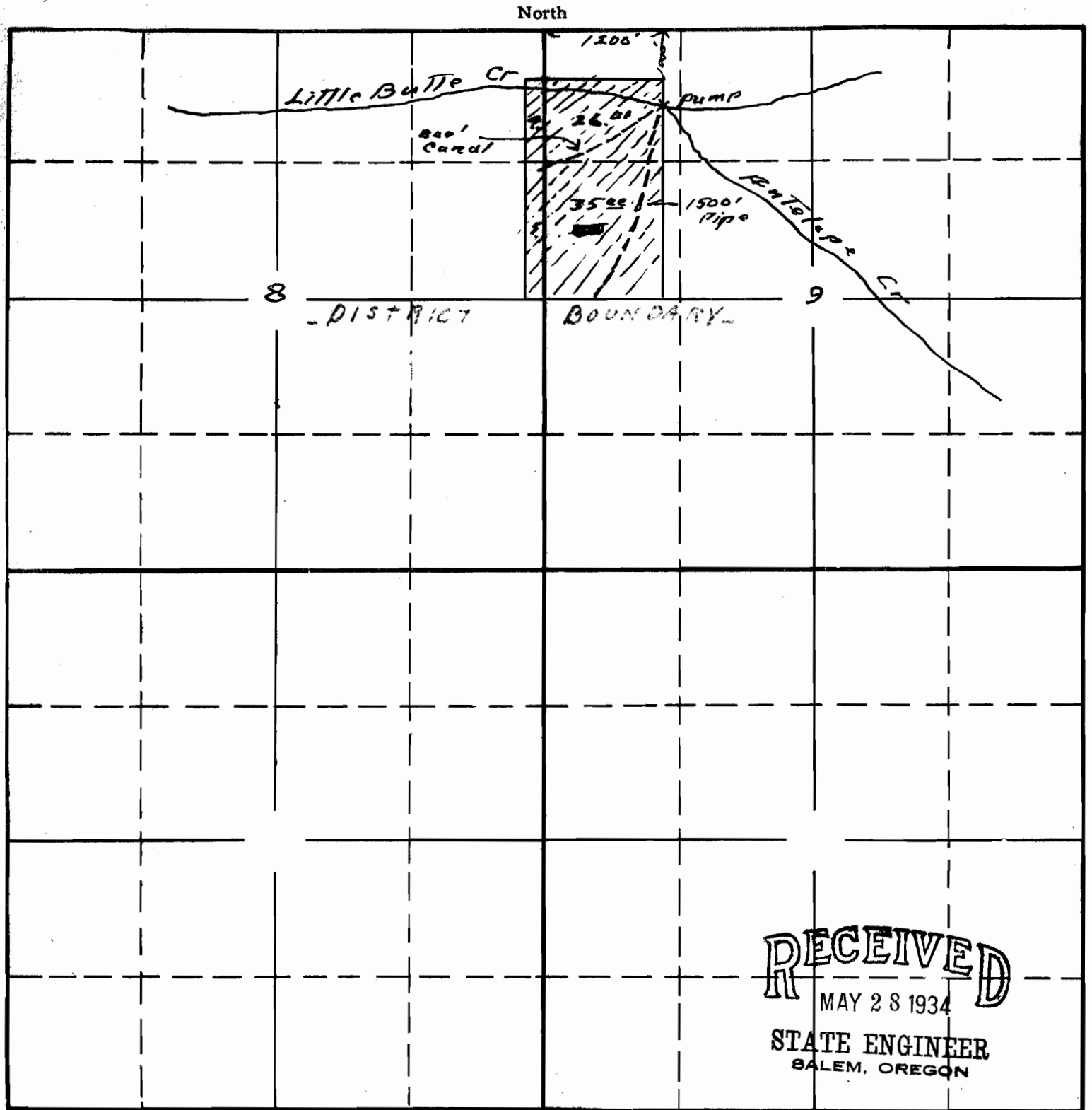


TOWNSHIP 36 S, RANGE 1 W., W. M.



RECEIVED
MAY 28 1934
STATE ENGINEER
SALEM, OREGON

Map accompanying app. of
Carl Esch for irrigation
of 70. ac, Pumping: from
Little Butte Creek

APPLICATION No. 15272
PERMIT No. 11269