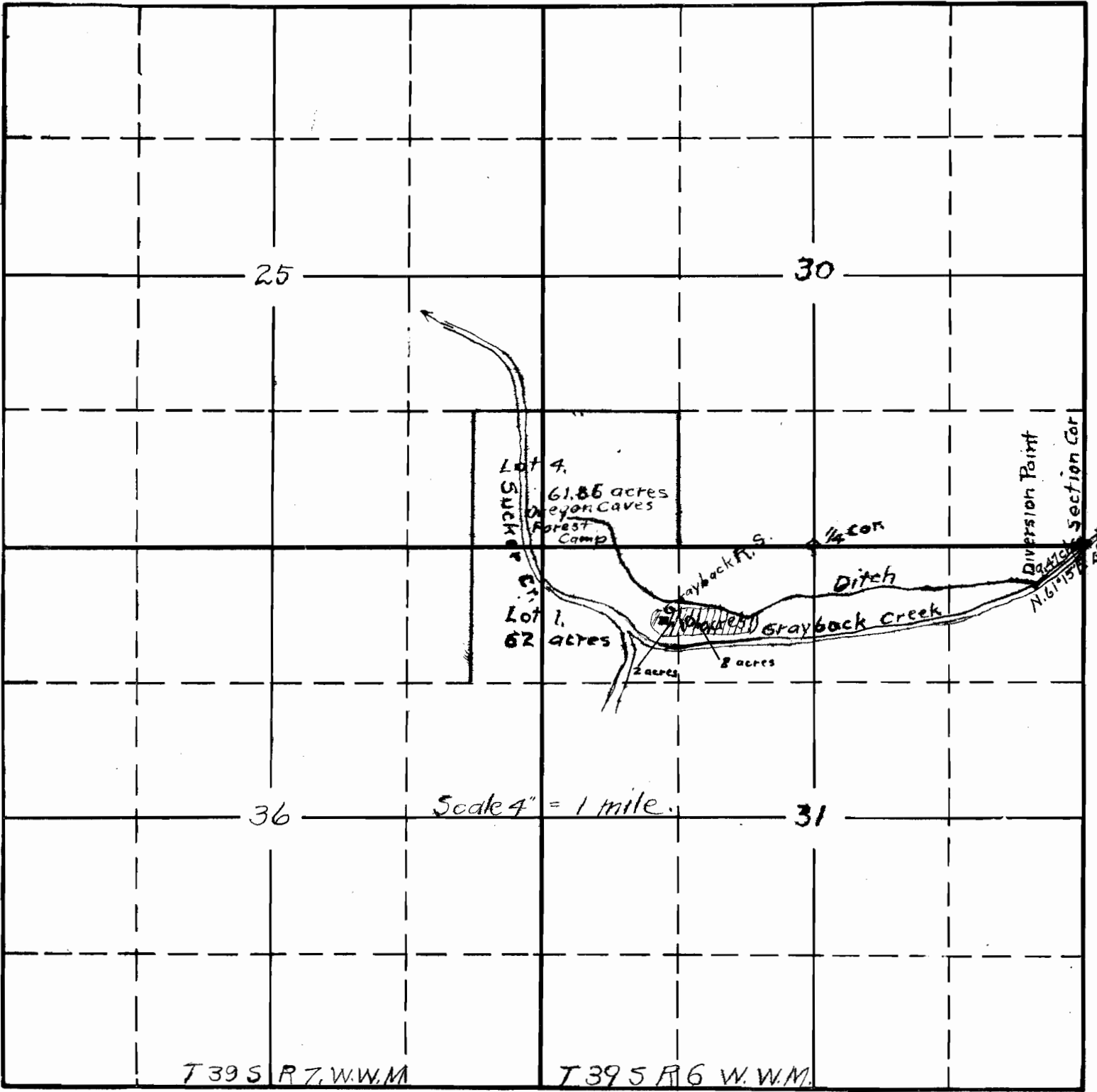


TOWNSHIP 39 S, RANGE 6 W, W. M.

North



South

RECEIVED  
OCT 24 1934

STATE ENGINEER  
SALEM, OREGON

RECEIVED  
OCT 30 1934

STATE ENGINEER  
SALEM, OREGON

APPLICATION No. 15595  
PERMIT No. 11473