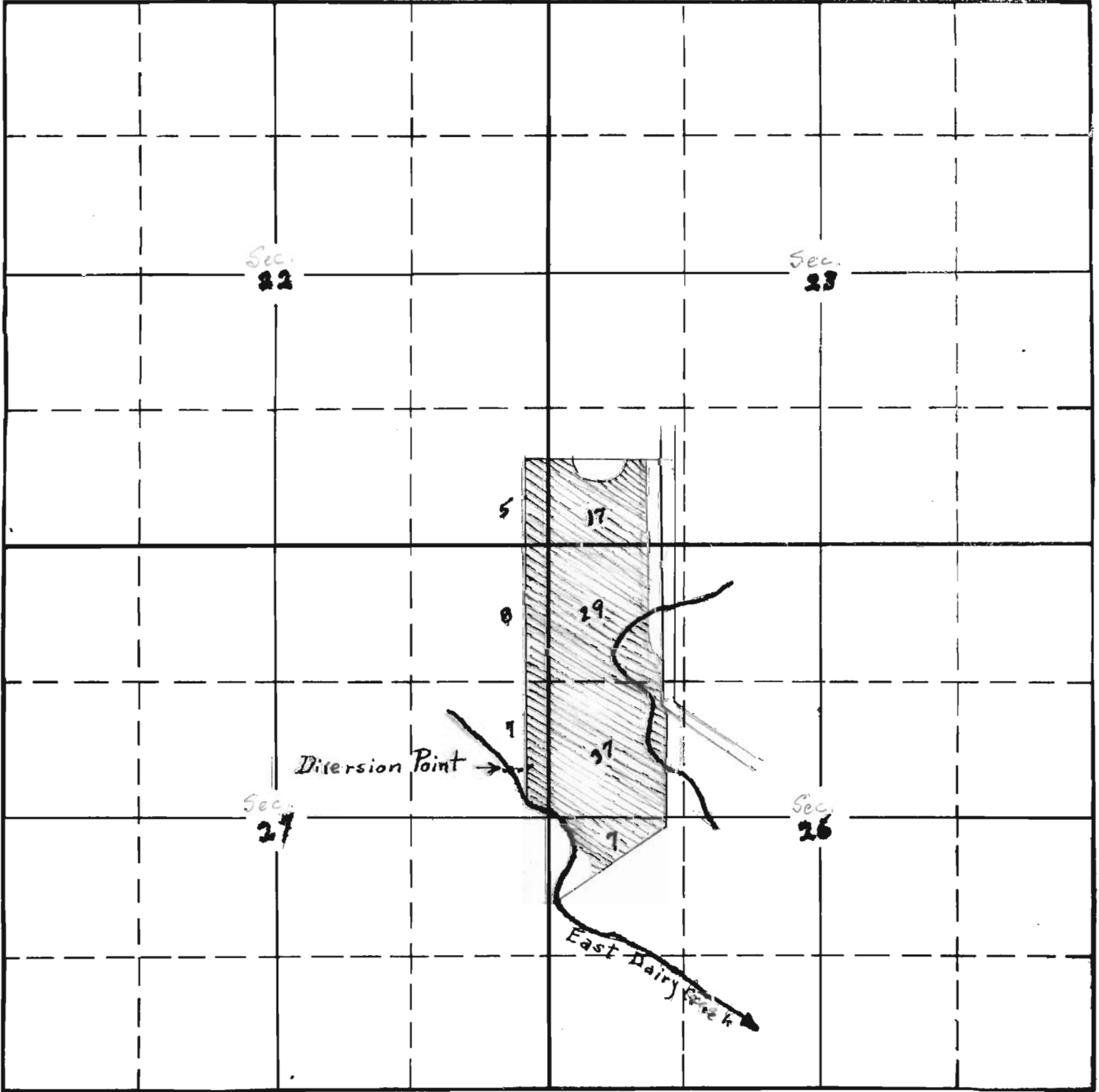


SECTION

TOWNSHIP 2 N, RANGE 3 W, W. M.

North



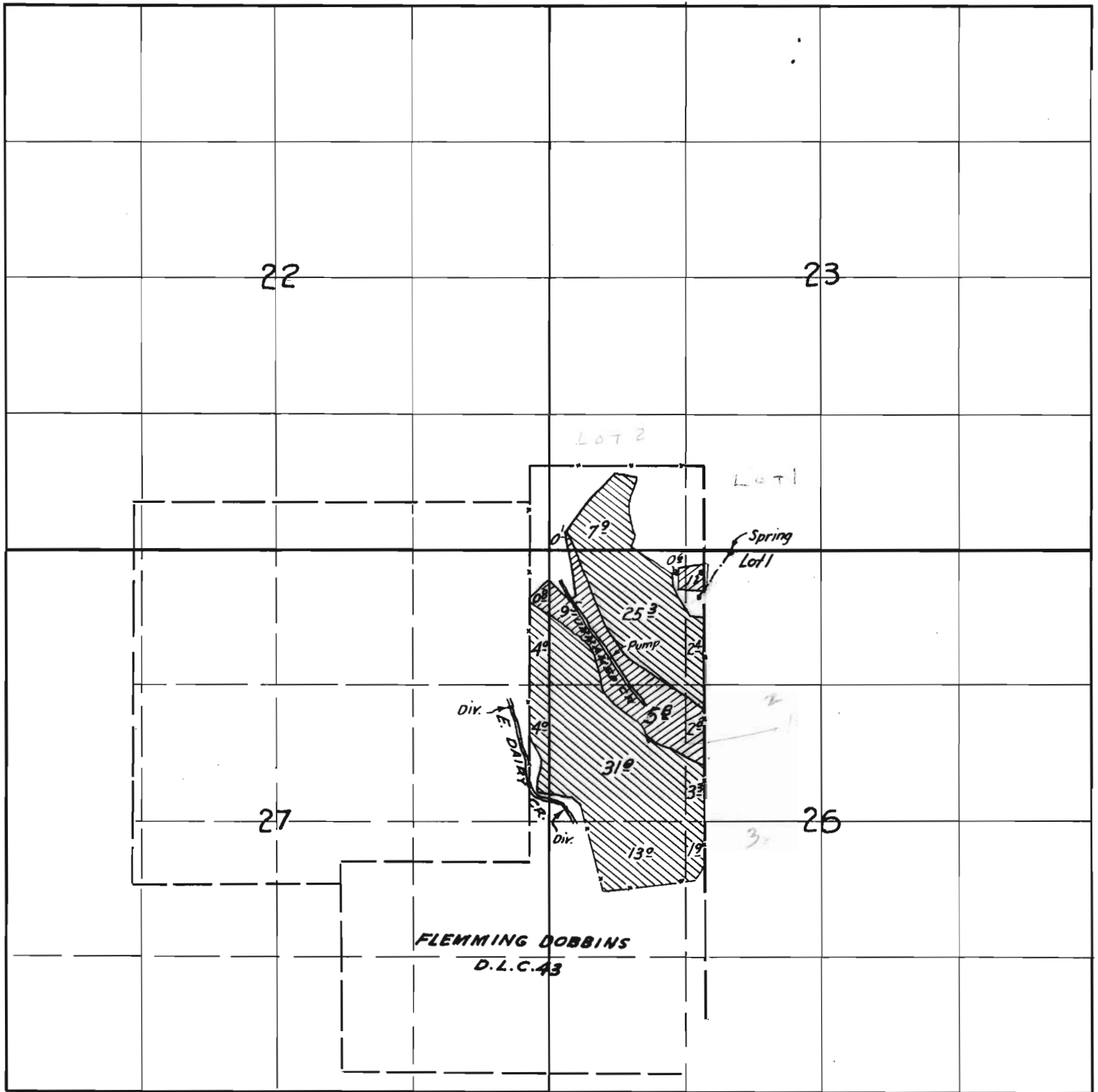
South

Scale - 1 in = 1320 feet.

2-624-15924-015
 APPLICATION No. 15924
 PERMIT No. 11773

RECEIVED
 AUG 3 1935
 STATE ENGINEER
 SALEM, OREGON

T. 2N., R. 3W.



Surveyed Aug. 16, 1941
Chester A. Cummings

17625
App. 15924
Permit 11773
13312