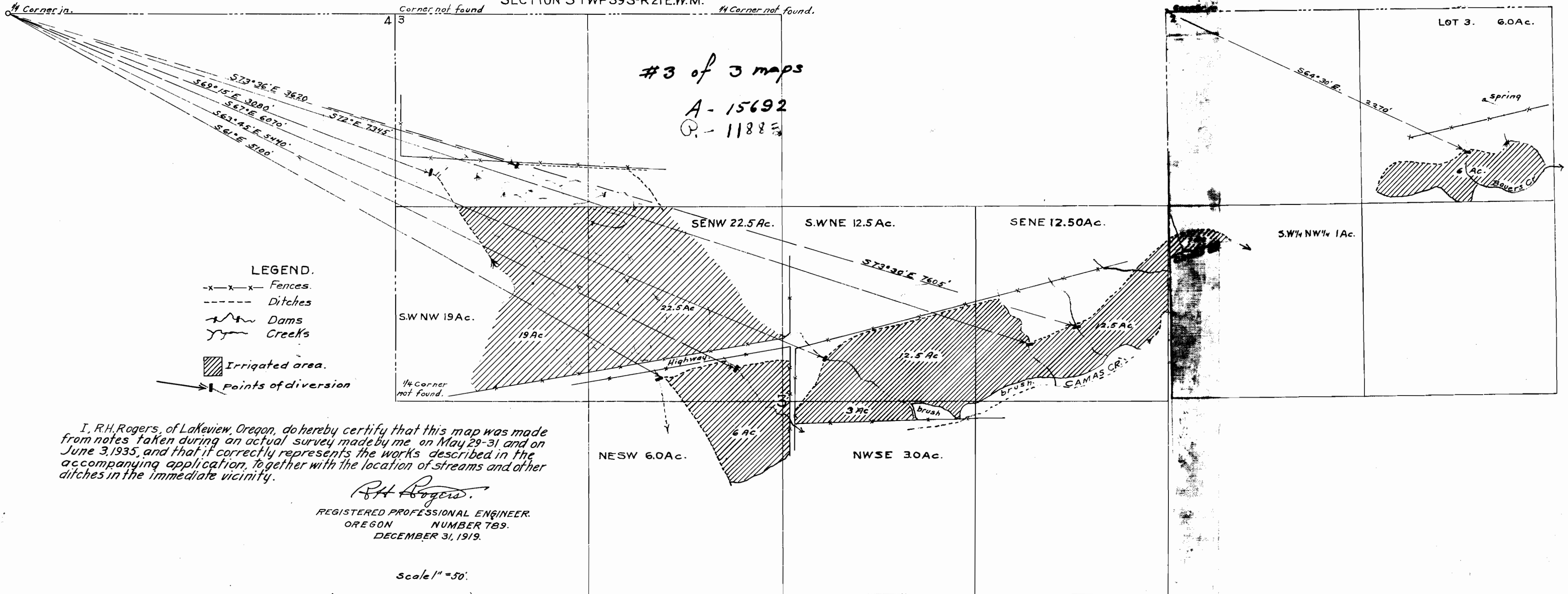


MAP

To accompany the application of Cornelius Lynch.

SECTION 3 TWP 39S-R21E.W.M.

SECTION 2 TWP 39 SR 21E.W.M.



I, R.H. Rogers, of Lakeview, Oregon, do hereby certify that this map was made from notes taken during an actual survey made by me on May 29-31 and on June 3, 1935, and that it correctly represents the works described in the accompanying application, together with the location of streams and other ditches in the immediate vicinity.

*R.H. Rogers.*  
 REGISTERED PROFESSIONAL ENGINEER.  
 OREGON NUMBER 789.  
 DECEMBER 31, 1919.

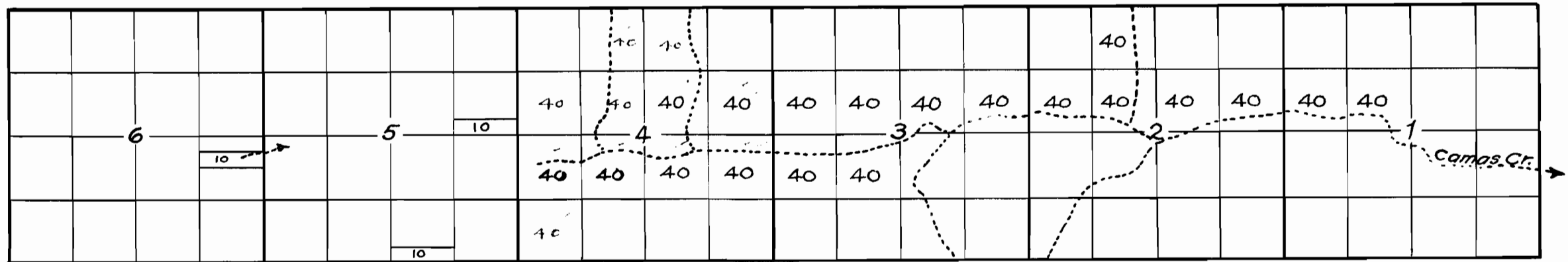
scale 1" = 50'

PLAT

To accompany the application of Cornelius Lynch  
for a permit to appropriate water.

R.H. Rogers. Lakeview, Oregon. Registered Professional Engr.  
Oregon Number 789. Date of Registration Dec 31, 1919.

TWP 39 S R 21 E.W.M.



Note: Creek location copied from the plats of the Government Survey.

Scale 2 Inches = 1 Mile.

~~15692~~

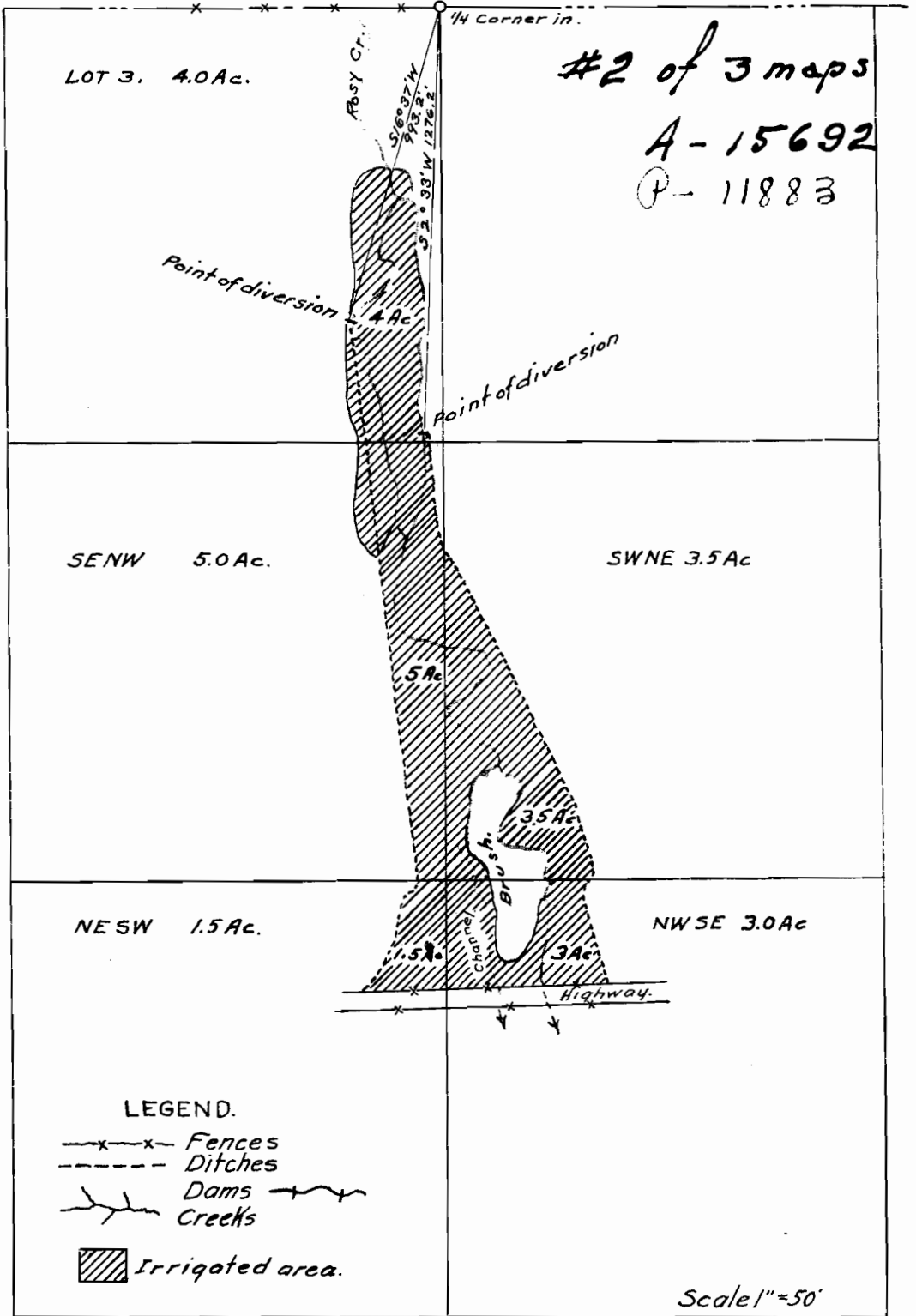
Application No. 15692

~~Approved~~

MAP

To accompany the application of Cornelius Lynch.

SECTION 4 TWP39S-R21E.W.M.



I, R.H. Rogers, of Lakeview, Oregon, do hereby certify that this map was made from notes taken during an actual survey made by me on May 25, 1935, and that it correctly represents the works described in the accompanying application together with the location of streams and other ditches in the immediate vicinity.

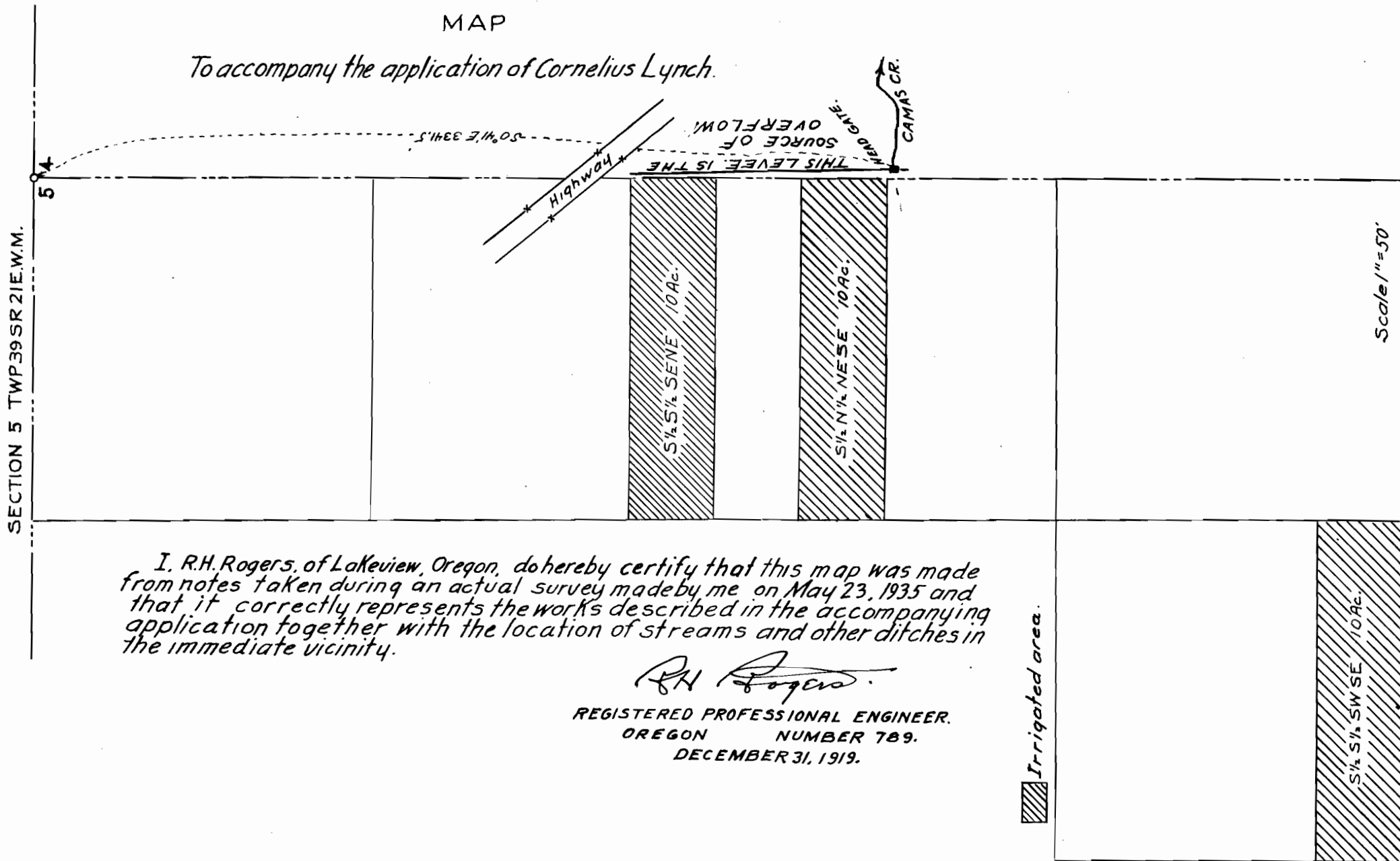
REGISTERED PROFESSIONAL ENGINEER.  
OREGON NO 789. DECEMBER 31, 1919.

R.H. Rogers

#1 of 3 maps - A-15692  
P-11883

MAP

To accompany the application of Cornelius Lynch.



I, R.H. Rogers, of Lakeview, Oregon, do hereby certify that this map was made from notes taken during an actual survey made by me on May 23, 1935 and that it correctly represents the works described in the accompanying application together with the location of streams and other ditches in the immediate vicinity.

*R.H. Rogers*

REGISTERED PROFESSIONAL ENGINEER,  
OREGON NUMBER 789.  
DECEMBER 31, 1919.

Irrigated area.

S 1/2 S 1/2 SW SE 10 AC.