

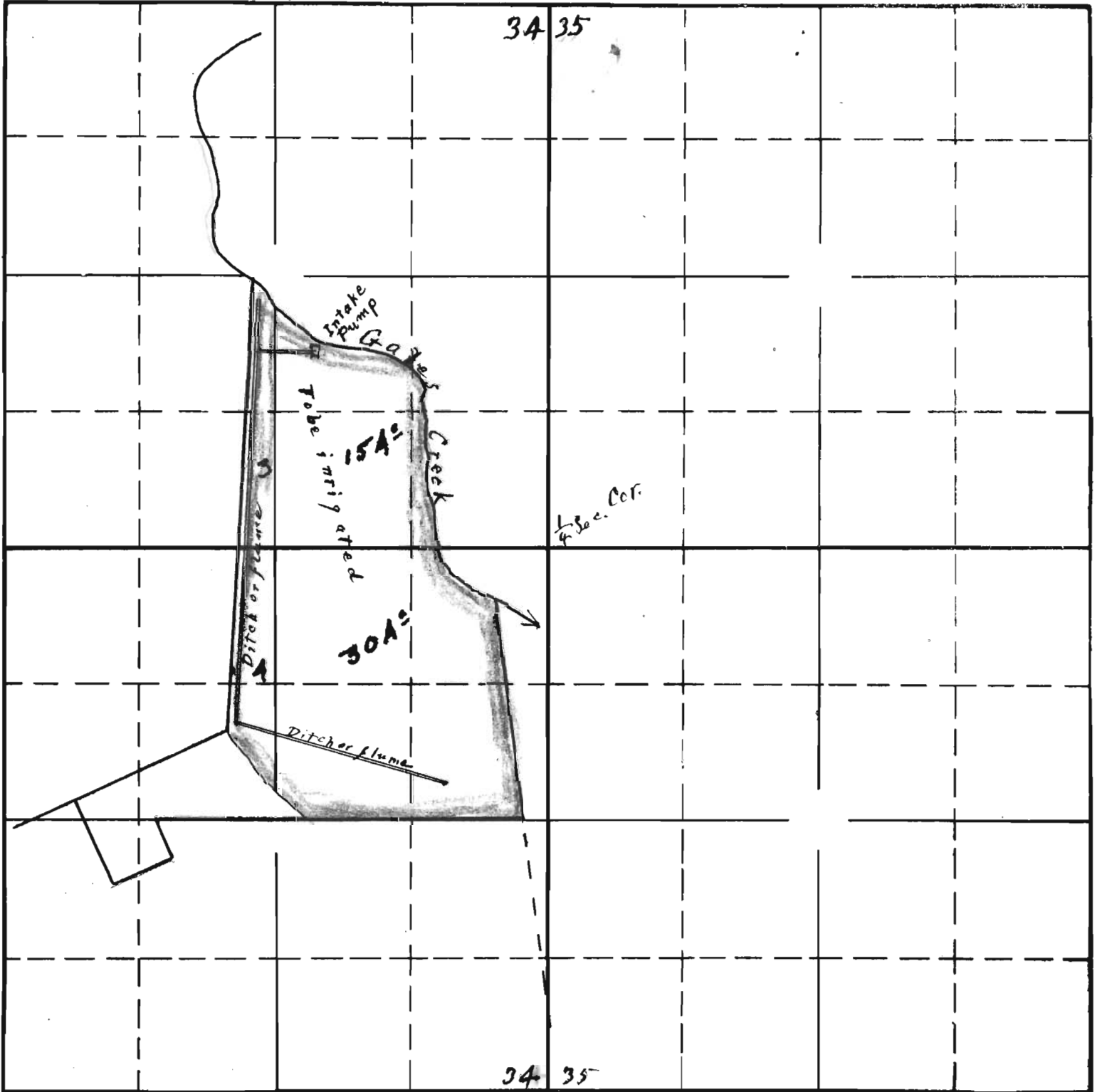
SECTION 34

T1N.  
R4W.

TOWNSHIP 1 N., RANGE 4 W., W. M.

Scale 10 chs. (660 ft.) to 1 inch

North



South

RECEIVED  
OCT 22 1935

STATE ENGINEER  
SALEM, OREGON

2-624-16108-M  
APPLICATION No. 16108  
PERMIT No. 11925

