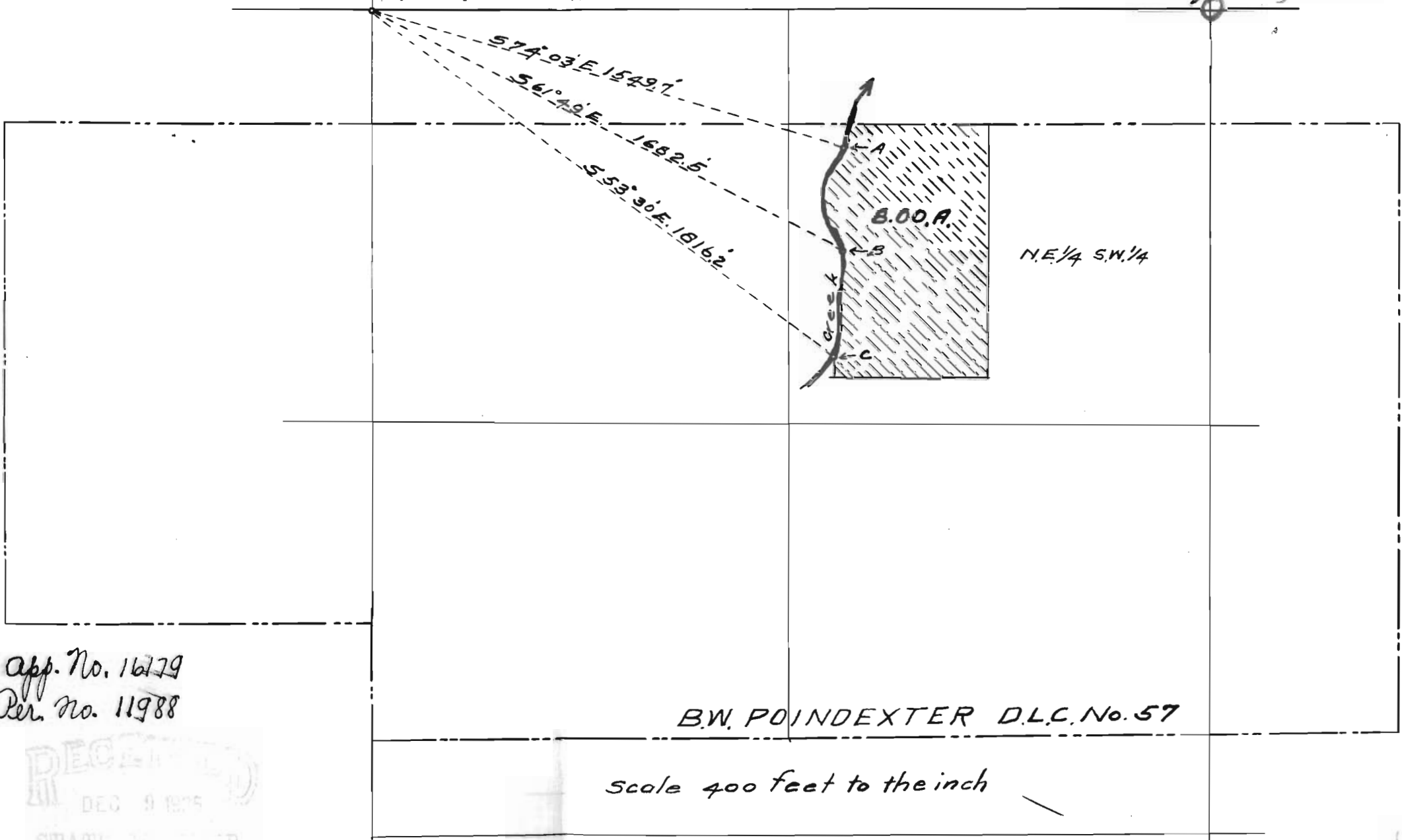


Tp. 17 S. R. 4 W.

1/4 SEC. COR.  
bet. Secs. 1 & 2  
TP 17 S. R. 4 W. WM.

Center of  
Section 1



App. No. 16179  
Per. No. 11988

B.W. POINDEXTER D.L.C. No. 57

Scale 400 feet to the inch

RECEIVED  
DEC 9 1975  
STATE ENGINEER  
SALEM, OREGON

OK  
2-76B-16179