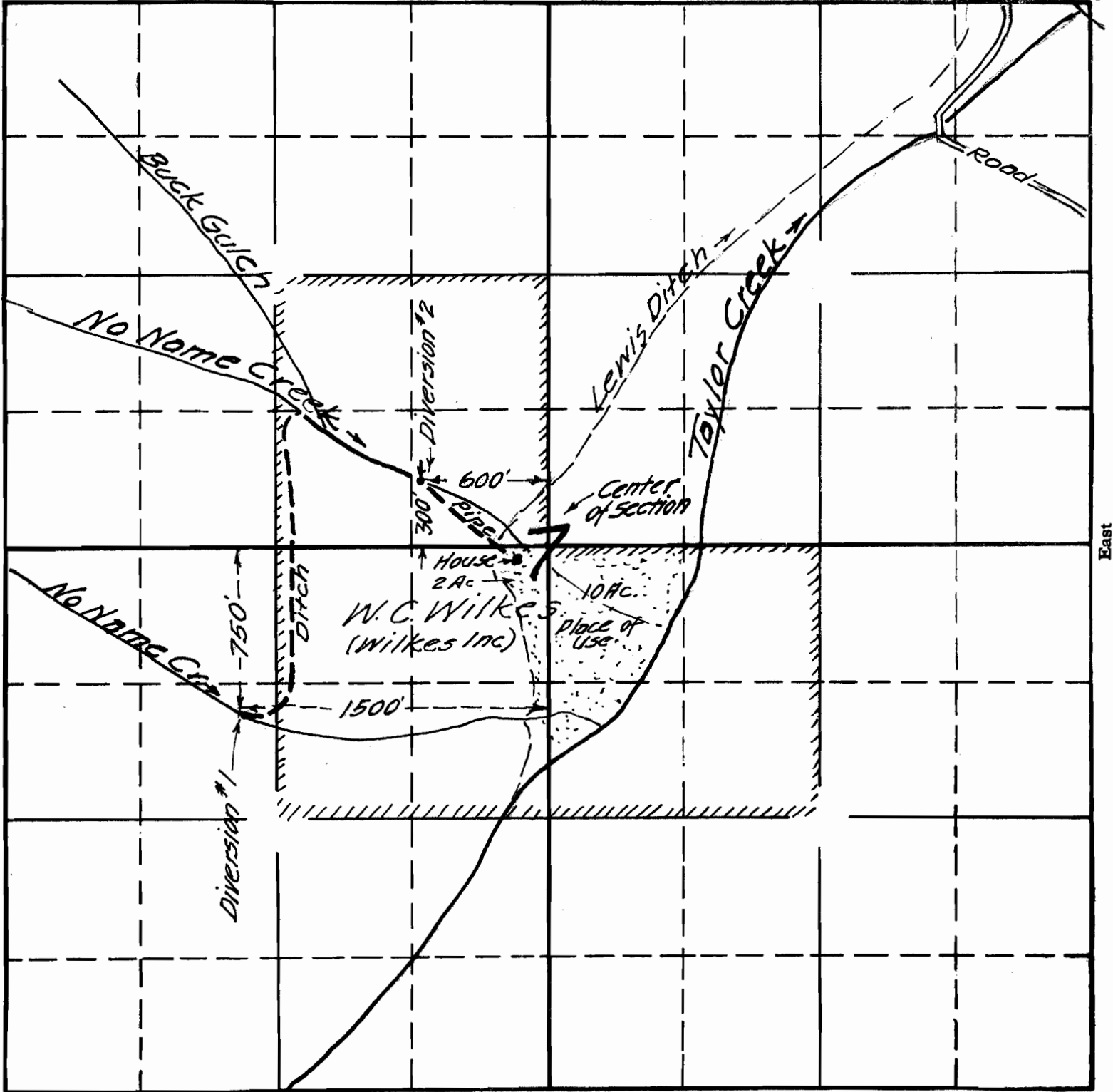


SECTION

TOWNSHIP 35 S, RANGE 7 W., W. M.

North

ROCK RIVER



South

Scale 8" = 1 Mile
May 1936

APPLICATION No. 16382

PERMIT No. 12185

RECEIVED
 MAY 10 1936
 DIVISION OF
 CONSERVATION
 DEPARTMENT OF
 NATURAL RESOURCES
 STATE OF IOWA