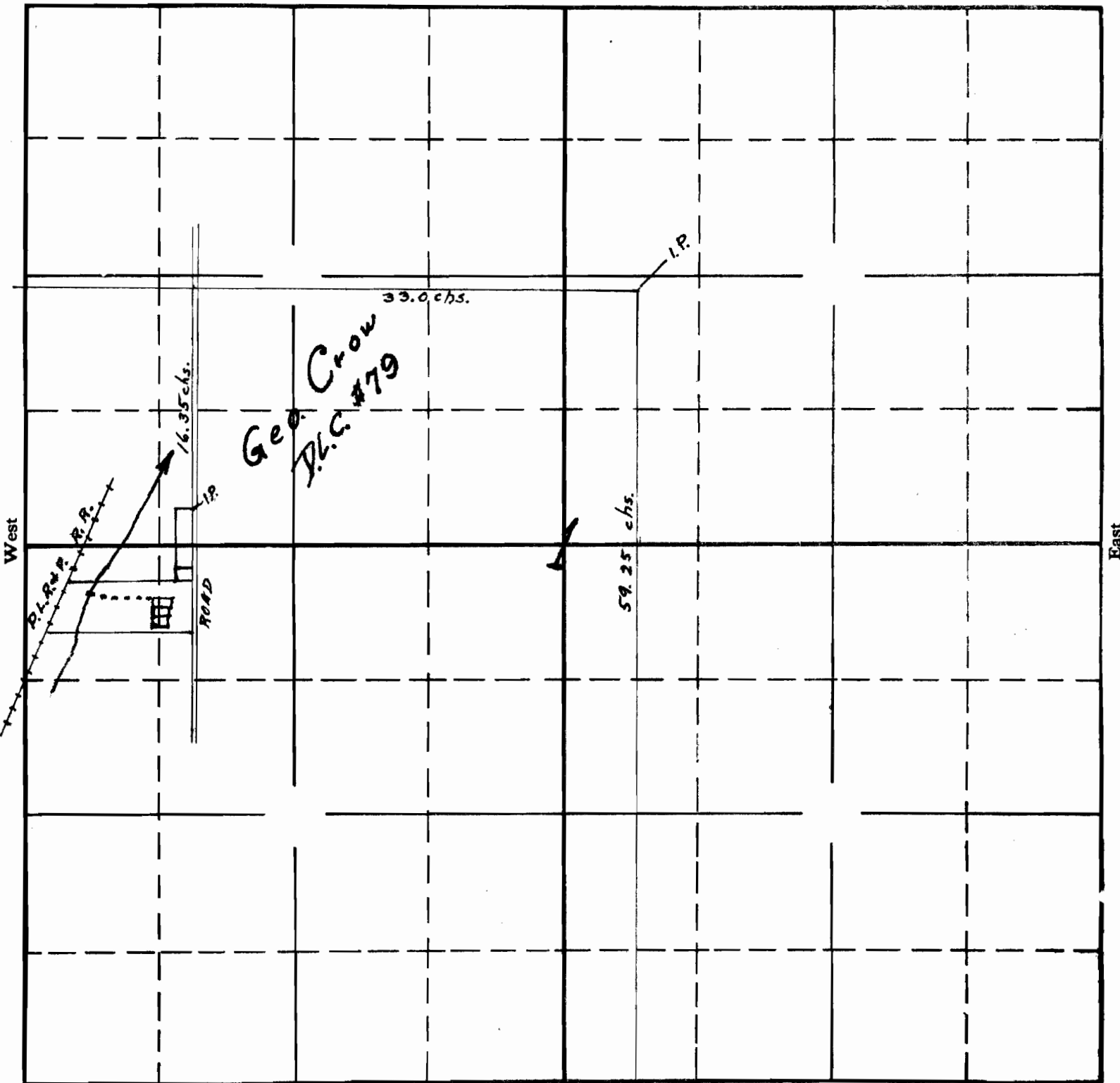


SECTION

1

TOWNSHIP 25 , RANGE 1E , W. M.

North



West

East

South

2-76-16376
 APPLICATION No. 16376
 PERMIT No. 12214

Super Highway.

County road

brook.

Oregon City bar here

Tonbank

Oak Grove

River road.

Super

AMITA

LEVINZ AND PETERVILLE
Architects, Counselors of

W. W. HEINING

SYDNEY

AMSTERDAM

LEVINZ

LEVINZ

LEVINZ

LEVINZ

LEVINZ

LEVINZ