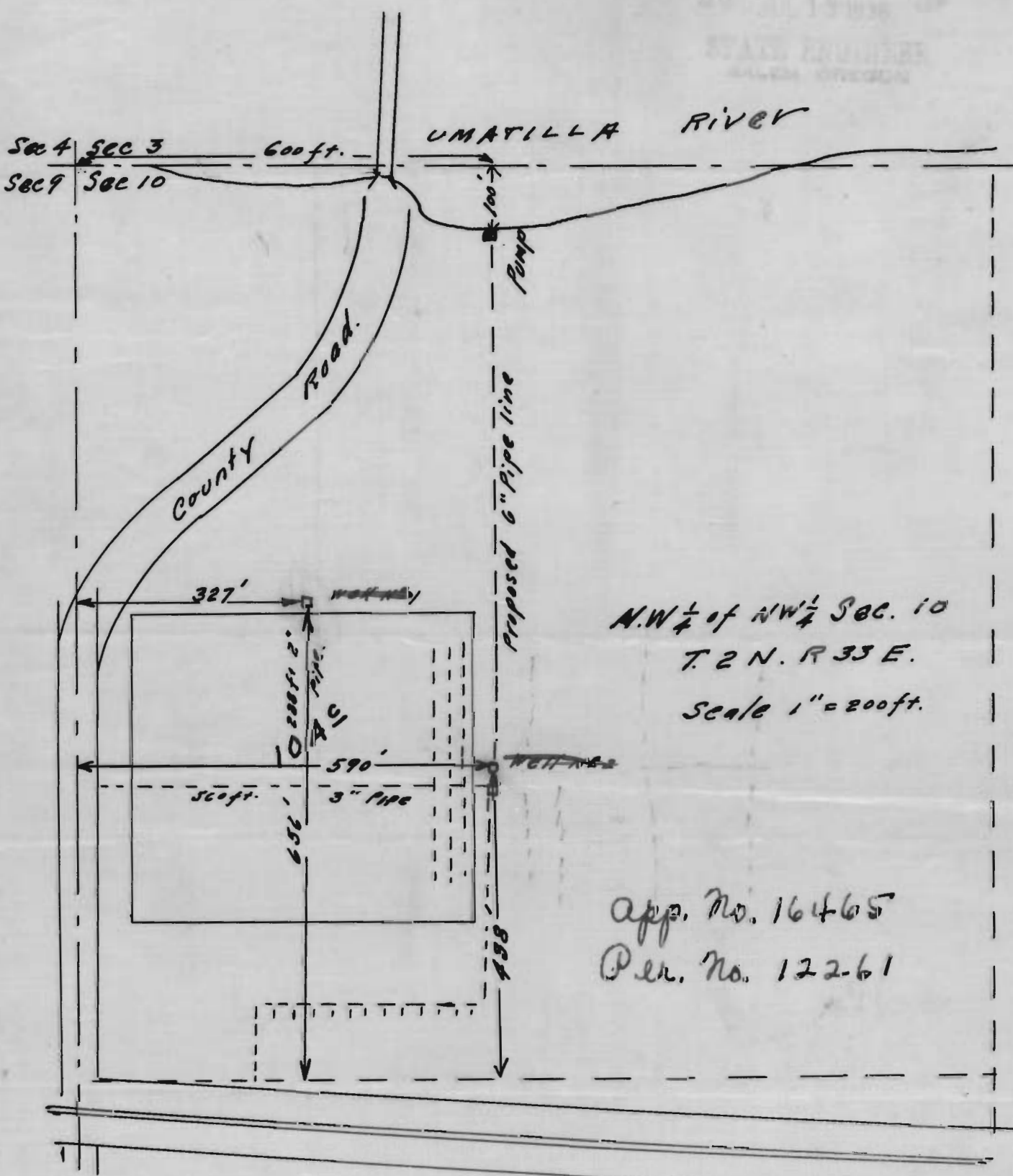


RECEIVED
 JUL 13 1966
 STATE ENGINEER
 SALMON DIVISION



N.W. $\frac{1}{4}$ of N.W. $\frac{1}{4}$ Sec. 10
 T. 2 N. R. 33 E.
 Scale 1" = 200ft.

App. No. 16465
 Per. No. 122-61

MAP
 TO
 Accompany permit of
 Oregon Game Commission

7-13-16465-OR