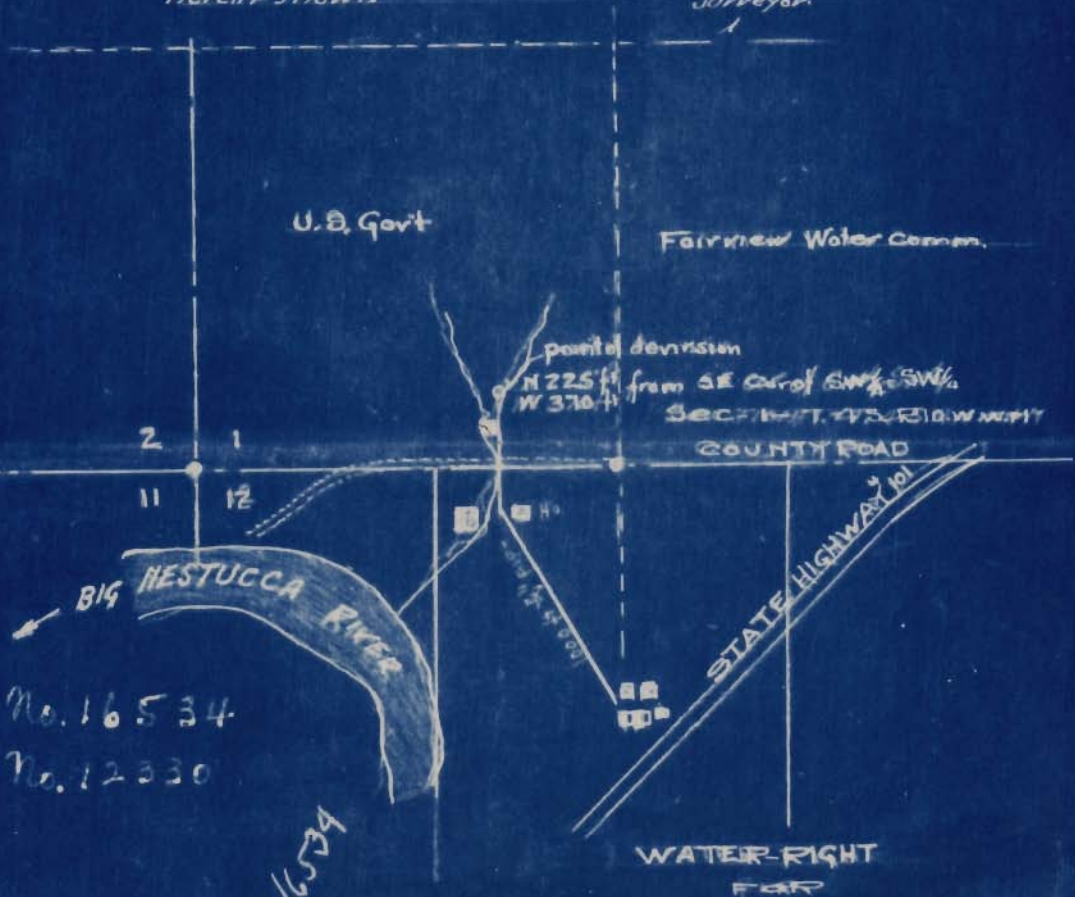


# SURVEYORS CERTIFICATE

L. W. E. Anderson of Tillamook, Oregon do hereby certify that this map was made from notes taken during an actual survey made by me in August 1936, and that it correctly represents the work herein shown.

L. W. E. Anderson  
Surveyor



App. No. 16534  
Per. No. 12330

1-16A-16534  
ap

THE FIRST NATIONAL BANK OF TILLAMOOK  
Located in sections 1-12 T. 4 S. R. 10 W. W. 11  
Tillamook County, Oregon  
Scale 1" = 600'

L. W. E. Anderson