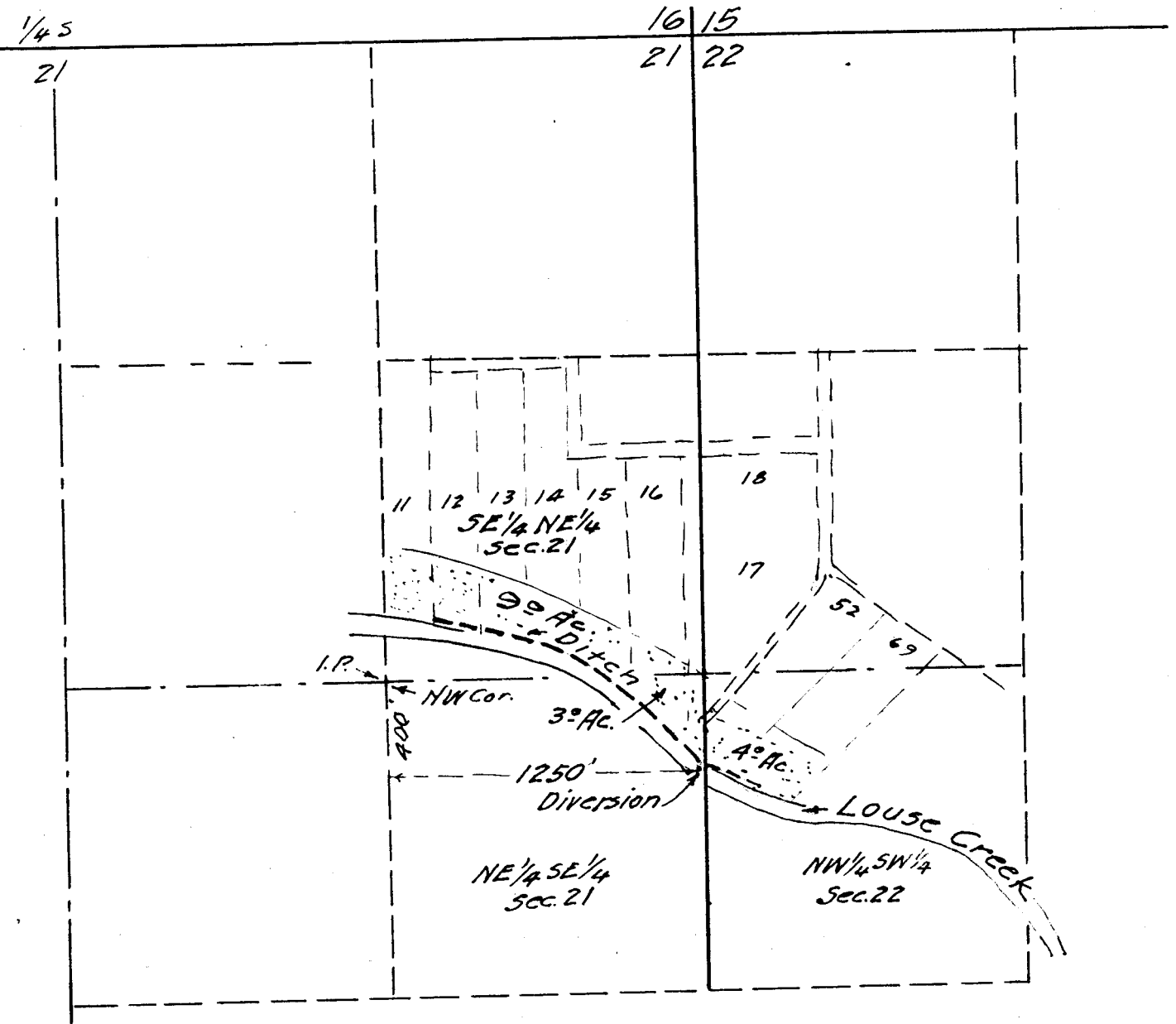


Permit: S 12332  
Volume: 5  
Strm: LOUSE CR  
Trib: JUMPOFF JOE CR  
Priority: 8/24/36

T. 35 S, R. 6 W, 1  
Scale 8" = 1 Mile



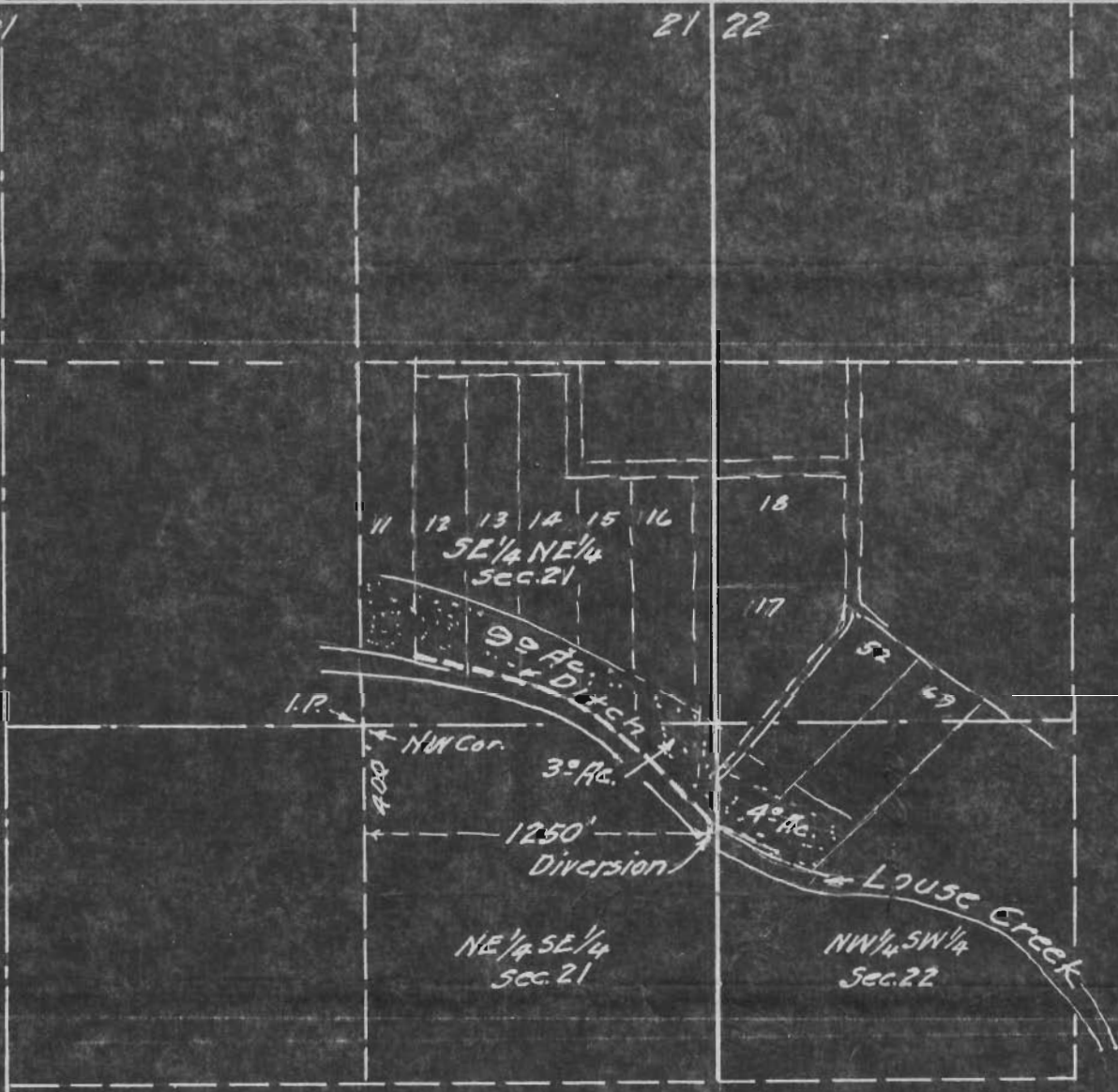
M. L. Holbrook  
Aug 1936

App. No. 16538  
Per. No. 12332

T. 35 S., R. 6 W., W. M.  
Scale 8" = 1 Mile

1/4 5  
21

16 15  
21 22



M. L. Holbrook  
Aug 1936

App. No. 16538  
Per. No. 12332