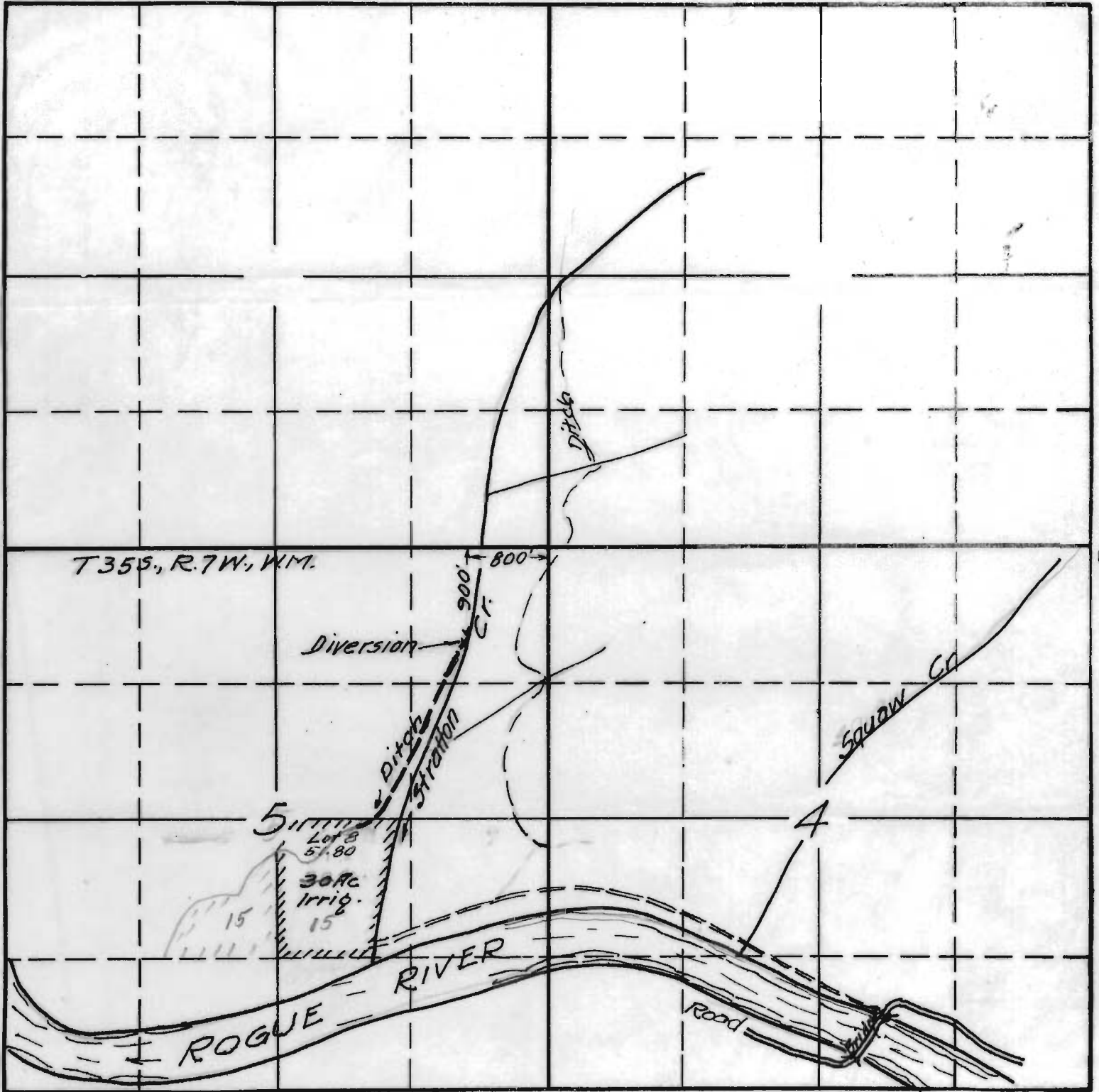


SECTION

TOWNSHIP 35 S., RANGE 7 W., W. M.

North



T35S, R.7W, W.M.

Diversions

900
C.F.

Ditch
Station

5
Lot 8
51.80
30 Ac.
Irrig.
15
15

Squaw Cr.

4

ROGUE RIVER

Road

South

RECEIVED
OCT 2 1936

Oct. 1936

15-74-16839-OK
APPLICATION No. 16639
PERMIT No. 12414