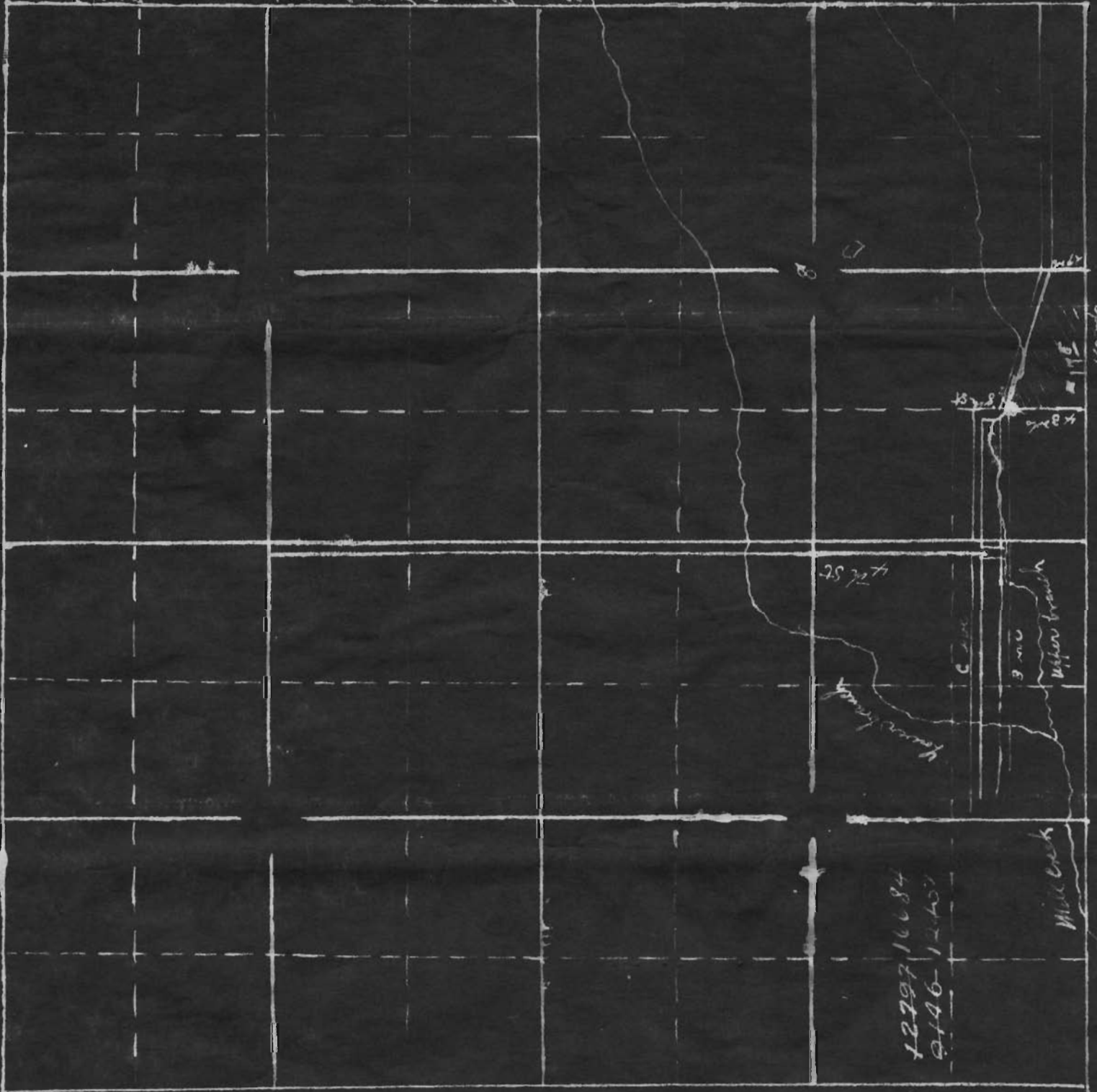


Sec 8  
 Beginning at  
 the S.E. corner  
 of the S.E. 1/4 of Sec 8  
 of Sec 8.

Tk. 3 S.  
 R. 38  
 E. 1/4 M.

running  
 from the  
 N. 29 rods  
 to the center  
 of the county  
 road, thence  
 N. by N. along the  
 center of the  
 county road  
 to the intersection  
 of the S.E. 1/4 of Sec 8  
 & Sec. 8. 43 rods  
 thence S. 43 rods  
 to S.W. corner  
 of S.E. 1/4 of Sec 8  
 of Sec 8.

thence east  
 along section  
 line 80 rods  
 to the place  
 of beginning  
 containing  
 17 1/2 acres less  
 minor loss



The red lines are  
 the corners of the  
 section.

The upper dimension  
 is about 340 ft. from  
 the corner of the  
 land to be surveyed.

The lower dimension  
 is about 68 ft. S.E.  
 from N.W. corner  
 of section 8, and  
 the irregularity  
 of the road.

The red dot. The  
 N.W. corner of Sec. 8  
 land to be surveyed.

The black square  
 is on the land to  
 be surveyed.

Boundary  
 43 rods on N.  
 80 rods on S.  
 29 rods on E.  
 County road N.

12797-1684  
 946-1240