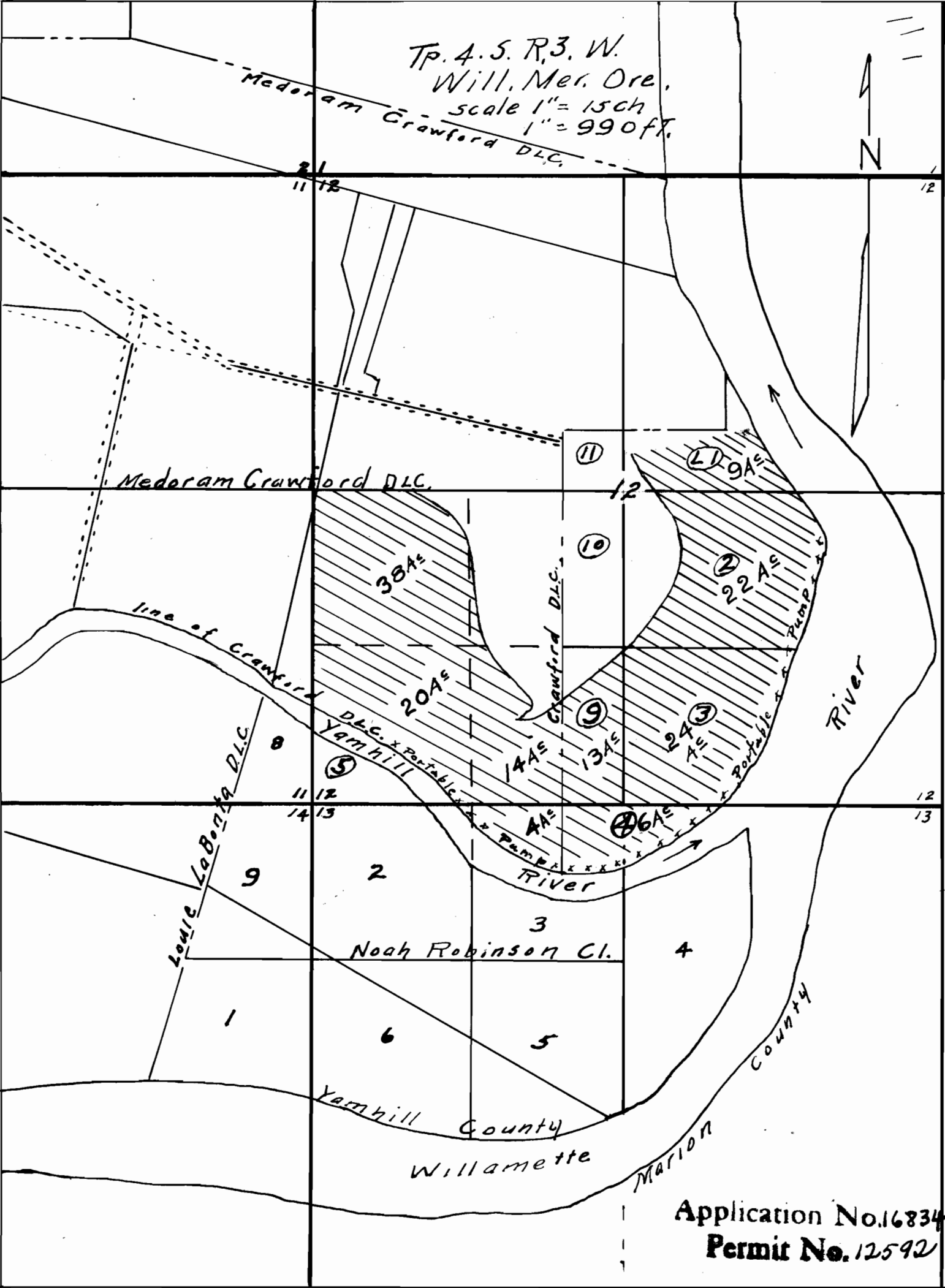


TP. 4. S. R. 3. W.
Will. Mer. Ore.
scale 1" = 15 ch
1" = 990 ft.



Medoram Crawford DLC.

line of Crawford DLC.

Louie LaBonta DLC.

Noah Robinson Cl.

Yamhill County

Willamette

Marion County

River

Application No. 16834
Permit No. 12592