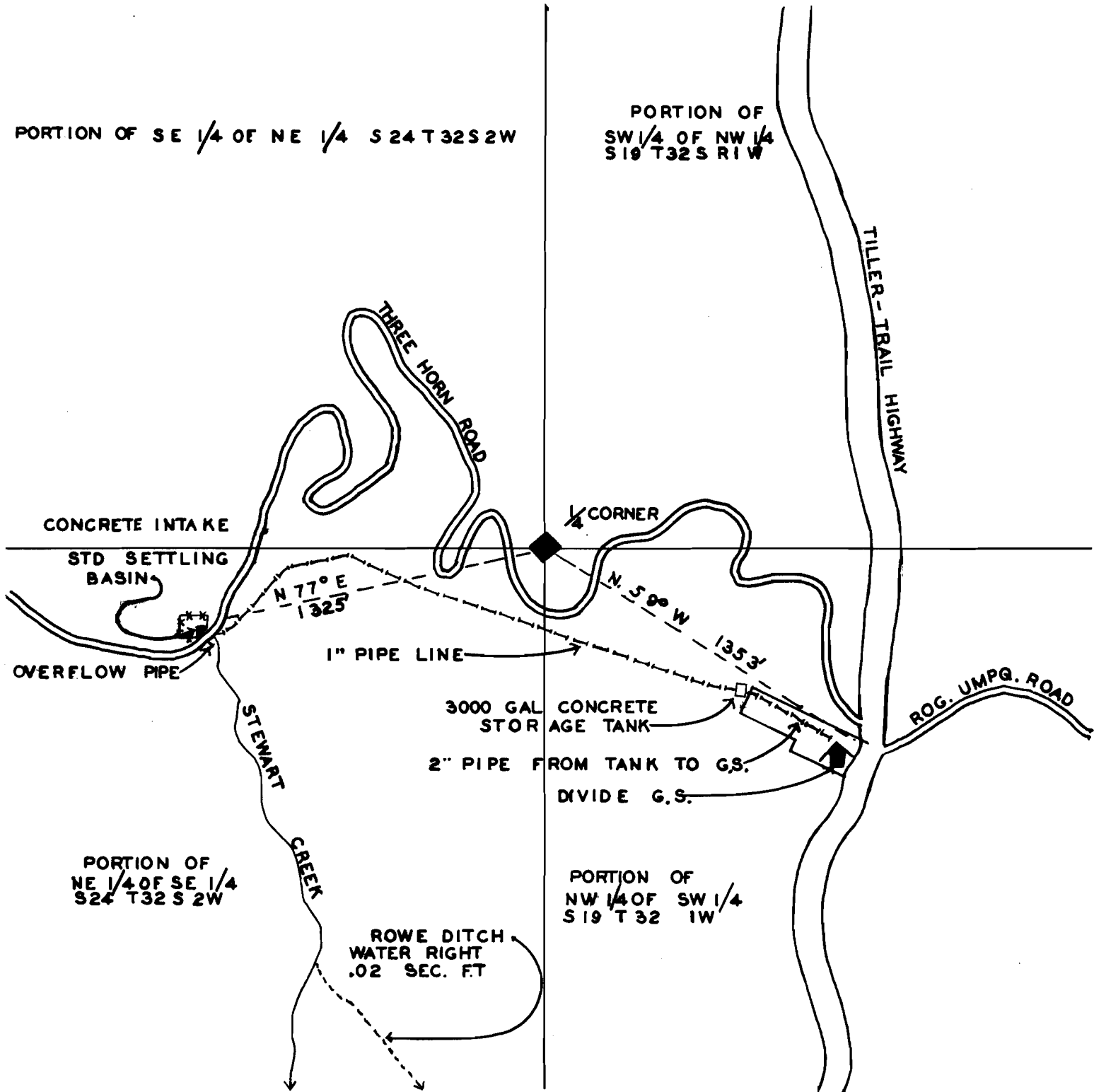


PORTION OF SE 1/4 OF NE 1/4 S 24 T 32 S 2 W

PORTION OF SW 1/4 OF NW 1/4 S 19 T 32 S R 1 W



PORTION OF NE 1/4 OF SE 1/4 S 24 T 32 S 2 W

PORTION OF NW 1/4 OF SW 1/4 S 19 T 32 R 1 W

ROWE DITCH
WATER RIGHT
.02 SEC. FT

Application No. 16822

Permit No. 12650

ROGUE RIVER NF
TO ACCOMPANY APPL FOR DIVIDE
GUARD STATION WATER RIGHT

MAPPED BY J.P. DEWITT 2/10/37
SCALE 1" = 500"

1

15-74-16822