

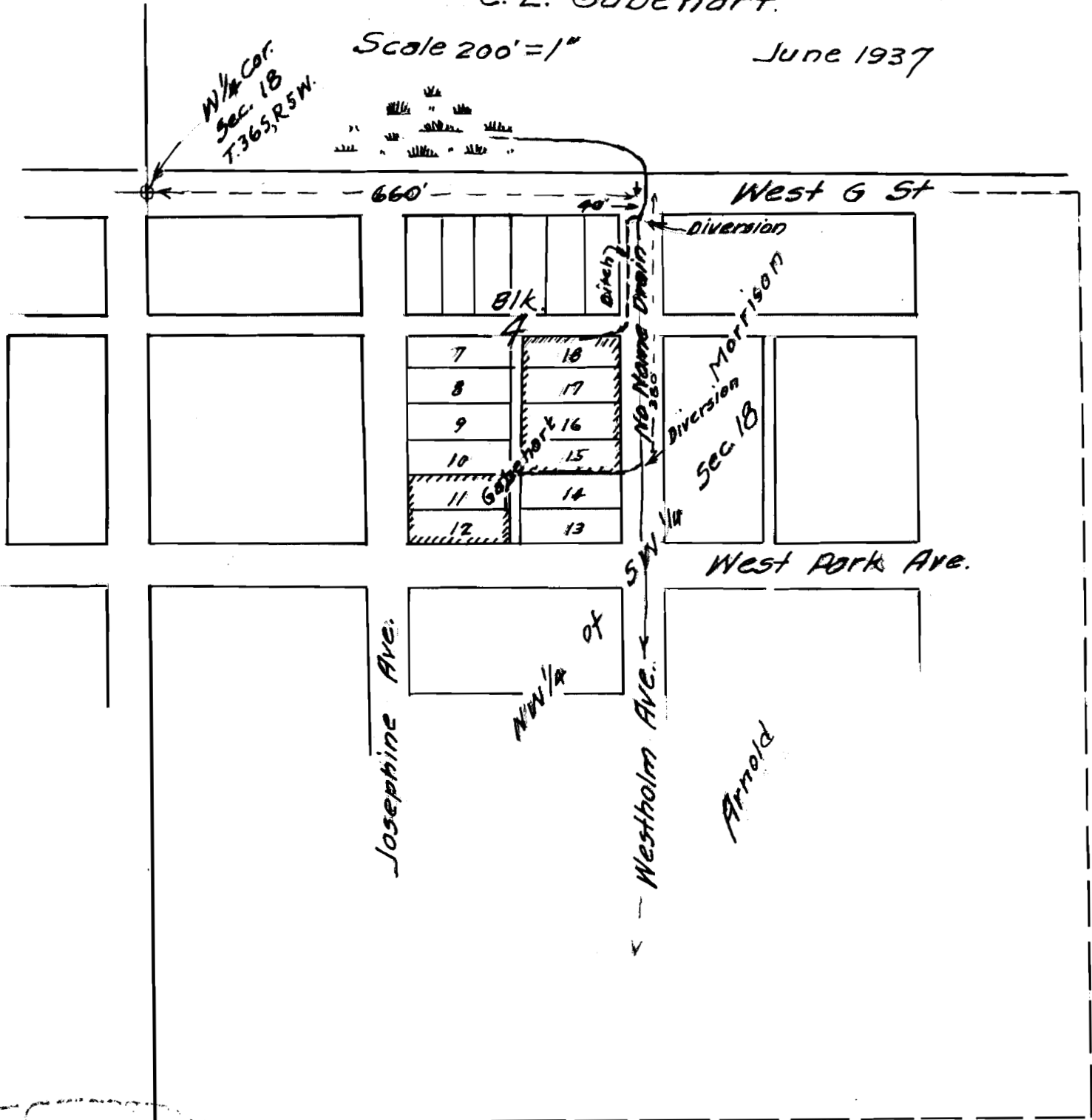
T. 36 S., R. 5 W., W.M.

C. L. Gabehart.

Scale 200' = 1"

June 1937

W 1/4 Cor.
Sec. 18
T. 36 S., R. 5 W.



JUN 1 1937
 STATE ENGINEERS
 DEPT. OF TRANSPORTATION
 DIVISION OF HIGHWAYS

Application No 16919

Permit No. 12677

15-74-16919-21