

SECTION

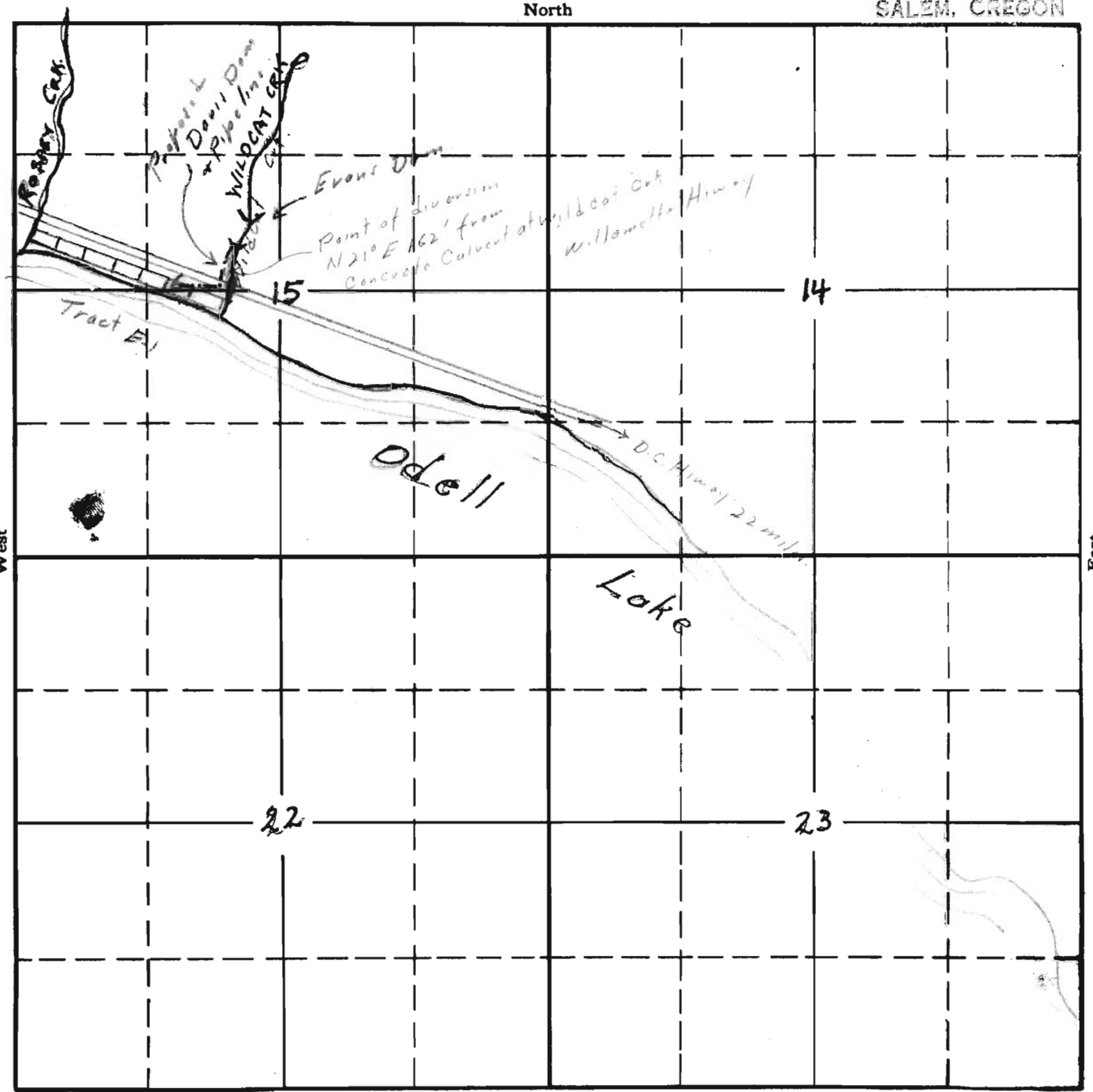
Howe NW, SE 1/4 NW 4
S. 15
Lot #6
Tract E-1

Corrected by L.V. Hunter

TOWNSHIP 23S, RANGE 6E, W. M.

RECEIVED
SEP 25 1937
STATE ENGINEER
SALEM, OREGON

North



South

RECEIVED
JUN 13 1936
STATE ENGINEER
SALEM, OREGON

RECEIVED
SEP 16 1937
STATE ENGINEER
SALEM, OREGON

APPLICATION No. 17096
PERMIT No. 12770