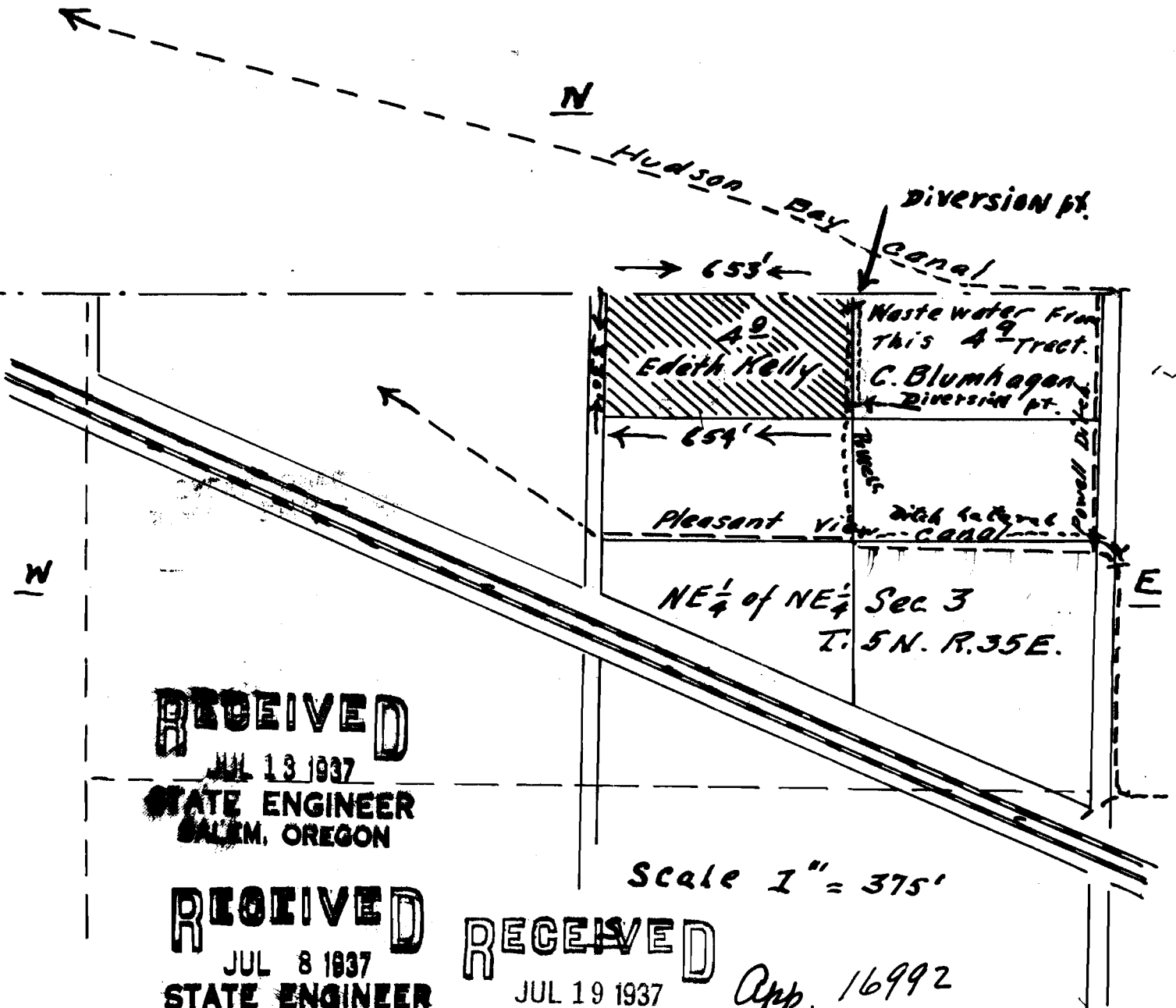


MAP To Accompany
Permit
of
Edith. Kelly.



RECEIVED

JUL 13 1937

STATE ENGINEER
SALEM, OREGON

RECEIVED

JUL 8 1937

STATE ENGINEER
SALEM, OREGON

RECEIVED

JUL 19 1937

STATE ENGINEER
SALEM, OREGON

Scale 1" = 375'

App. 16992

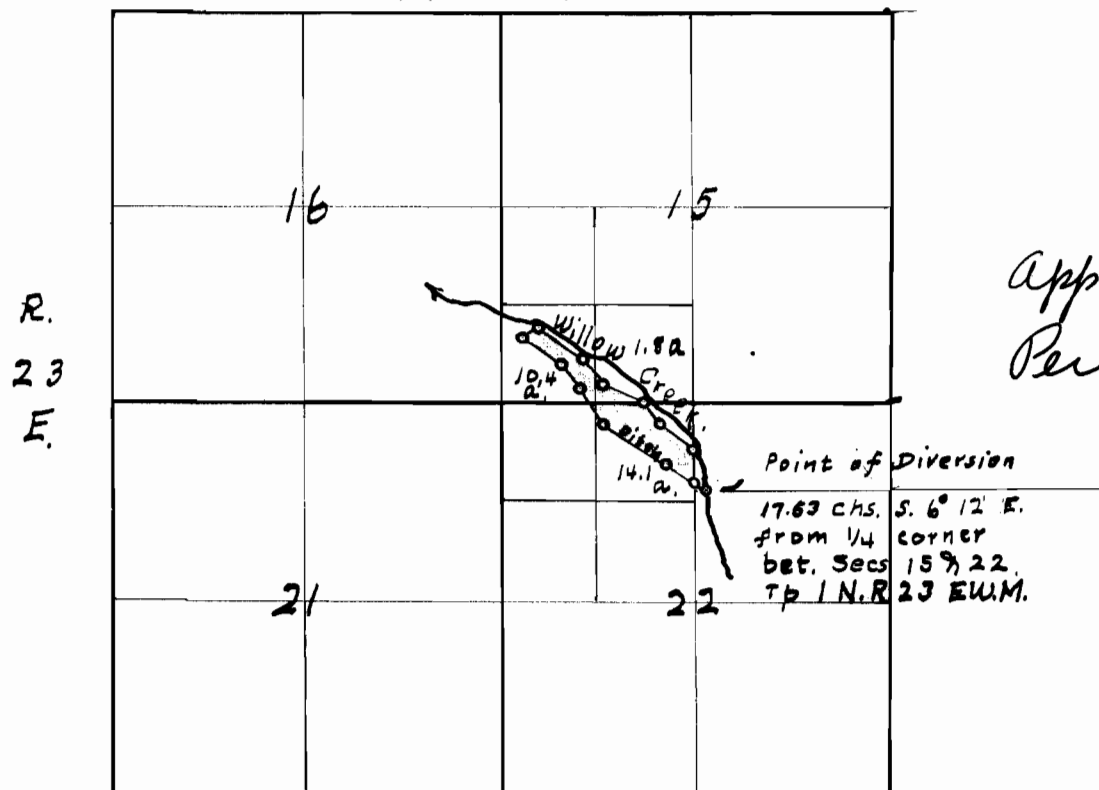
Per. 12905

Map of THE WHITCOMB COMPANY'S

Irrigable Land on Willow Creek

Morrow Co. Oregon.

Tp 1 N



App. 16992
Per 12905

I, D. V. S. Reid, County Surveyor of Morrow County Oregon, do hereby certify that this map was made from notes taken during an actual survey made by ^{me} July 1, 1910, and that it correctly represents the works described in the accompanying application, together with the location of streams and other ditches in the immediate vicinity, and has written thereon the area in each smallest subdivision which it is proposed to irrigate.

D. V. S. Reid
Surveyor.

Subscribed and sworn to before me this 9th day of July 1910.

H. O. Hill

County Clerk.