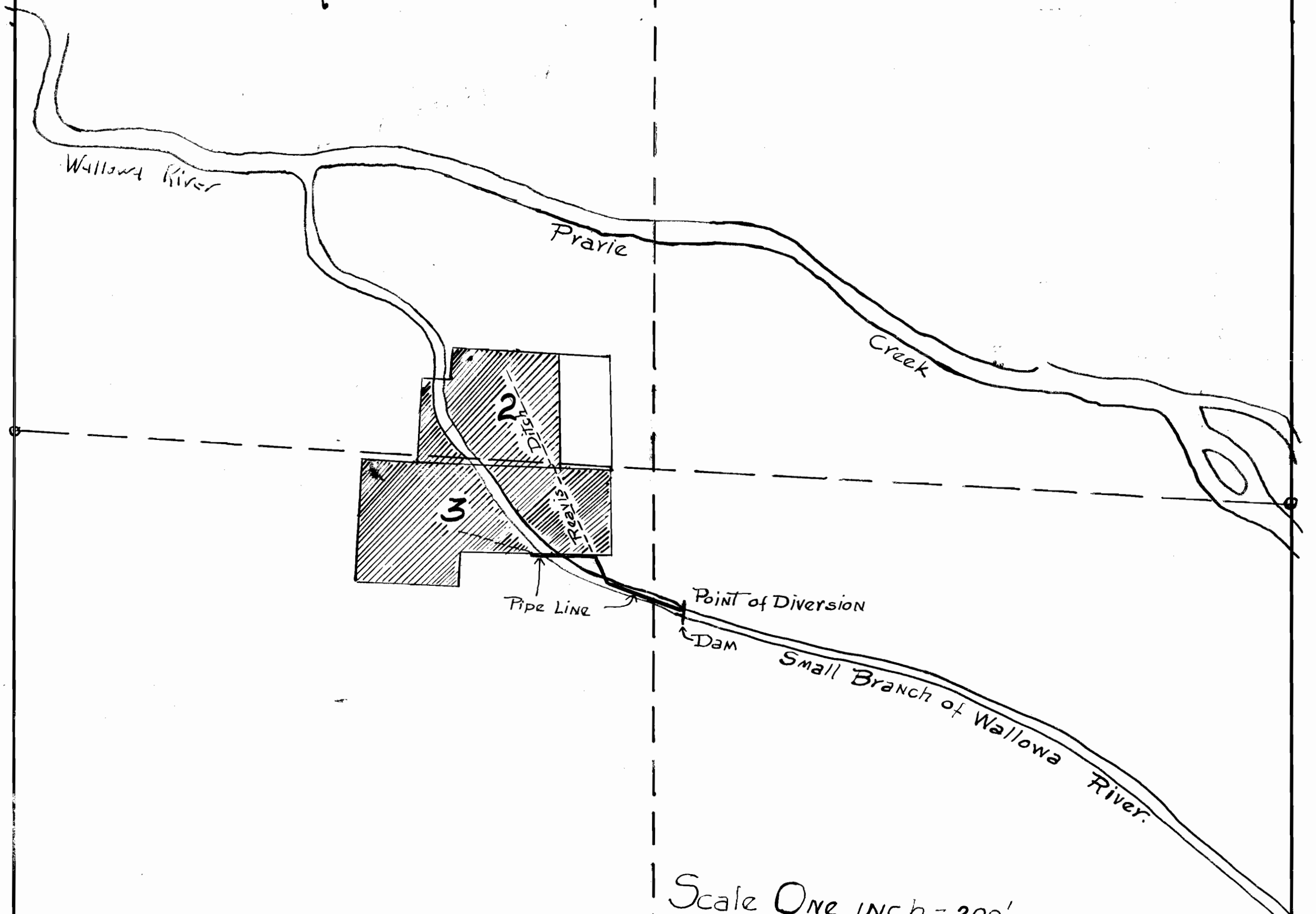


N.E. CORNER Sec. 2 Tp. 2 S. Range 44 E.W.M. →

MAP

ACCOMPANYING APPLICATION OF ED E. THOMAS AND
C. REAVIS OF ENTERPRISE, OREGON, FOR A PERMIT TO
APPROPRIATE WATER.



Scale One inch = 200'

Application No. 17261

Permit No. 12973

Center of Section 2 Tp. 2 S. Range 44 E.W.M.

17261 OK

8-31