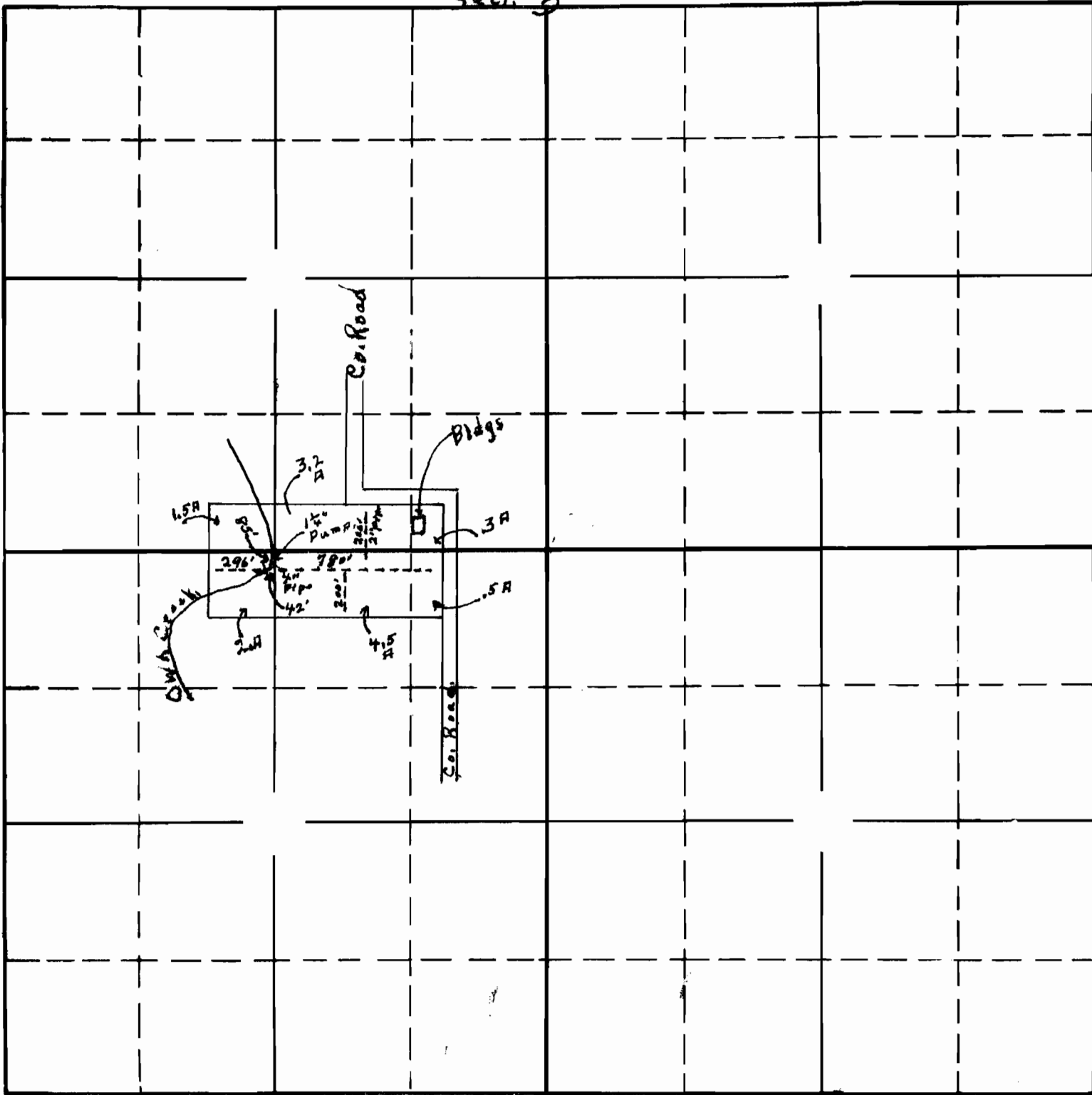


SECTION

915

TOWNSHIP 12 S, RANGE 4 W., W. M.

Section <sup>North</sup> 5



West

East

Section <sup>South</sup> 8

RECEIVED

APR 30 1938

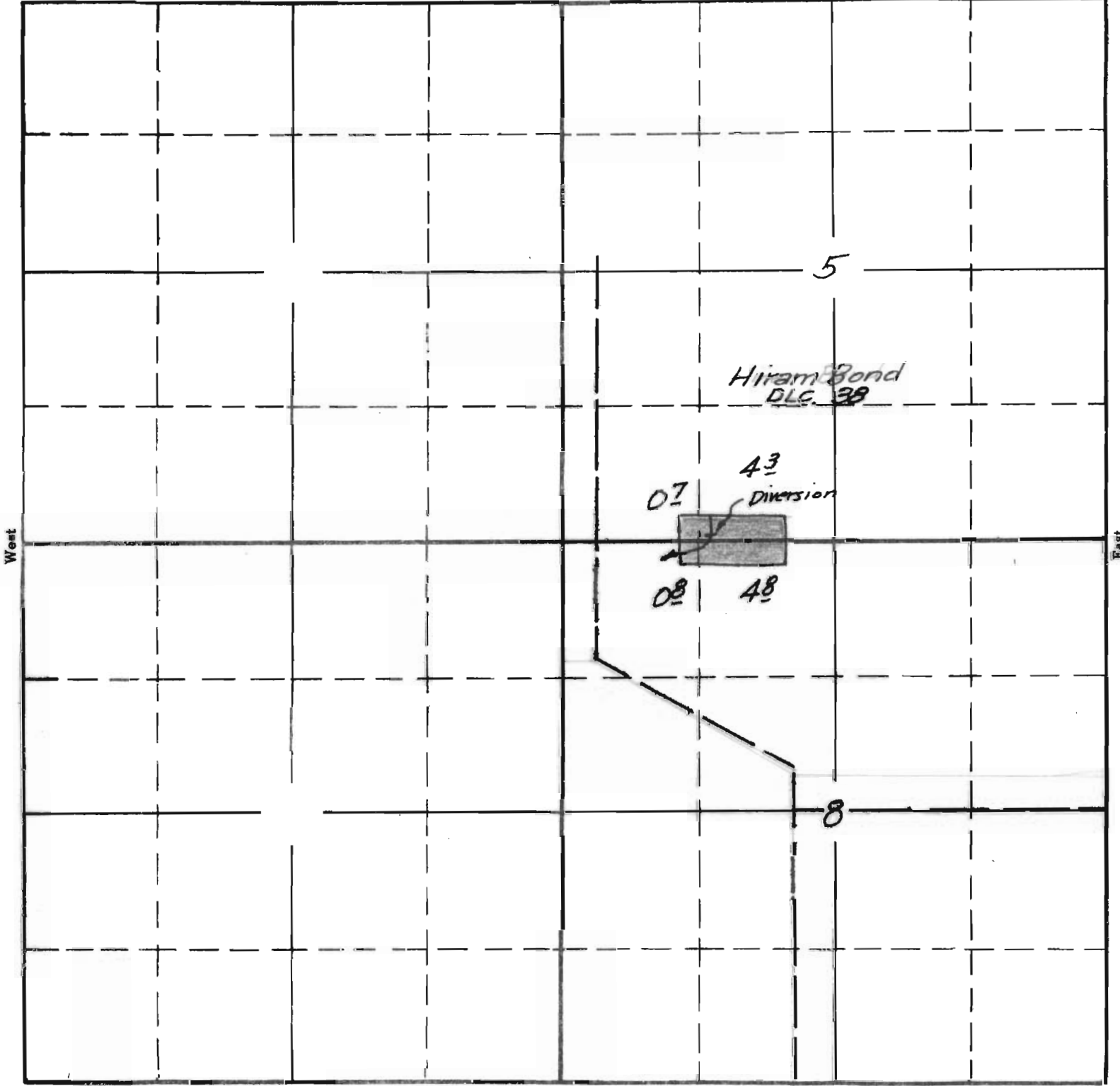
STATE ENGINEER  
SALEM, OREGON

APPLICATION No. 17308

PERMIT No. 13006

TOWNSHIP 125 , RANGE 4W , W. M.

North



West

East

South

Surveyed July 24 1940 C.A.C.

APPLICATION No. 17308

PERMIT No. 13006