

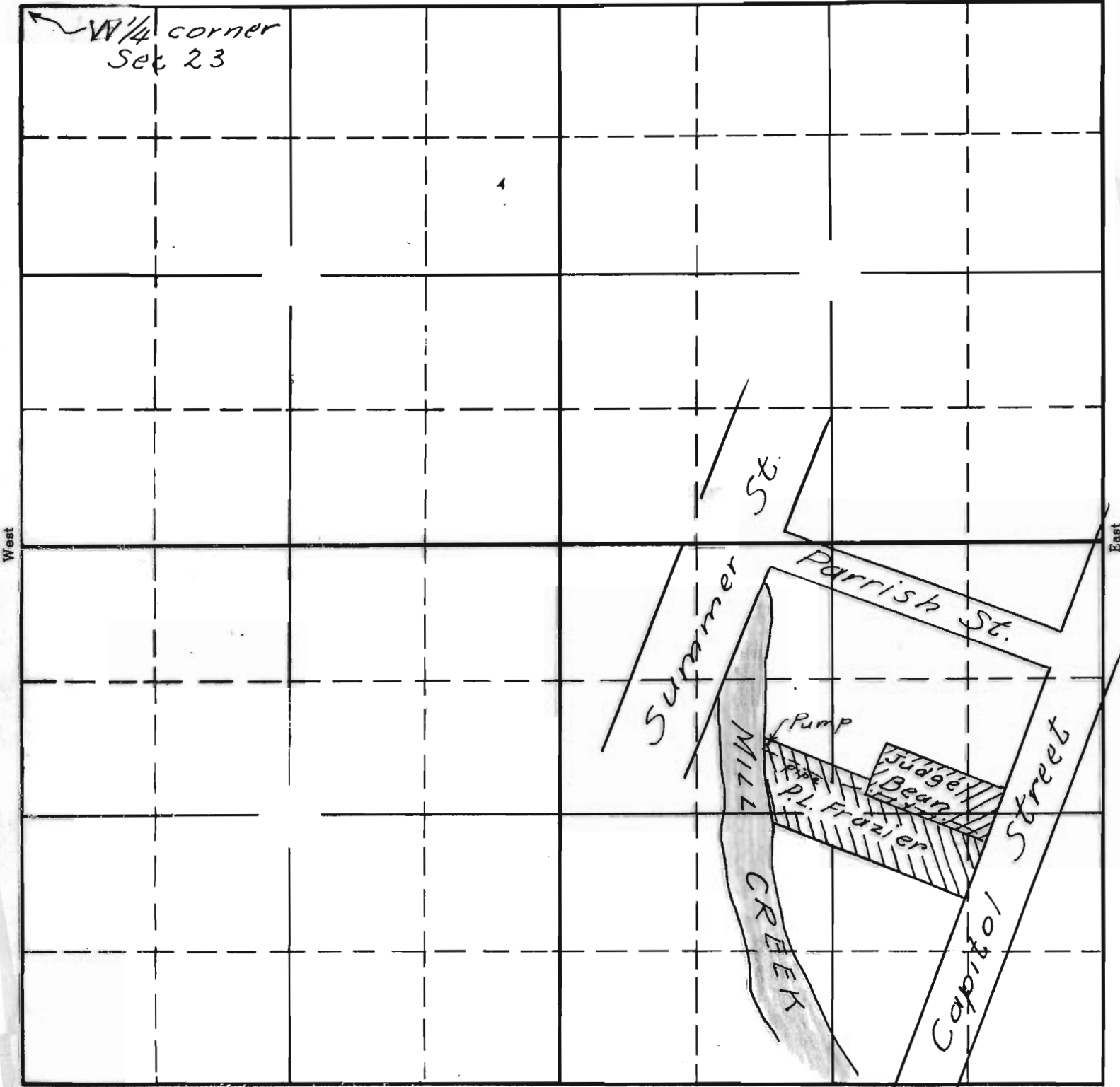
SECTION

NW 1/4 SW 1/4

Sec. 23

TOWNSHIP 7 S, RANGE 3 W, W. M.

North



West

East

South

Sketched in office of State
 Engineer from Highway "400"
 map and data furnished
 by applicant. 5/26/1938.

17354 OK
 2-76d

APPLICATION No. 17354
 PERMIT No. 13063

Scale 1 in. = 165 ft.