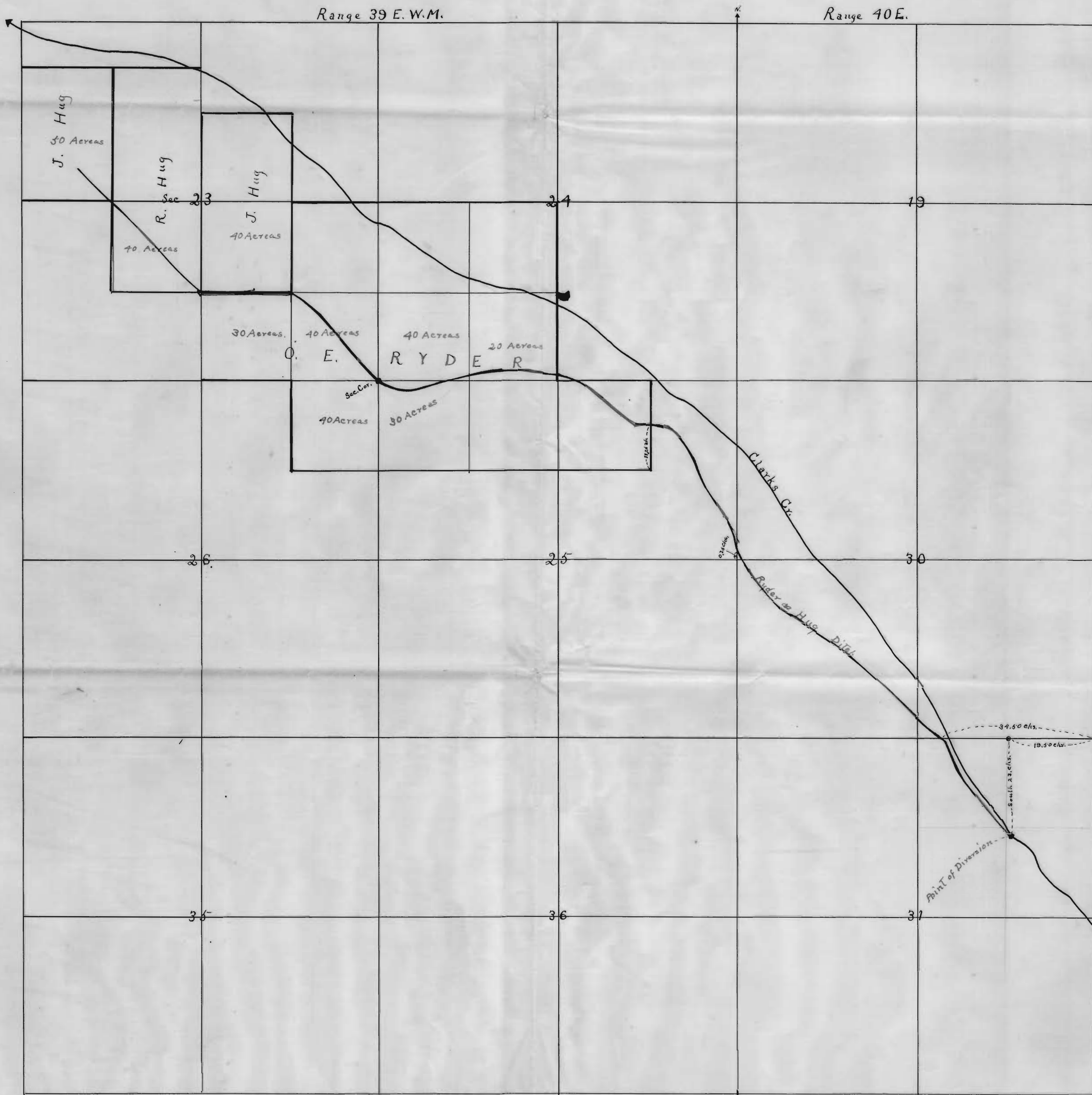


RYDER and HUG Ditch

Scale 1 inch = 1000 Ft.

TOWNSHIP 1 NORTH



State of Oregon }
County of Union } ss.

I Arthur Curtis of La Grande, Or. hereby certify that this map was made from notes taken during an actual survey made by me on July 10th 1909 and that it correctly represents the works described in the accompanying application together with the location of Streams and other ditches in the immediate vicinity

Arthur Curtis

Application # 214, Surveyor
Permit # 132.