

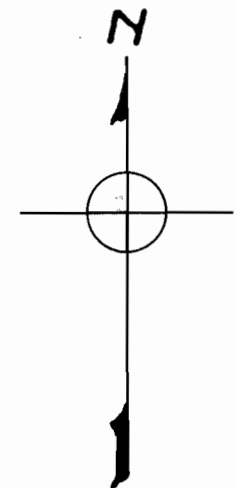
TWP 36 S, R2W
East 793°

MAP
Accompanying application of Geo. H. Wyckoff
of Portland, Oregon, for permit to the use of
the waters of Rogue River, Jackson County
Oregon, for the purpose of irrigation.

July 8, 1938

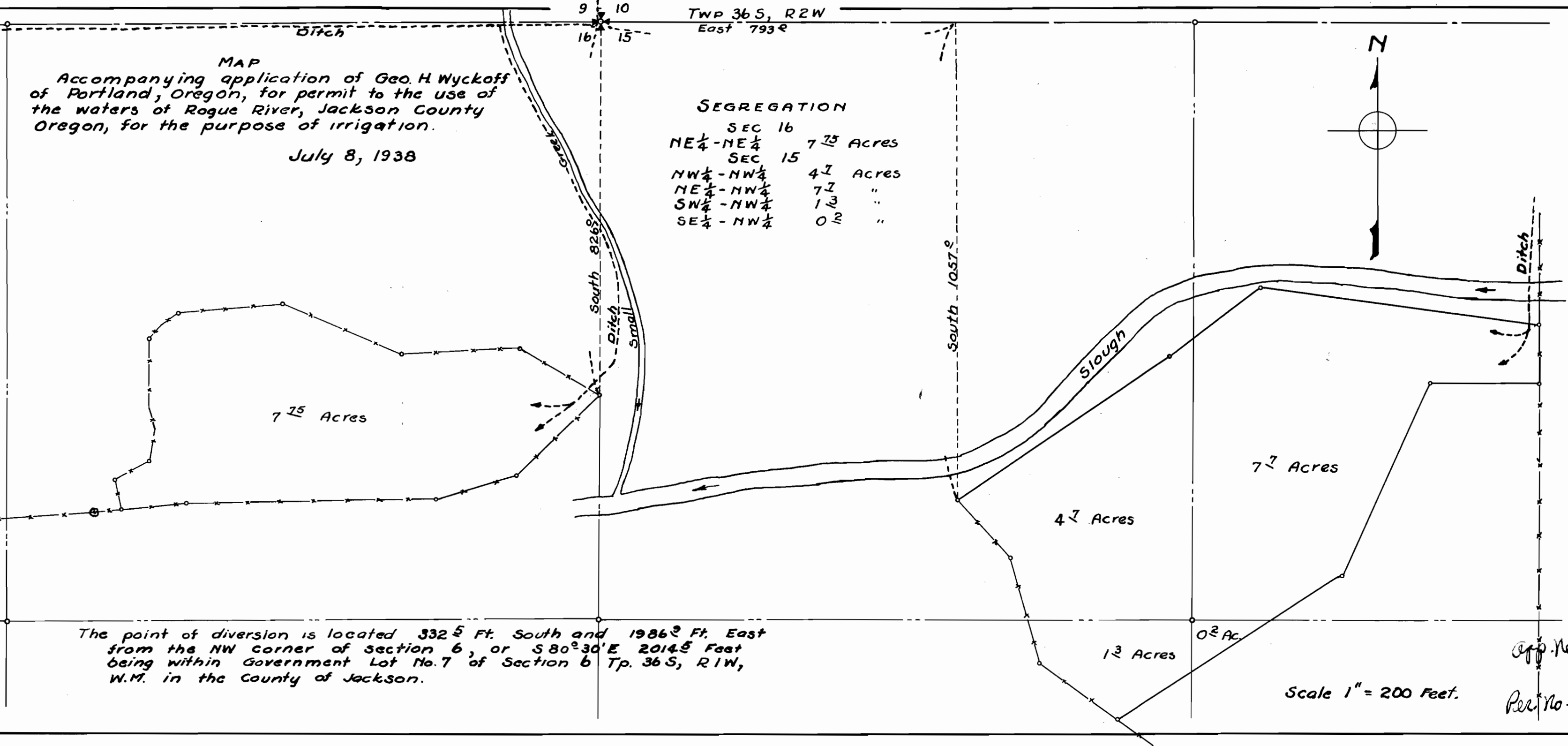
SEGREGATION

SEC 16	
NE 1/4 - NE 1/4	7 7/8 Acres
SEC 15	
NW 1/4 - NW 1/4	4 1/2 Acres
NE 1/4 - NW 1/4	7 1/2 "
SW 1/4 - NW 1/4	1 1/3 "
SE 1/4 - NW 1/4	0 1/2 "



Map made from notes of actual survey correctly
showing the lands to be irrigated together with
the streams and ditches in the immediate
vicinity

Surveyed by C. Z. Boyden
April - 1938



The point of diversion is located 332 1/2 Ft. South and 1986 1/2 Ft. East
from the NW corner of section 6, or S 80° 30' E 2014 1/2 Feet
being within Government Lot No. 7 of Section 6 Tp. 36 S, R1W,
W.M. in the County of Jackson.

Scale 1" = 200 Feet.

App. No. 17623
Per. No.